

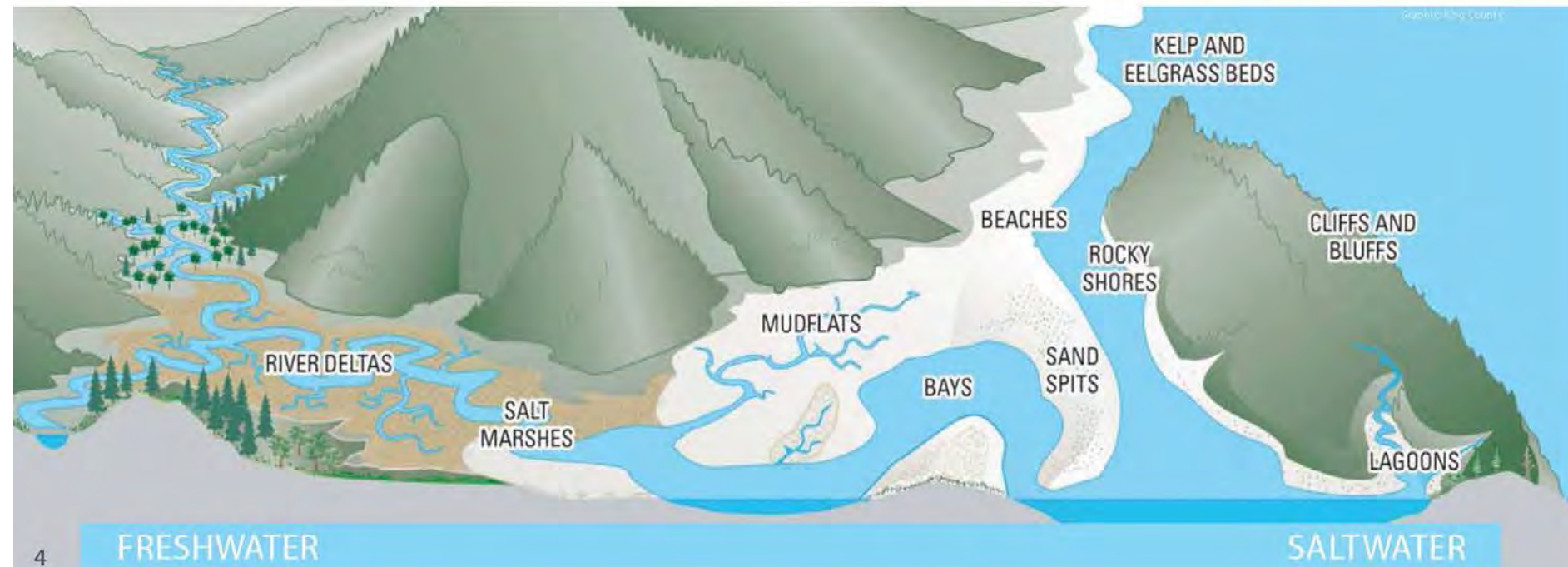
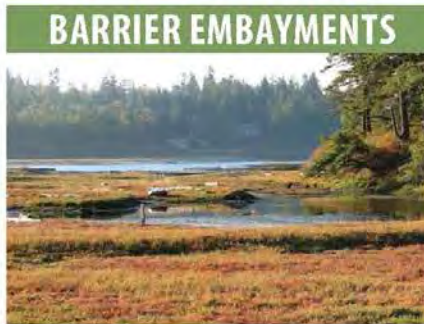
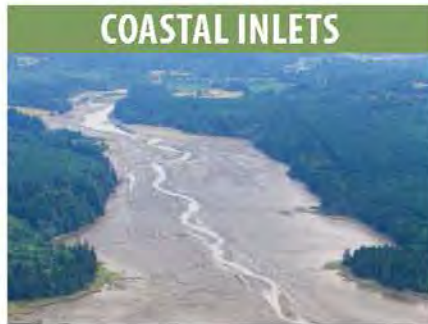
Estuary and Salmon Restoration Program



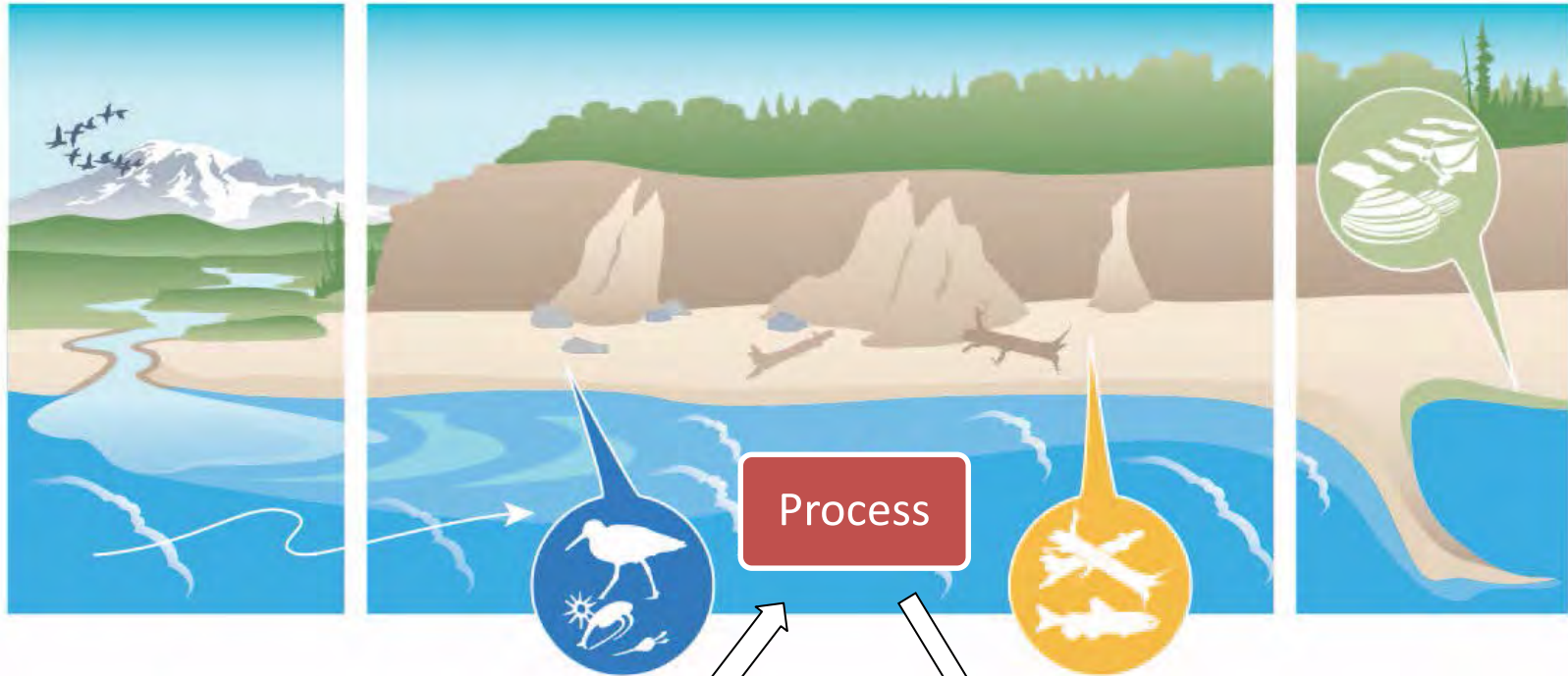
Jay Krienitz
WDFW | ESRP Manager



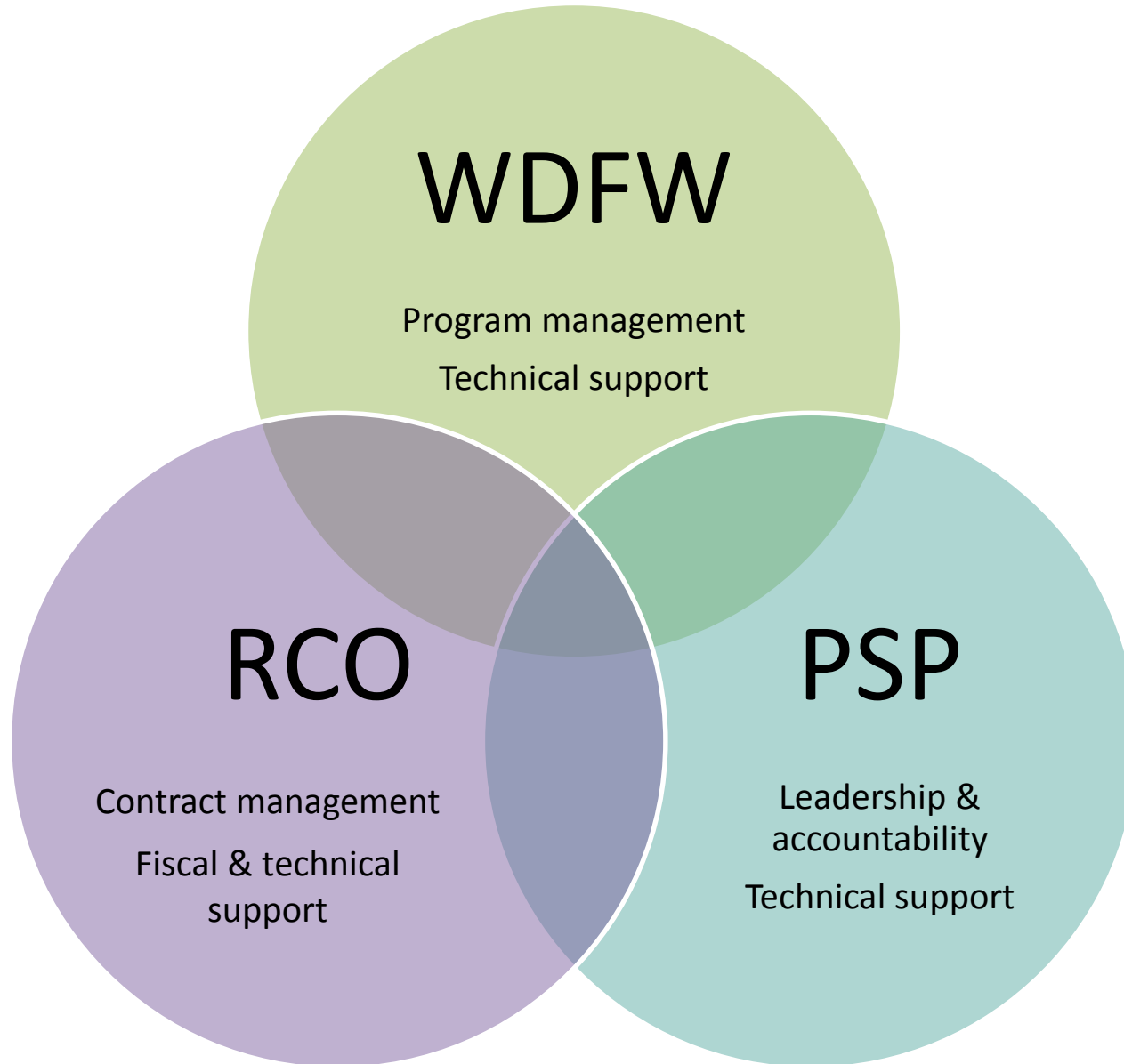
The nearshore is essential for ecosystem function



Restoring Natural Processes



Managing Partners



Program Funding to Date

Competitive Funds

2006 Supplemental Capital Appropriation	\$2,500,000
2007-2009 Capital Appropriation	\$12,000,000
2009-2011 Capital Appropriation	\$7,000,000
2011-2013 Capital Appropriation	\$5,000,000
2013-2015 Capital Appropriation	\$10,000,000
2015-2017 Capital Appropriation	\$8,000,000
TOTAL	\$44.5 million to date

Federal Partnerships

2007-2009 NOAA Partnership	\$1,115,000
2010-11 FFY EPA Marine & Nearshore	\$1,358,000
EPA federal partnership funds	\$3,800,000
TOTAL	~\$6.3 million to date

Project Awards

Award range	\$50,000 - \$2,600,000
Average project request	\$300,000 - \$400,000
Number funded projects	88 projects

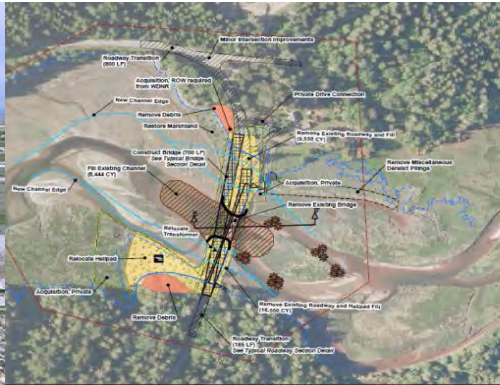
Eligibility

Eligible Project Actions:

Acquisition



Feasibility & Design



Construction



Adaptive Management



Eligible Applicants:

- Federal, State, & Local agencies
- Native American tribes
- Non-governmental entities
- Private or public corporations

Restoration objectives

1. Restore connectivity and size of large river deltas
2. Restore sediment input, transport and accretion processes
3. Restore shoreline complexity and length
4. Enhance landscape diversity and connectivity



Learning objective

Increase understanding of local systems to improve project outcomes and innovate solutions so ecosystem functions can be restored



Snohomish County Beach Nourishment



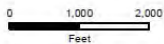
Snohomish County
 PUBLIC WORKS
 SURFACE WATER MANAGEMENT
 (425) 388-3454

Snohomish County disclaims any warranty of merchantability or warranty of fitness of this map for any particular purpose, either express or implied. No representation or warranty is made concerning the accuracy, currency, completeness or quality of data depicted on this map. Any user of this map assumes all responsibility for use thereof, and further agrees to hold Snohomish County harmless from and against any damage, loss, or liability arising from any use of this map.

**Nearshore Beach Nourishment
 Figure 1**



09/18/2012



Grant Cycle Overview

ESRP identifies funding opportunity (March)

In person and web-based workshops to describe ESRP process

Sponsors submit short pre-proposals and host on-site visits if applicable (May)

Successful applicants invited to submit full proposal

Presentations by sponsors to technical evaluation team

Ranked project list and funding recommendations available

A final Investment Plan including a ranked project list and funding recommendations is developed (July 1)

Program Priorities

- Strengthening ESRP science program capacity
- Evolving ESRP to meet emerging needs and best practices
- Supporting outreach and communications needs
- Supporting PSNERP
- Contributing to State Salmon/Water Quality Funds Program Coordination Project
- Investigating policy and program solutions... For example: enhancing multi-benefit project outcomes, supporting acquisition tools development (valuation, timeliness), new landowner incentive tools for restoration and protection projects

Engaging with MRC's

- ESRP and MRC's partner to identify and discuss priorities for nearshore:
 - Restoration projects
 - Multiple benefit project development (farms, fish, flood)
 - Innovation and investigations –Learning Program
- 2016 ESRP Grant Competition: Local discussions about priorities and site visits. New initiative to work with NWSF and MRC's on small projects, planning, and outreach?
- Outreach and engagement -How can ESRP partner with and support MRC's interests in nearshore ecosystem restoration that engages, informs, and involves?

For more information

Jay Krienitz, ESRP Manager -WDFW

jay.krienitz@dfw.wa.gov

(360) 902-2572

Mike Ramsey, ESRP/Salmon Project Manager- RCO

mike.ramsey@rco.wa.gov

(360) 902-2969

ESRP Nearshore Science Manager: Coming soon!

www.pugetsoundnearshore.org/esrp