



# NW Straits Commission 2017 Annual MRC Conference

November 4, 2017

*Captain John Veentjer, USCG Retired*  
*Executive Director, Puget Sound Marine Exchange*  
*11-4-2017*

**MARINE EXCHANGE**

**OF  
PUGET SOUND**



# Services we provide:

*The backbone of our existence*

- **Monitoring and tracking of deep draft vessels**
  - 24/7 Watch
  - Information on shipping activities in the Puget Sound and Grays Harbor
  - Daily shipping activity reports
  - Automatic Identification System
  - Statistical Reports
- **Manage the West Seattle Buoys**
- **Answering Services**
- **And much more ...**

*[www.marexps.com](http://www.marexps.com)*

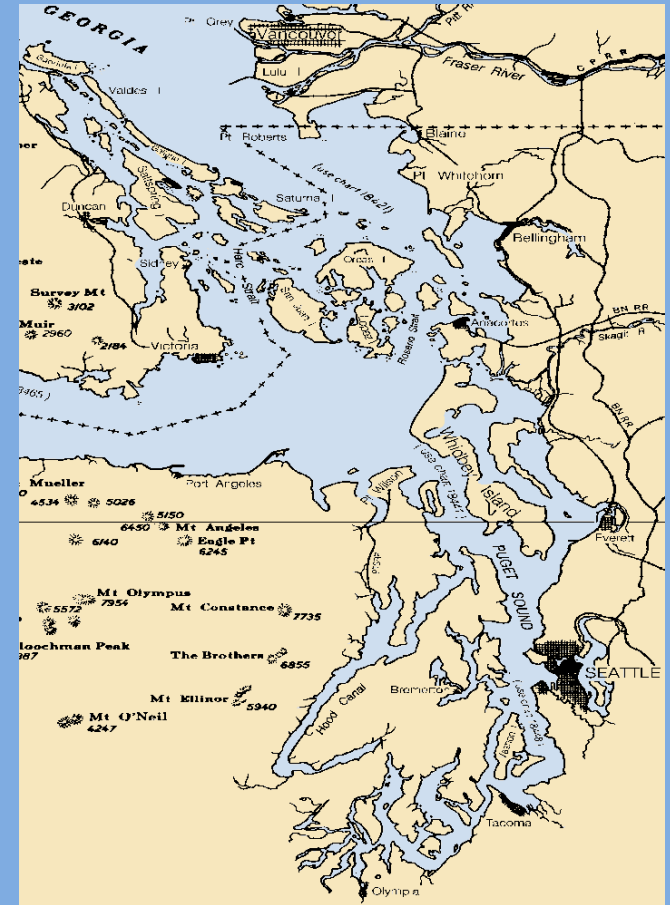


# Puget Sound Harbor Safety Committee

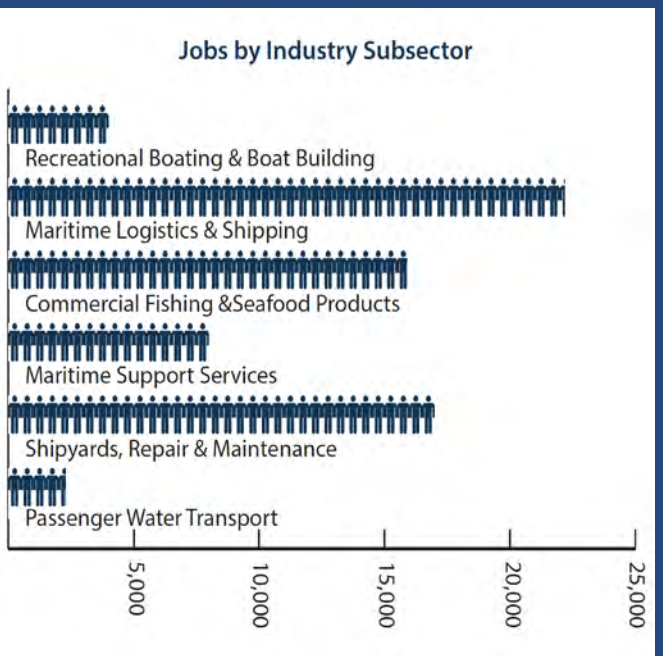
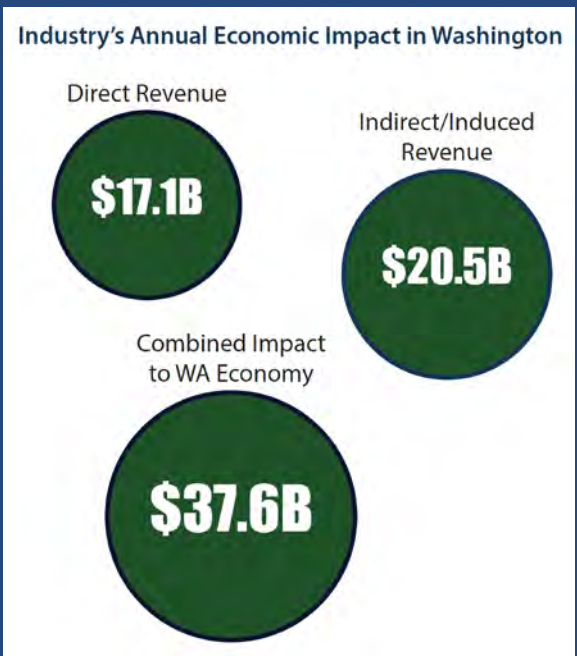
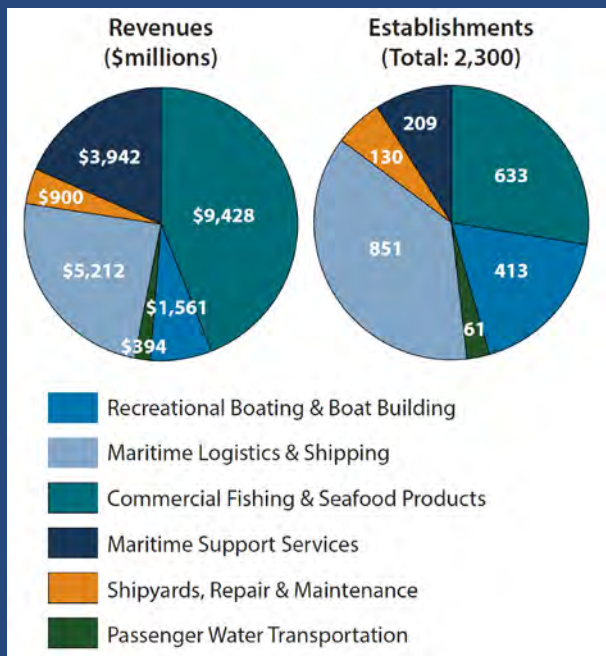
## “PARTNERSHIP FOR SUCCESS”

The informal organizational structure and mutual cooperation of its members have allowed HSC to become the ideal model for balancing the needs of various interests in the marine environment whether they are economic, environmental recreational, regulatory or national defense.

[www.pshsc.org](http://www.pshsc.org)



# Economic Impact



The maritime industry paid nearly **\$4.5 billion** in wages in 2015 with average salaries of **\$65,300**. In comparison, the state's average wage in 2015 was **\$56,700** (does not include benefits).

Industry-wide, revenues have grown **2.4%** per year from 2012 to 2015, with the largest growth rate in Maritime Logistics & Shipping at **5.2%**.

*2016 Economic Impact Study, Community Attributes*

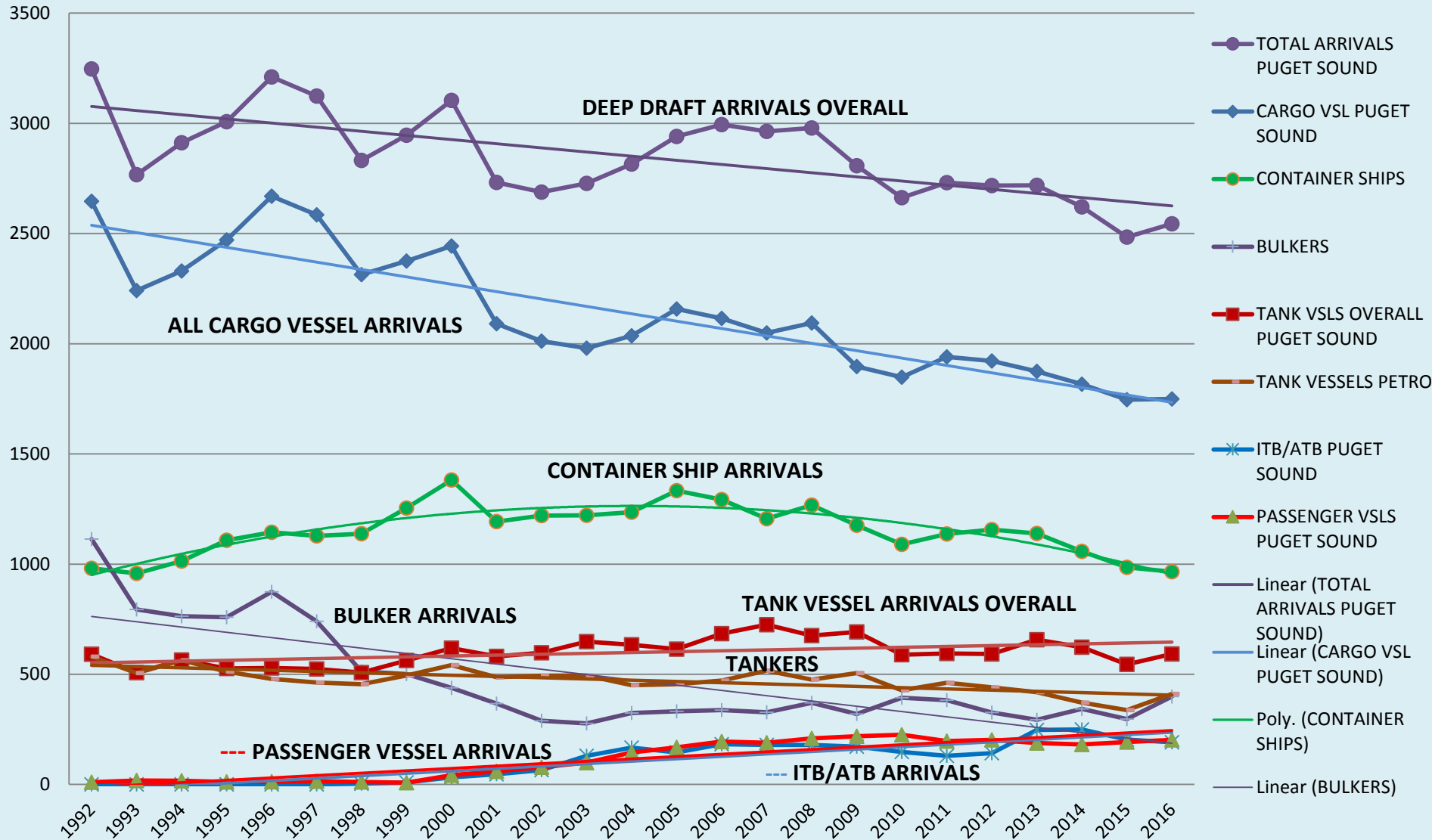


# Comprehensive Marine Safety System

- International, Federal & Other Standards
- Vessel Traffic System - Deep, Wide Waterways, and a **Cooperative VTS Management between US/Canada**
- Monitoring, Inspections, Enforcement
- Port State Control – Eliminate Substandard Vessels
- Tug Escort, Tug Assist, Pilots
- Double Hulls for Tankers & Cargo Vessel Fuel Tanks
- Enhanced Navigation & Crew Competency
- Harbor Safety Plan – Standards of Care
- And much more....

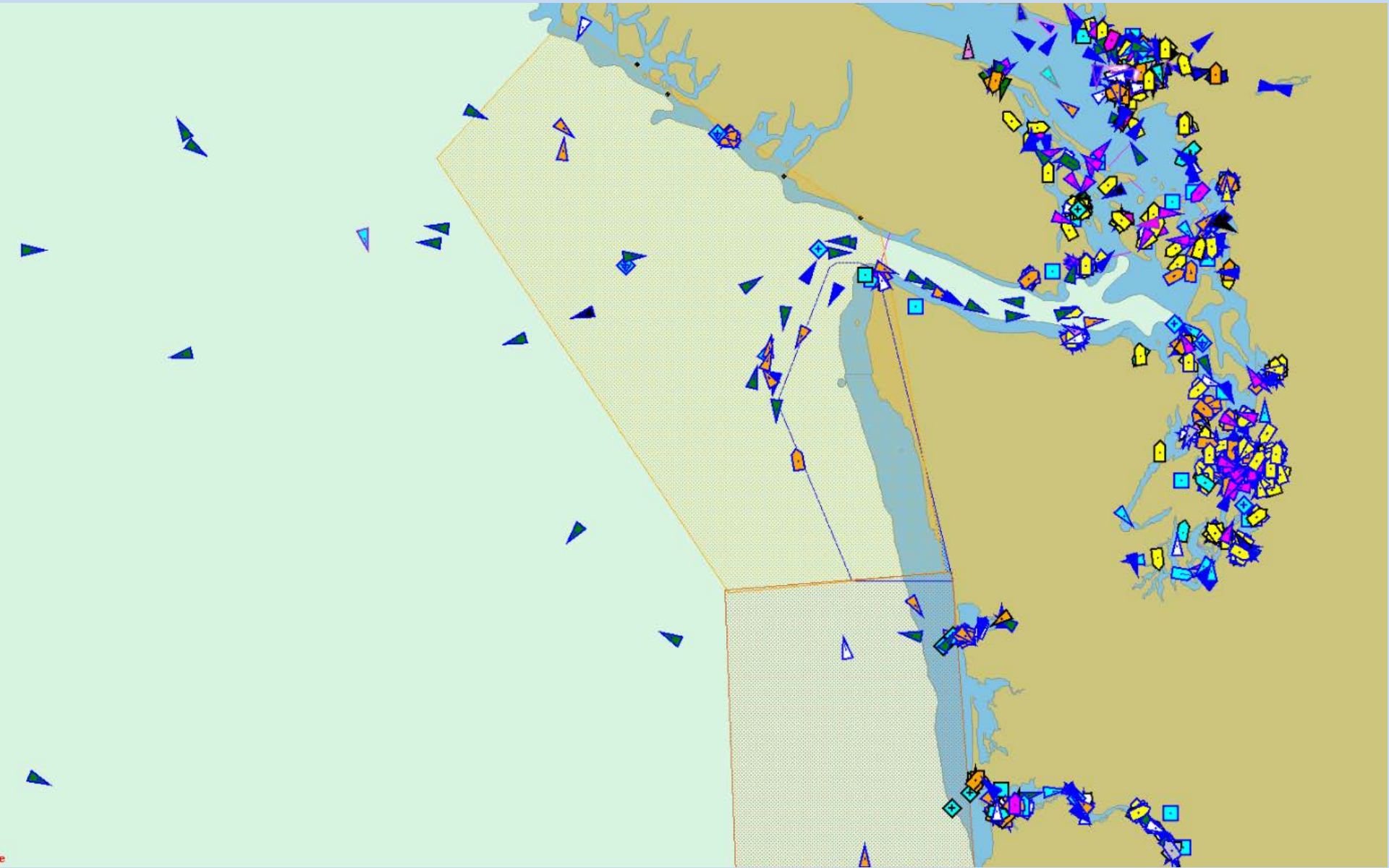
# DEEP DRAFT ARRIVALS TO U.S. PORTS OF PUGET SOUND

## 1992 thru 2016



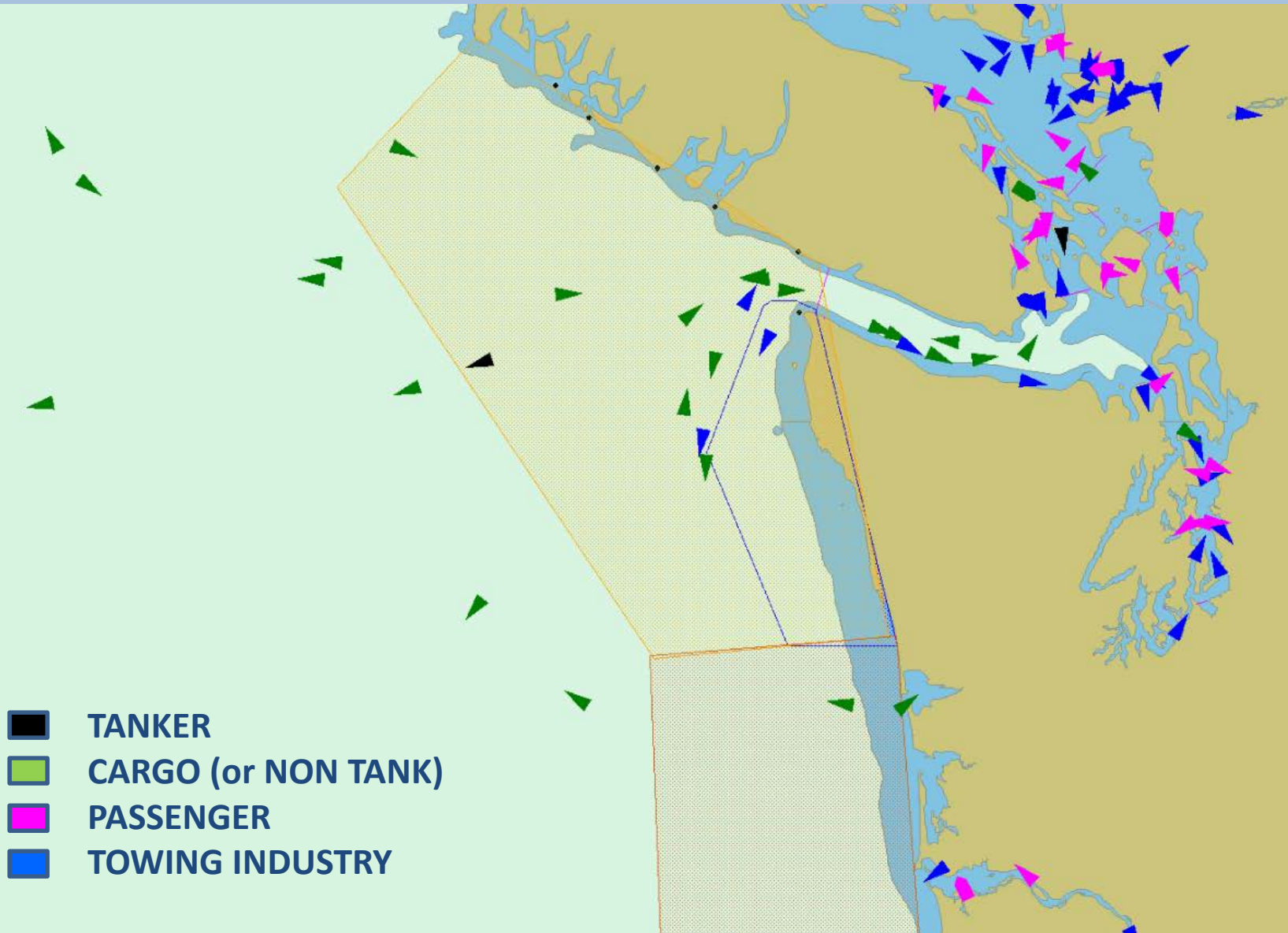
# AIS SNAP SHOT OF PACIFIC NORTHWEST TRAFFIC

Tuesday, October 31, 2017

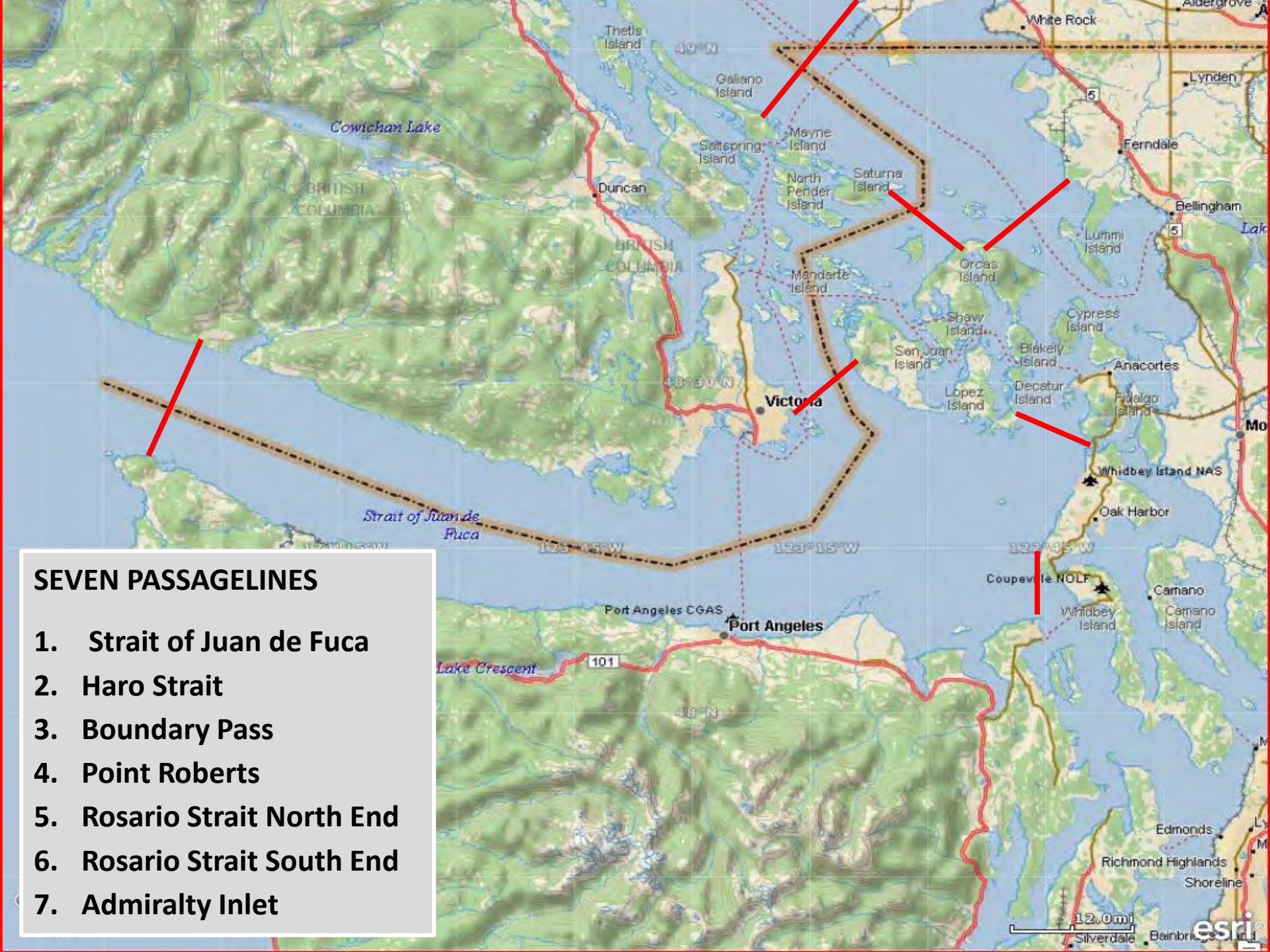


# AIS SNAP SHOT OF UNDERWAY VESSEL TRAFFIC

Tuesday, October 31, 2017

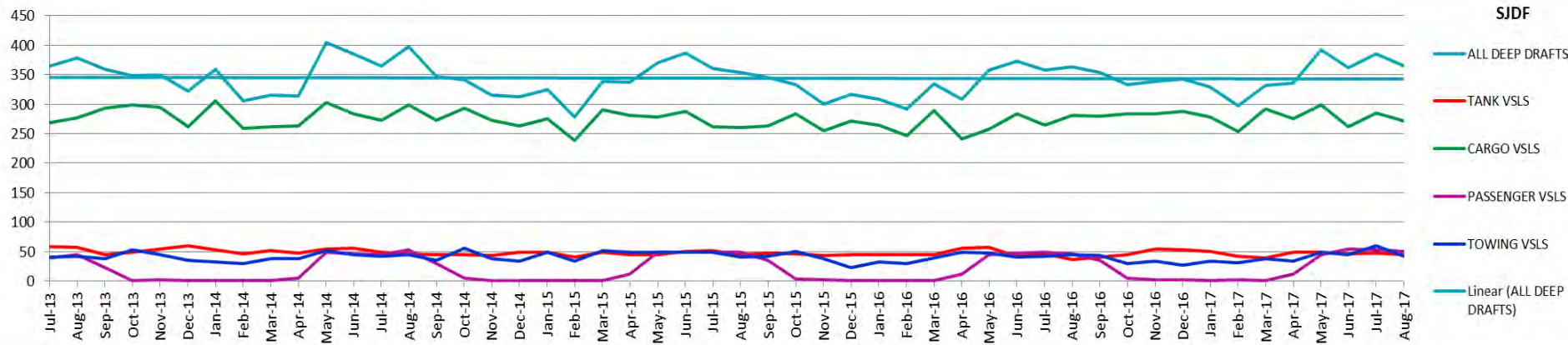


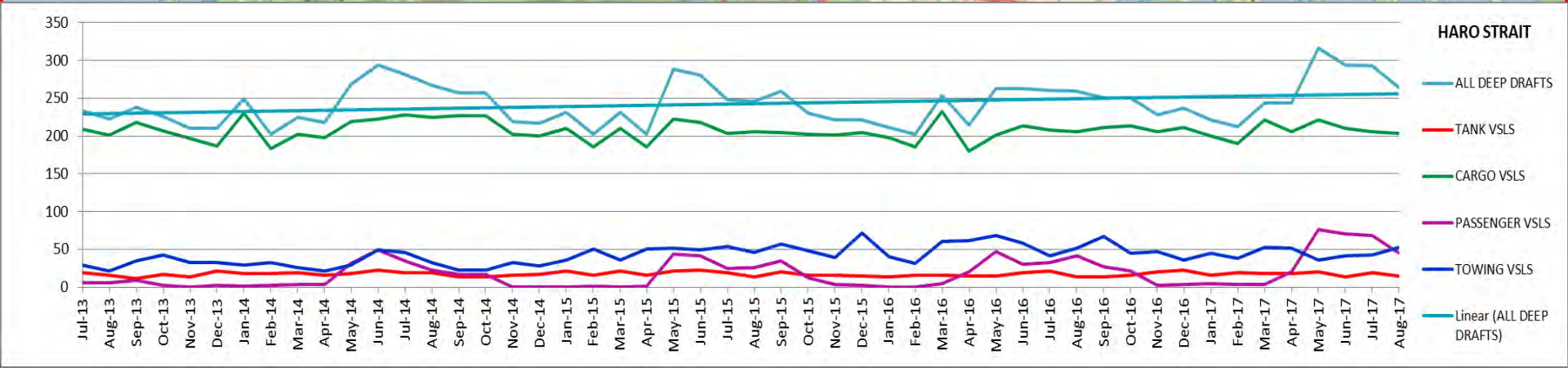
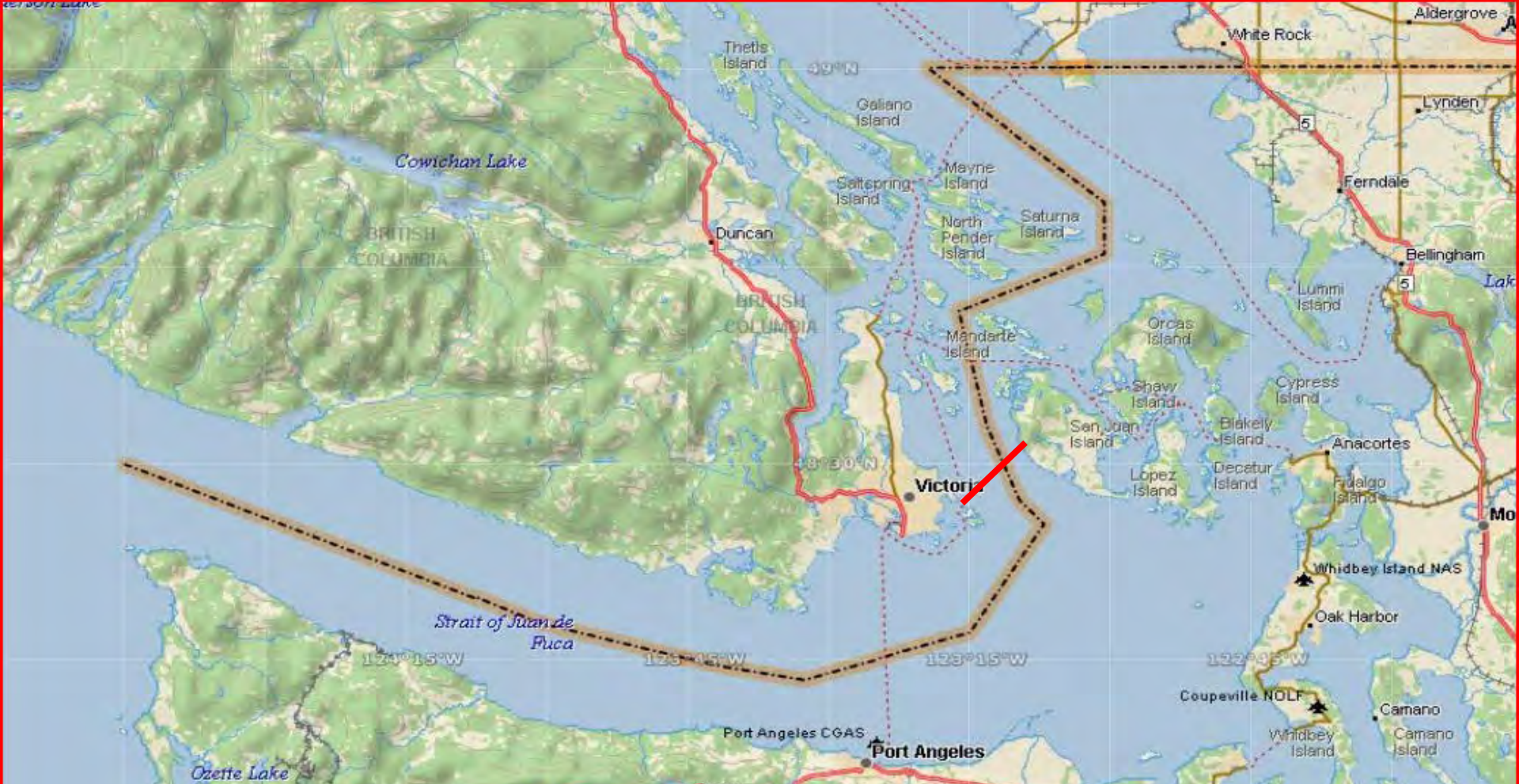


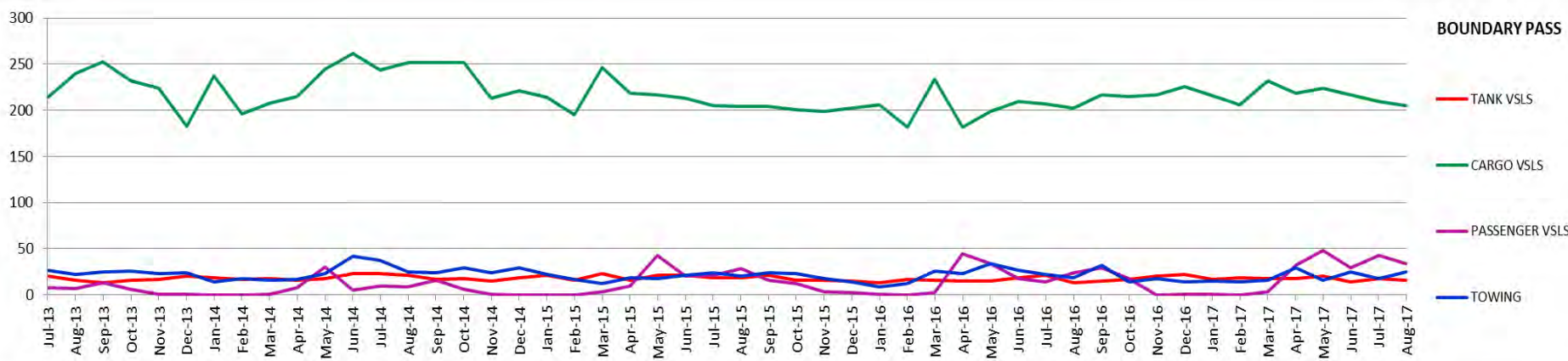
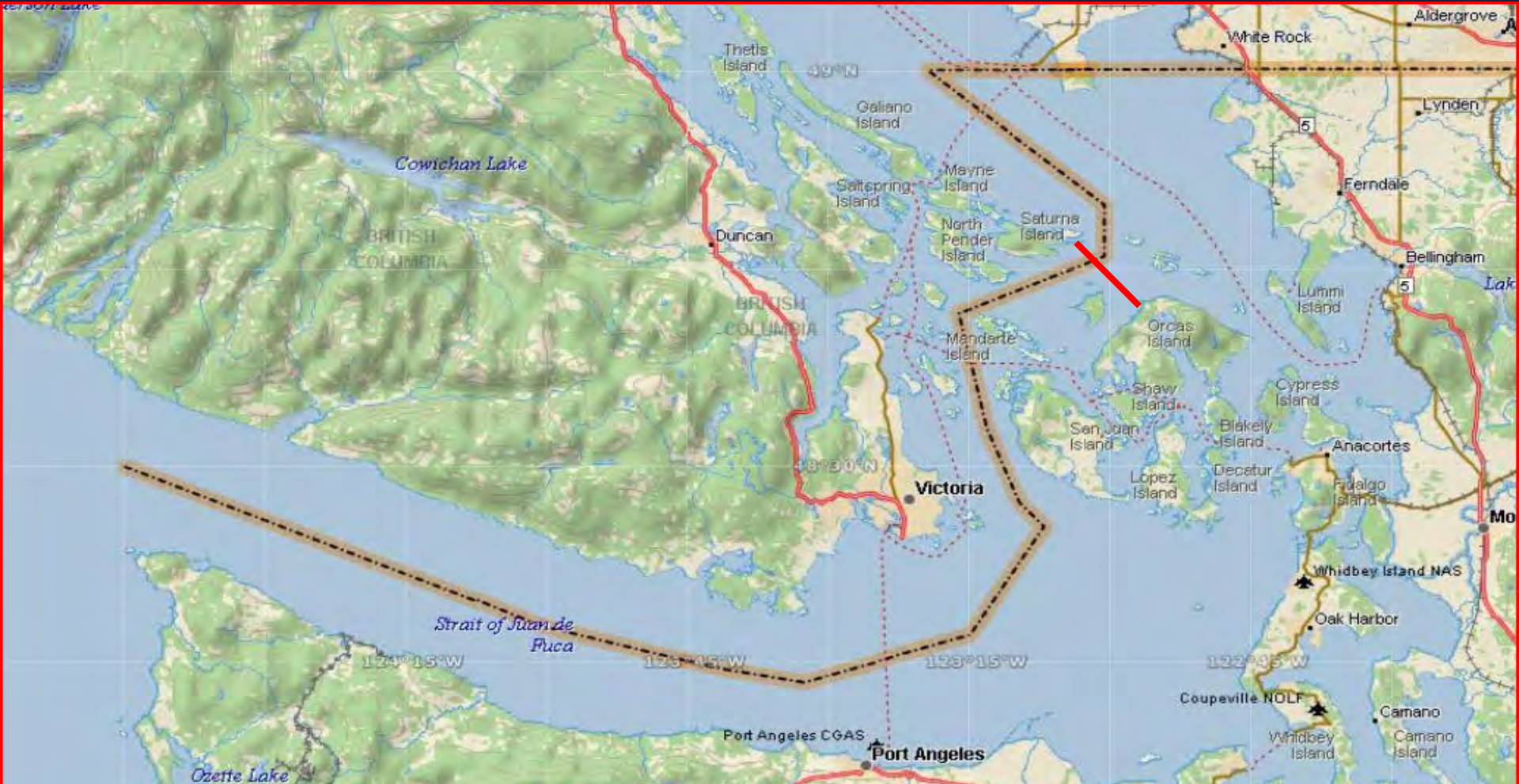


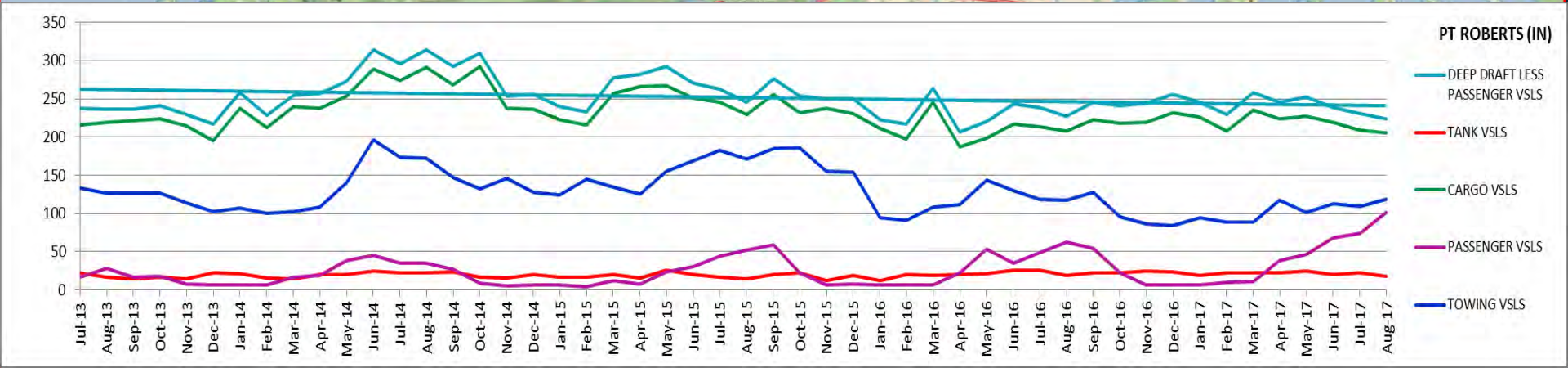
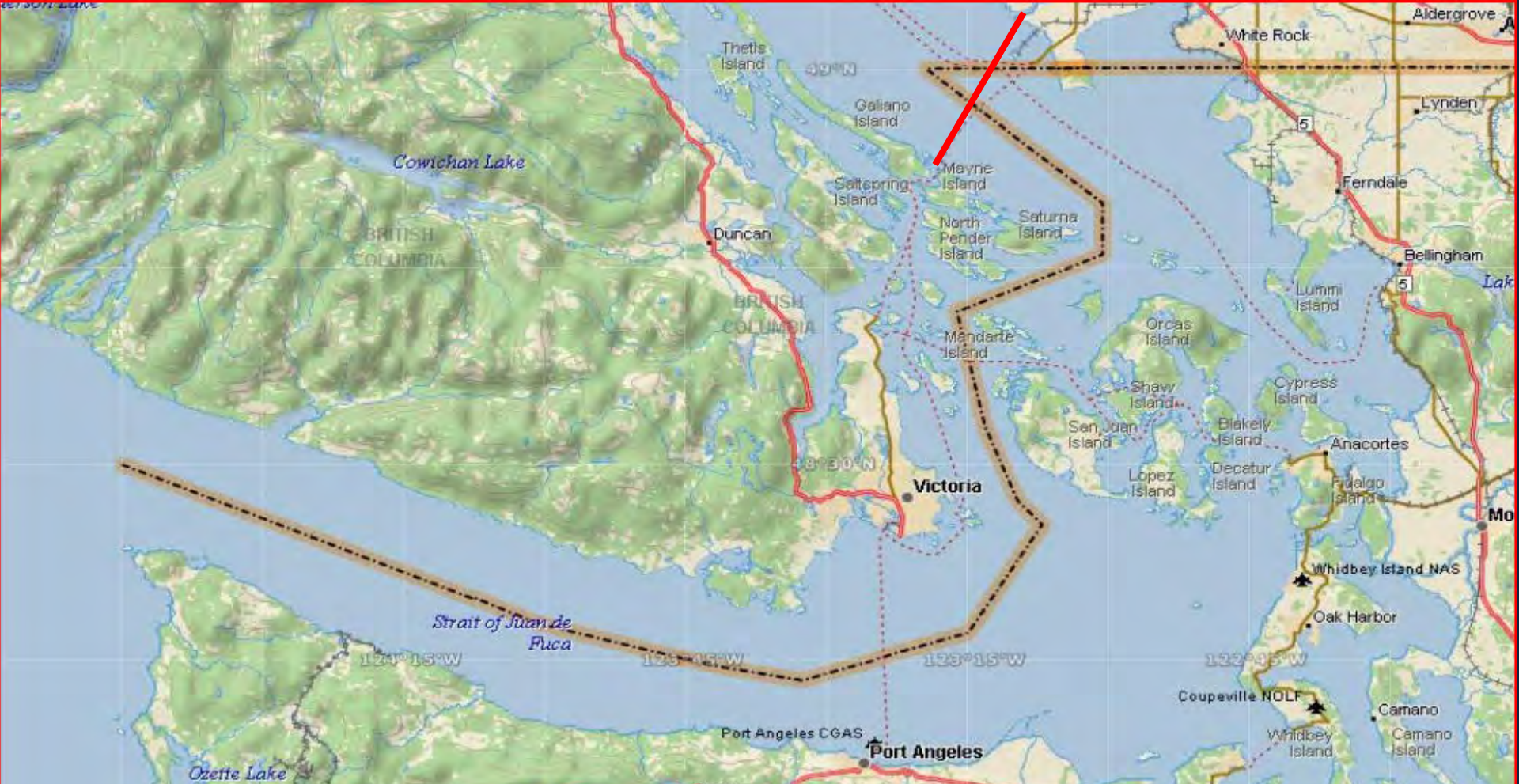
## SEVEN PASSAGELINES

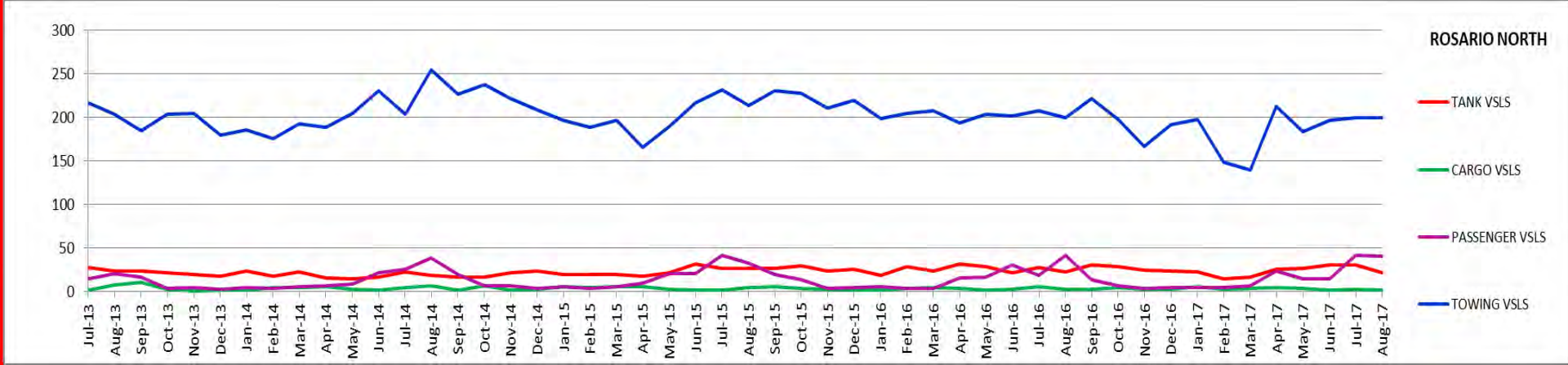
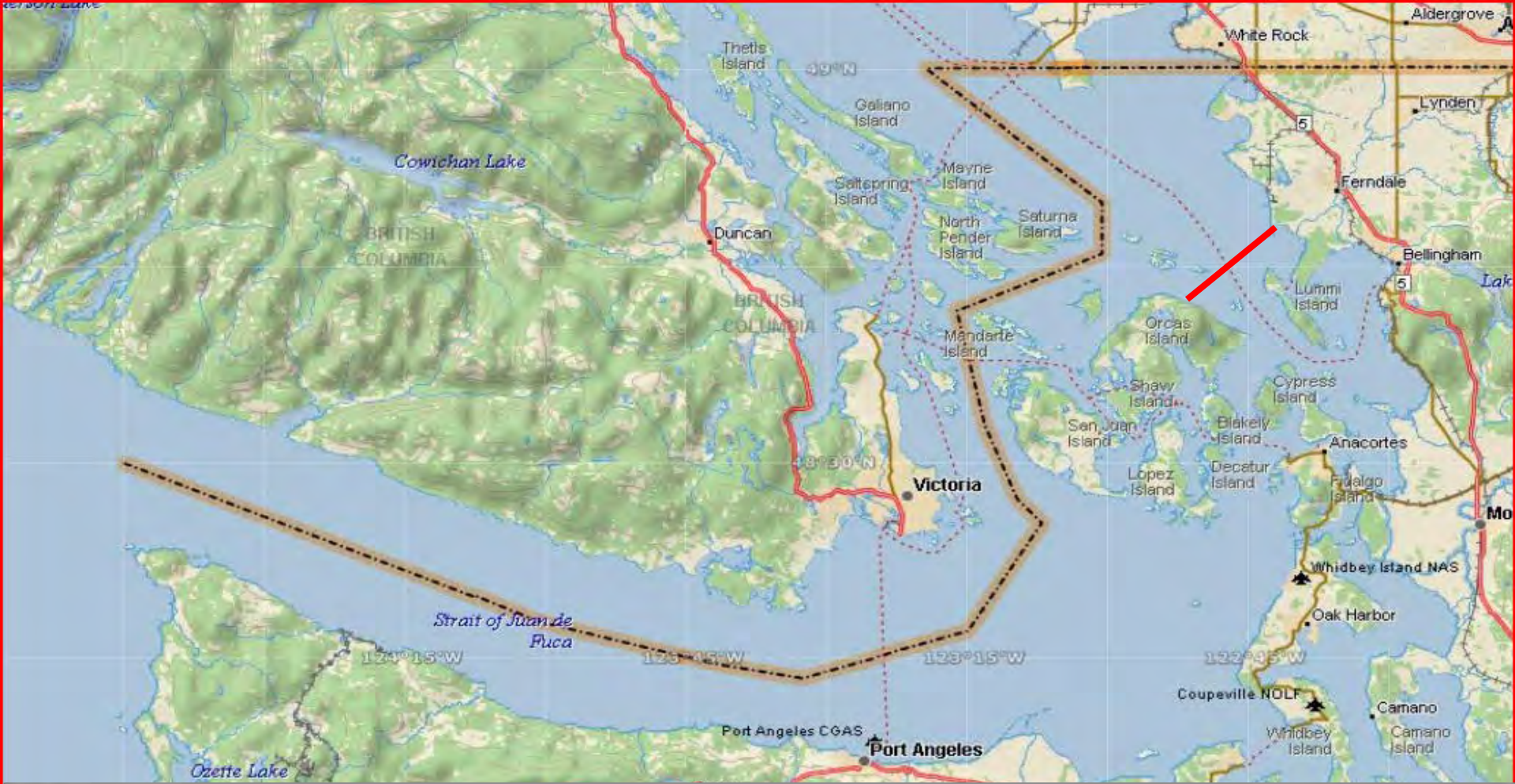
1. Strait of Juan de Fuca
2. Haro Strait
3. Boundary Pass
4. Point Roberts
5. Rosario Strait North End
6. Rosario Strait South End
7. Admiralty Inlet

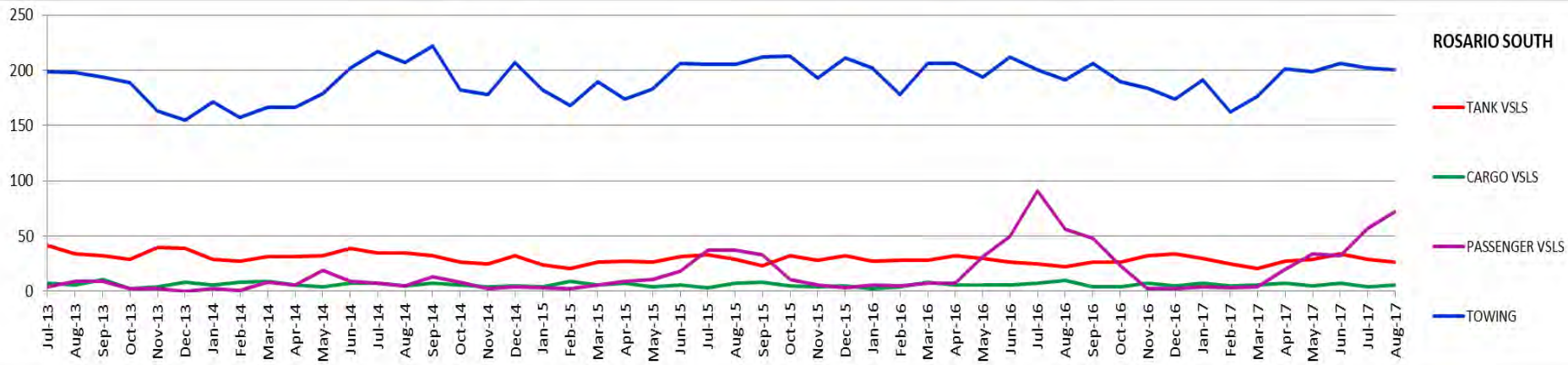


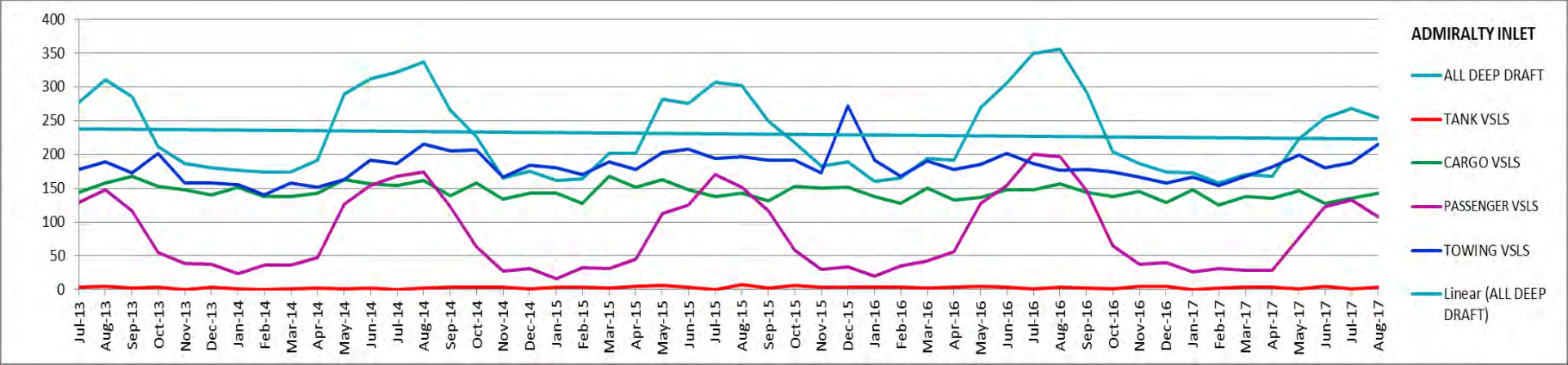














# Vessel Traffic Risk/Safety Assessments



**Besides the individual traffic assessment conducted by project applicants, we have conducted:**

- **Vessel Traffic Risk Assessments by GWU & VCU**
  - 2005 – BP funded
  - 2010 – Puget Sound Partnership funded with EPA grant
  - 2015 – Department of Ecology funded
- **Salish Sea Workshop in 2015 and 2016 by ECY**
- **Ports and Waterways Safety Assessment by the USCG**



**PUGET SOUND  
HARBOR SAFETY  
COMMITTEE**

**MARINE EXCHANGE**

**OF**

**PUGET SOUND**



# QUESTIONS

*Captain John Veentjer, USCG Retired*  
*Executive Director, Puget Sound Marine Exchange*  
*5-12-15*



## Whale Alert

*Reducing lethal whale ship-strikes worldwide.*

Whale Alert is a growing network of non-profit institutions, government agencies, shipping and technology companies focused on reducing lethal ship strikes of whales.

**You can help too!**

