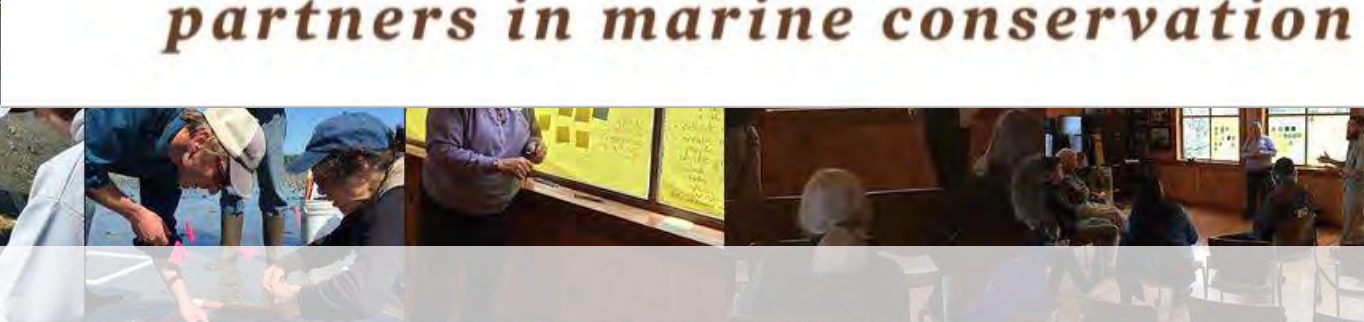




Northwest Straits

INITIATIVE

partners in marine conservation



Twitter: @nwstraits

Facebook: @nwstraits

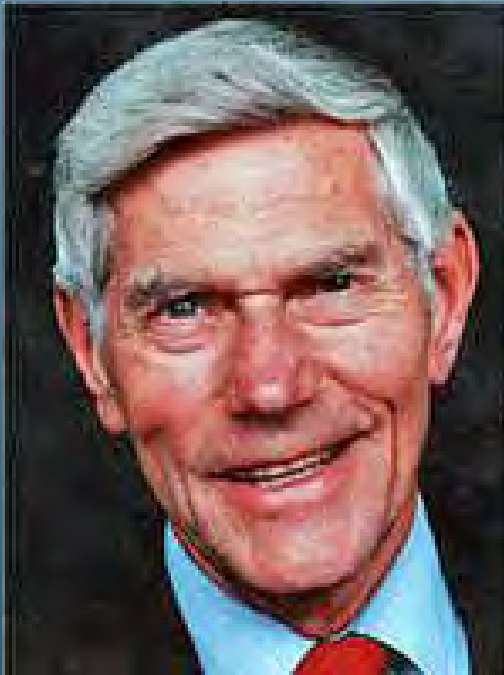
Instagram: @nwstraits

Sanctuary idea...not very popular locally.



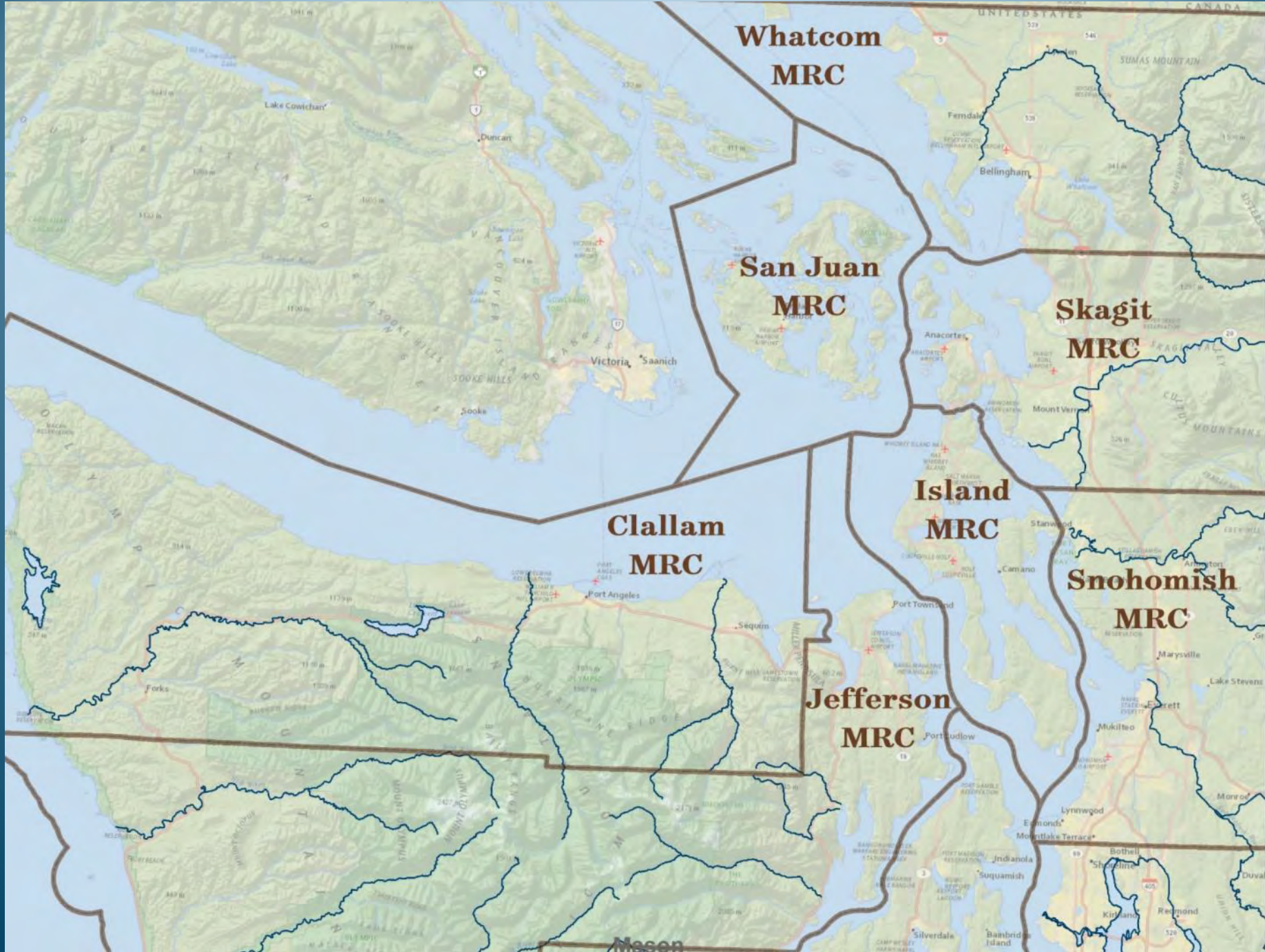
History of the Northwest Straits Initiative

- The Murray-Metcalf Commission
- Congressional Authorization
- Bottom-up approach
- Modeled after San Juan MRC



Created to...

Protect and restore marine waters, species and habitats of the Northwest Straits to achieve ecosystem health and sustainable resource use through a **citizen-based approach.**



Northwest Straits Commission - 2017



A board of directors for the organization.

Northwest Straits Commission Staff 2017





- Provides base funding for MRCs
- Regional focus and strategic plan
- Data storage and sharing/ bibliography and Sound IQ
- Training and coordination among MRCs
- Integrates work with other regional programs

Northwest Straits Foundation 2017



Governance of the organization, fundraising

Northwest Straits Foundation Staff 2017





partners in marine conservation

- Non-profit organization – solicit funding from public and private sources
- Leverages support for MRC projects supplemental to core (federal) support
- Manages state-wide derelict fishing gear removal program
- Manages large restoration projects

Northwest Straits Marine Conservation Initiative



Marine Resources
Committees



Whatcom • Clallam • Jefferson • Skagit • San Juan • Island • Snohomish

Initiative Funding

Federal

EPA funds

Project
funding

State

Project
funding

Biennial
appropriation

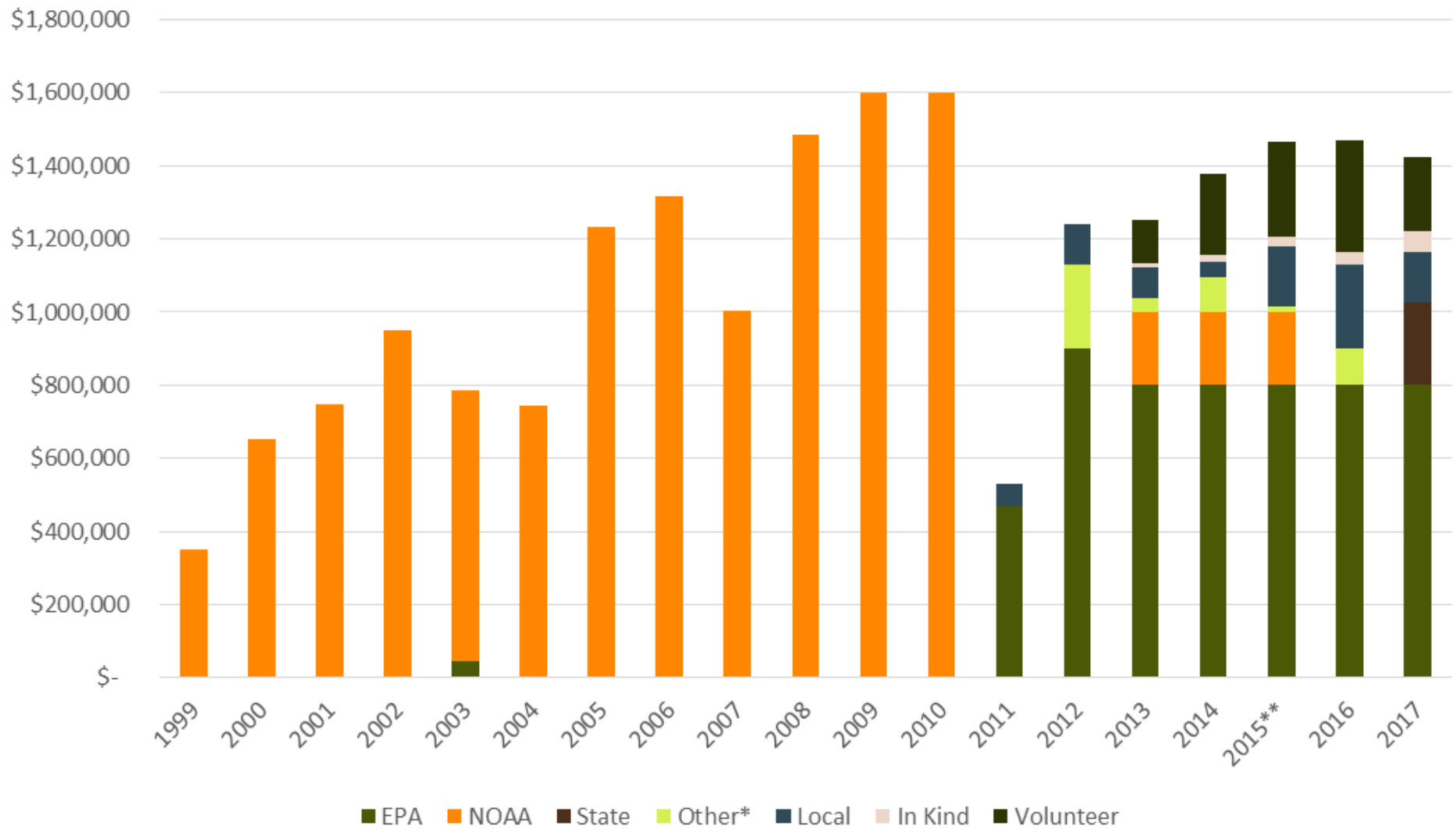
Other

Opportunity
fund

County
contributions

Grant
opportunities

Northwest Straits Commission funding





Northwest
Straits
Commission

Northwest
Straits
Commission

Northwest
Straits
Commission
COMMISSION DE BASSIN COASTIER PACIFIQUE







Home

I want to...



Welcome to SoundIQ!

What can I do with SoundIQ?

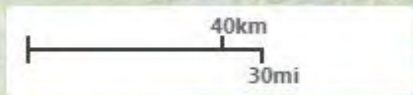
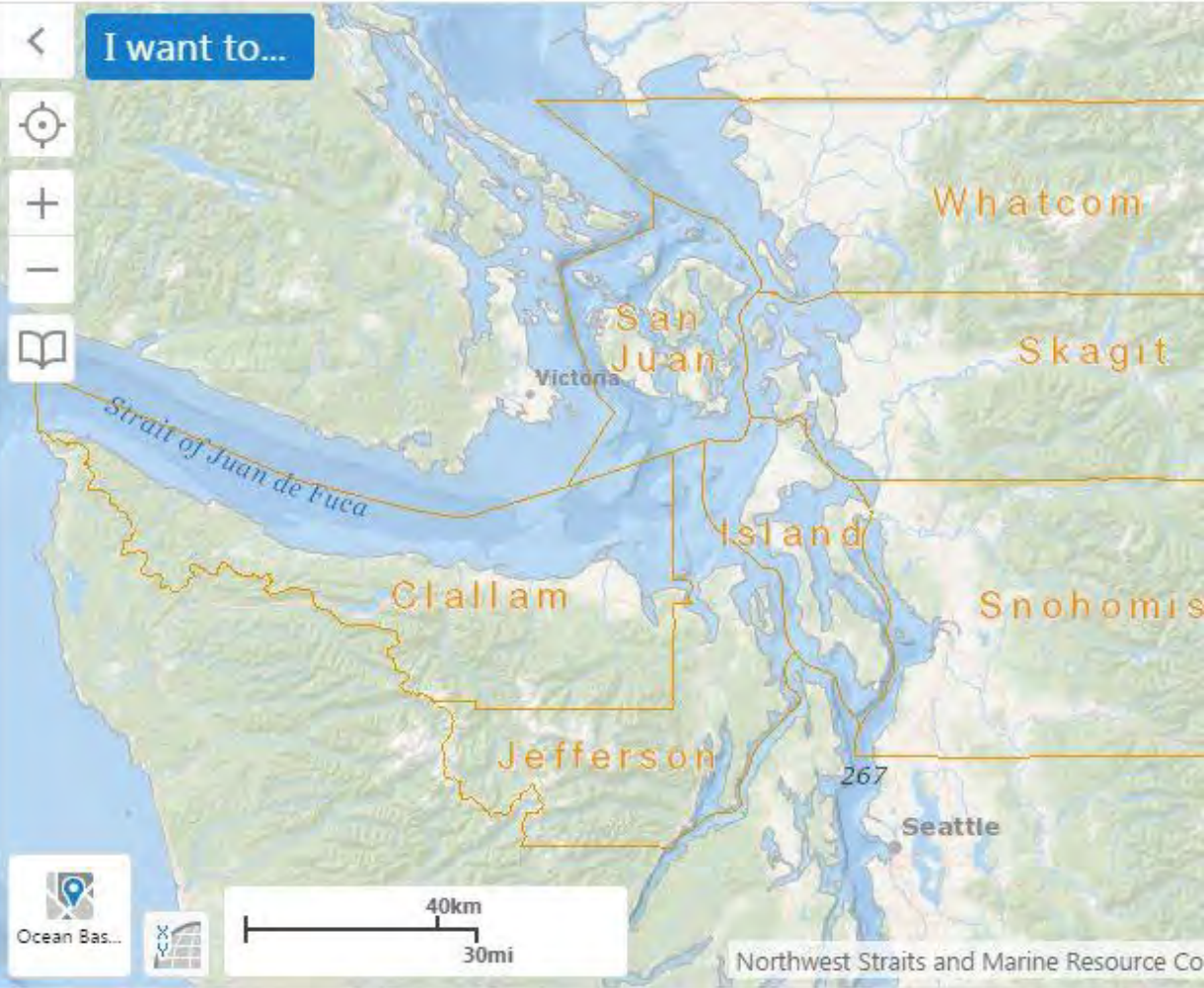
SoundIQ allows you to search for Puget Sound-area information and create custom maps. This mapping interface is flexible and should work on desktop, tablet and phone devices.

Among other things, you can:

- Find published MRC reports for a site
Use the I want to button and choose "Run a Beach Report", click on the map to select the area, and wait for the tool to finish. Your report will include relevant reports for that area.

Search for a location

Find map features and other results by using



Forage Fish Spawn Habitat Suitability

Search...

Layers

- (WDFW)
- Sand Lance - Spawning (WDFW)

- Forage Fish Spawn-Habitat Suitability (NWSI)

Not likely any eggs

Low likelihood of eggs

Moderate likelihood of eggs

High likelihood of eggs

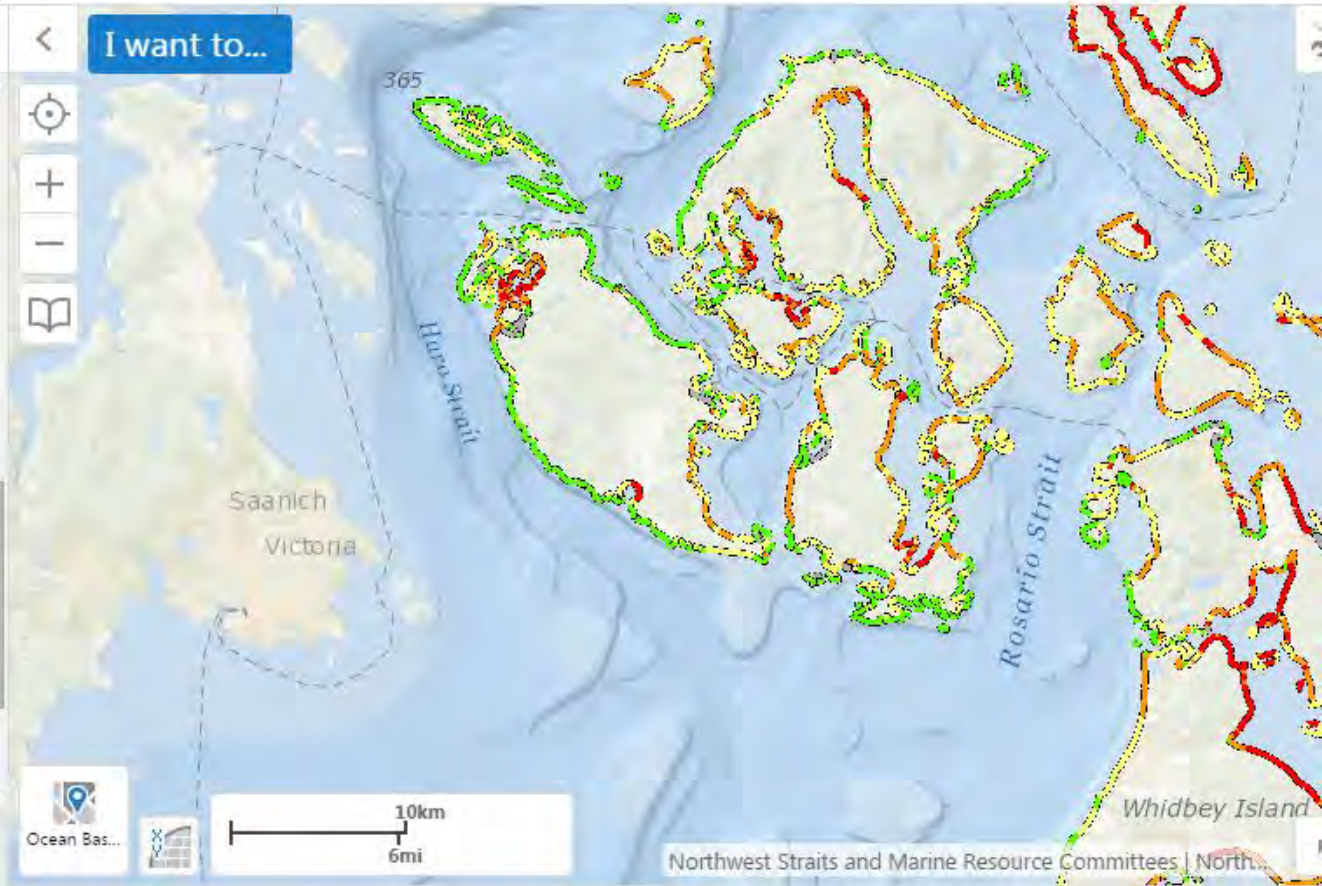
Very High likelihood of eggs

+ Birds

+ Marine Mammals

+ Management Areas

I want to...







Forage Fish Spawning Surveys



CATCH MORE CRAB!

Seven helpful tips to prevent your crab pot from becoming one of the 12,000 pots lost in Puget Sound each year:

- **Avoid high traffic**, marine transit and ferry lanes.
- **Check tides and currents.** Avoid crabbing during strong tidal changes and currents.
- **Make buoys more visible.** Add a second buoy or a stick and flag.
- **Use a weighted line** to sink below the surface and avoid being cut by passing boats.
- **Weight your crab pots** so they do not move with currents or tidal changes.
- **Use longer line.** Use 1/3 more line than the water depth to allow for changes in tides and currents.
- **Secure lid and escape panels with cotton (biodegradable) escape cord.** Crabs can escape from lost pots after the cord degrades.



for more information visit derelictgear.org

#CatchMoreCrab

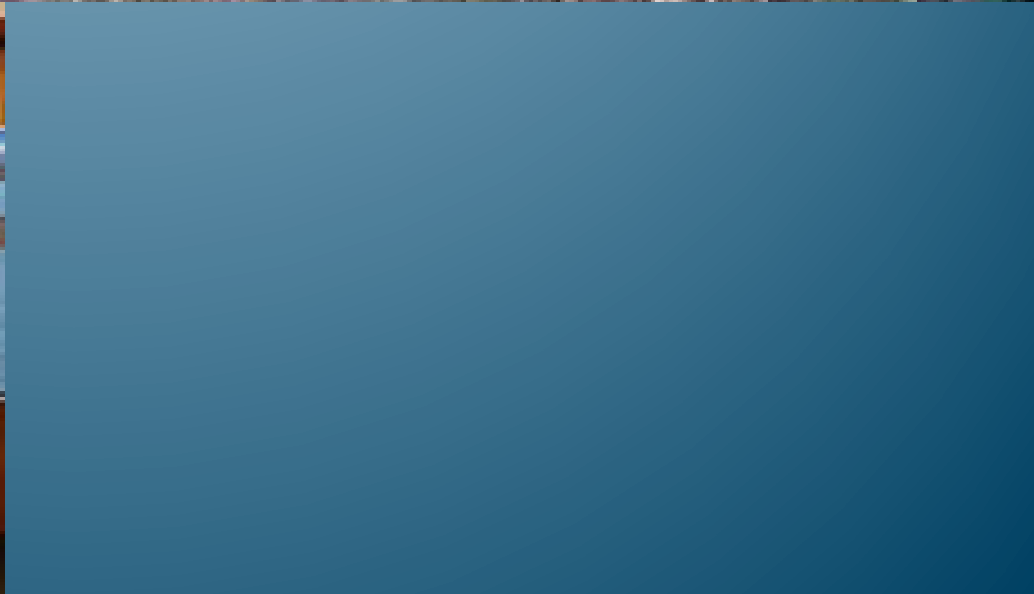








Expand your work with an Internship Program



CLEAN WATER

Wanna help?

- Pick up pet waste.
- Dispose of medicines properly.
- Check your car for oil leaks.

Jefferson County
Marine Resources Committee
jeffersonmrc.org

Flowing from the Lake to the Bay

The Terrell Creek Watershed

A watershed is the area of land that collects water flowing to a particular body of water. Small streams and wetlands in the upper watershed drain into Lake Terrell. From there Terrell Creek winds through a mix of agricultural lands, residential areas, open space and industry, picking up water from smaller streams that run into it. When it reaches the large marsh area at the southern end of the park the creek turns along the shoreline, emptying into Birch Bay.

3 The Chum's Journey

Each fall the big silver salmon return to their home, also known as the spawning area. In late fall, the salmon return to the lake to lay their eggs. The eggs hatch in the lake and the young salmon, called parrish, stay in the lake for a few years before heading out to sea to begin their life cycle.

1 The Stream

Small streams in low areas provide food for salmon and the people and wildlife that live along the stream. The stream is a natural habitat for fish and wildlife. The stream is a natural habitat for fish and wildlife. The stream is a natural habitat for fish and wildlife.

2 A Healthy Stream, Healthy Habitat Riparian Areas

Healthy riparian areas provide a natural habitat for fish and wildlife. The stream is a natural habitat for fish and wildlife. The stream is a natural habitat for fish and wildlife.

4 Join the Journey

The National Oceanic and Atmospheric Administration and the U.S. Fish and Wildlife Service are working together to improve the quality of the water in the watershed.



Jefferson County
**Marine
Resources
Committee**

