

INNOVATIVE TECHNOLOGIES



Blending strong science with grassroots consensus-building, the Northwest Straits Marine Conservation Initiative takes a locally-based approach to resource conservation.





Padilla Bay

National Estuarine Research Reserve



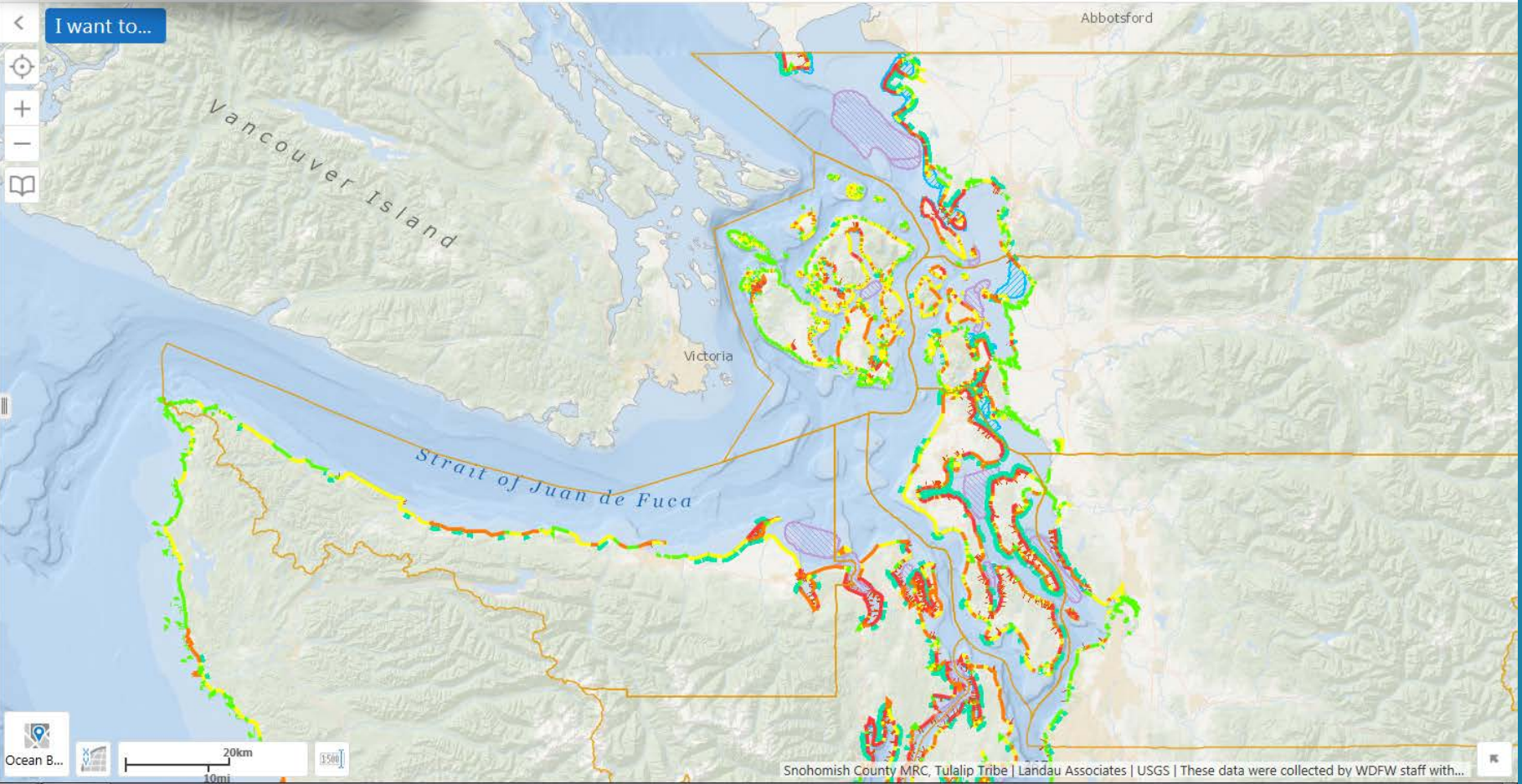
Search...

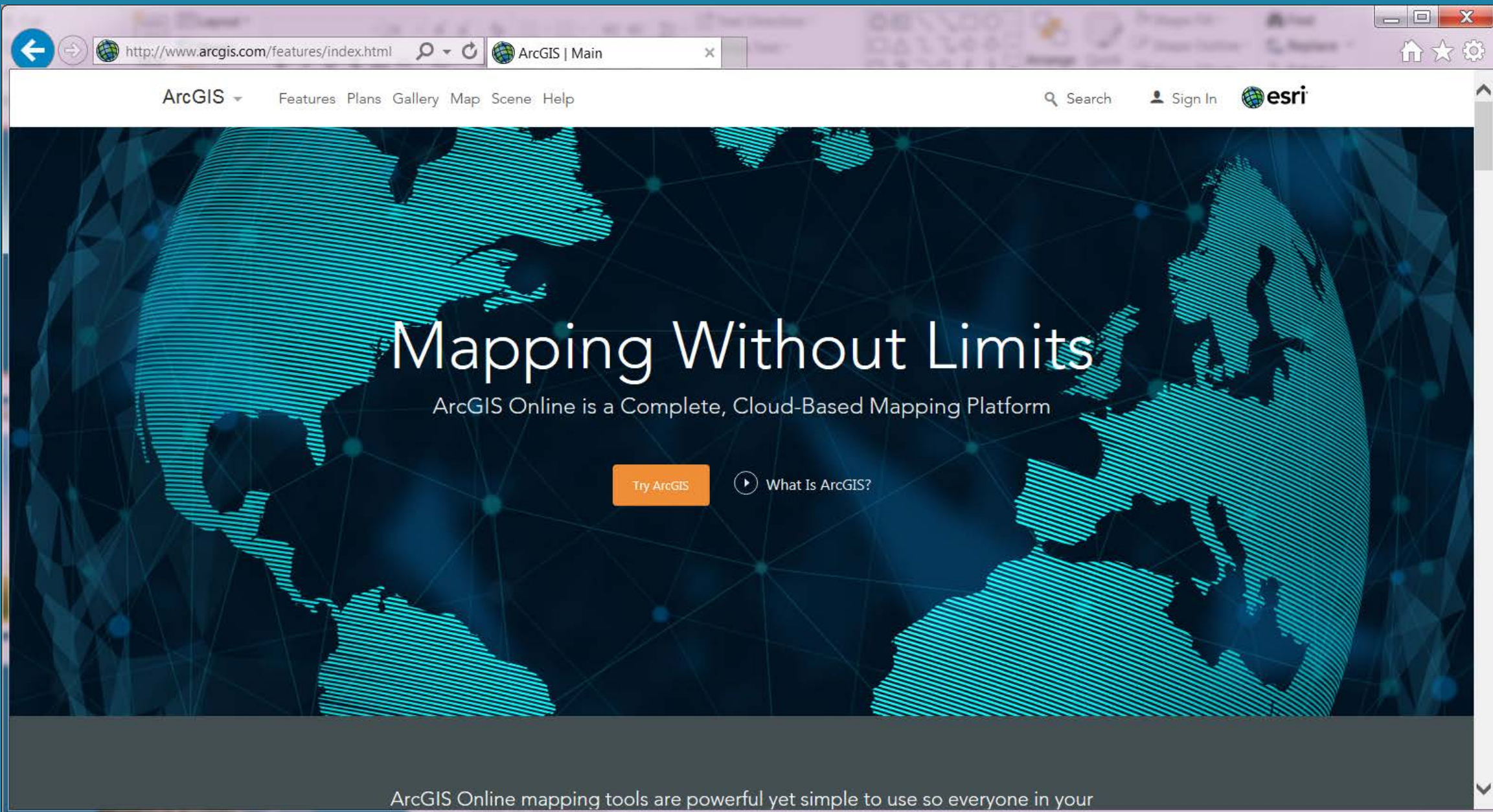
Bookmarks

Legend

Filter Swatches... Filter

- Northwest Straits Boundary
 - Northwest Straits Boundary
- Forage Fish Spawn-Habitat Suitability (NWSI)
 - Low
 - Med-Low
 - Medium
 - Med-High
 - High
- ForageFishSpawningData
 - Sand Lance Spawning
 - Smelt Spawning
 - Herring Spawning
 - Pre-spawner Herring Holding Areas
- + Ocean Basemap





Mapping Without Limits

ArcGIS Online is a Complete, Cloud-Based Mapping Platform

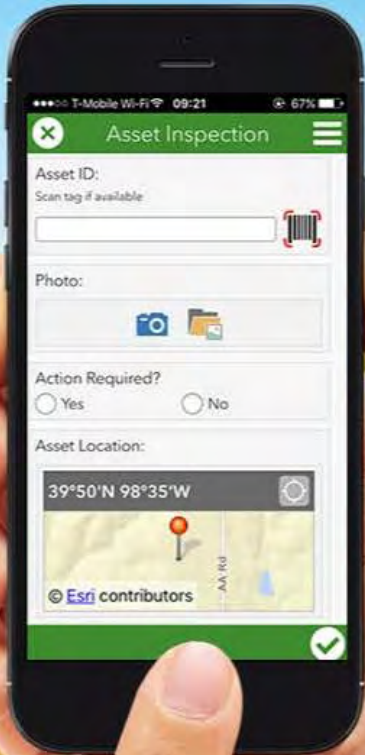
Try ArcGIS

▶ What Is ArcGIS?

ArcGIS Online mapping tools are powerful yet simple to use so everyone in your


Survey123 for ArcGIS









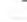
Smarter Forms, Smarter Field Work

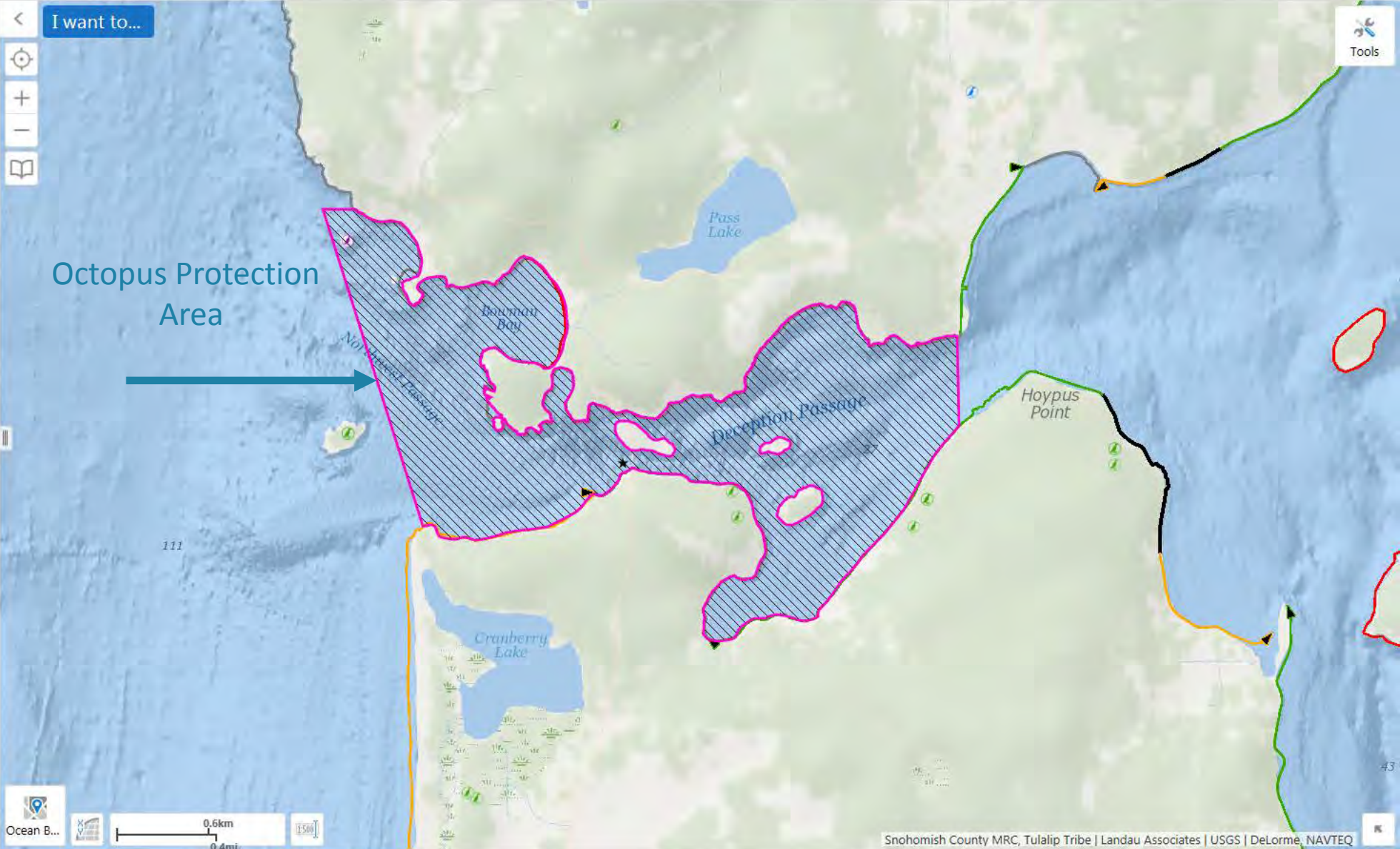




Legend

Filter Swatches... 

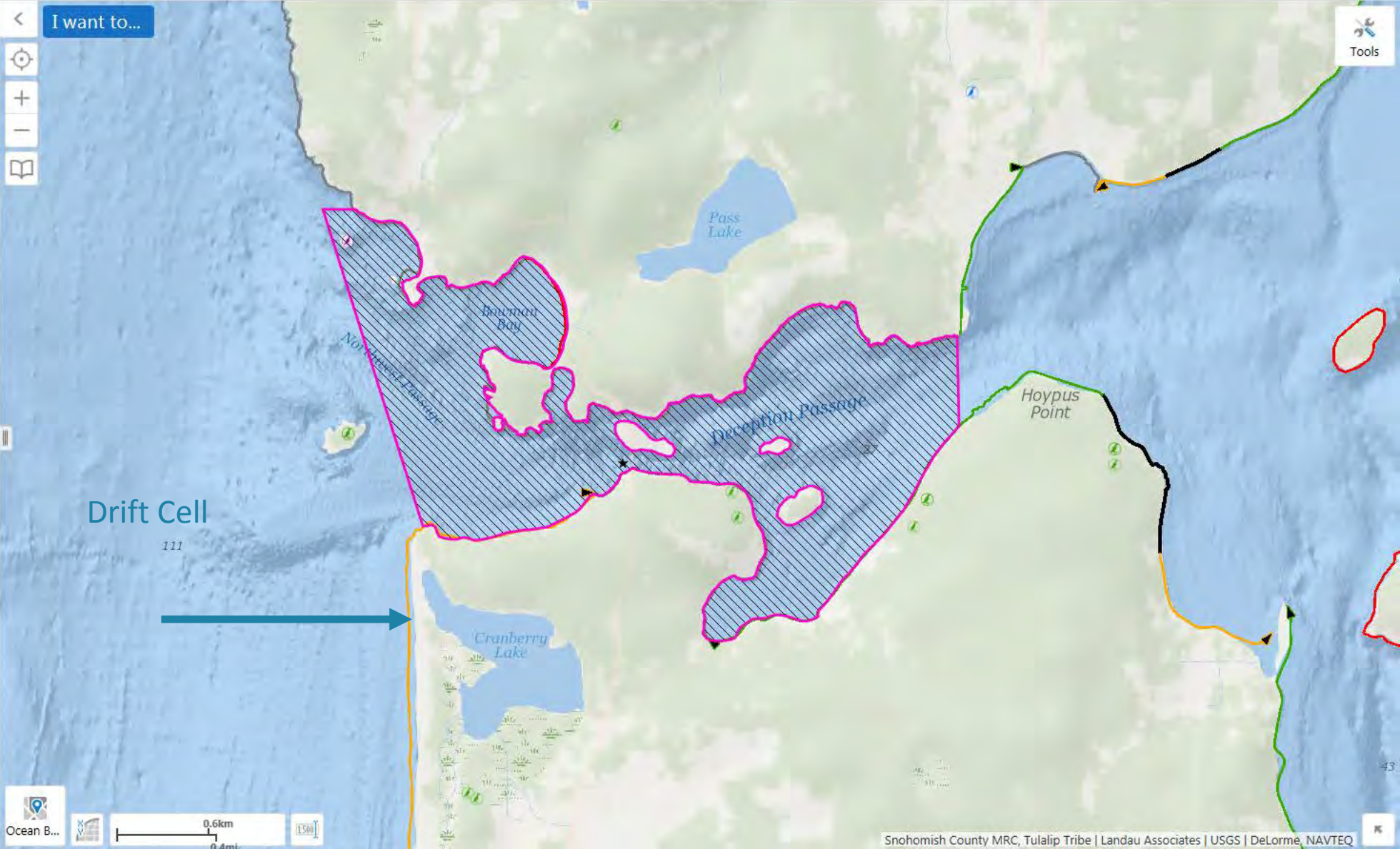
- Nesting Birds (NOAA/ESI)
 -  Bald eagle
 -  Great blue heron
 -  Seabirds
- Pigeon Guillemot Nesting Sites (IC)
 -  Pigeon Guillemot Nesting Sites (IC)
- + Octopus Protection Area (DFW)
- Coastal Atlas
- Drift Cells 2
 -  DZ
 -  Left to Right
 -  No Appreciable Drift
 -  Right to Left
 -  Undefined
- + Ocean Basemap



Legend

Filter Swatches...

- Nesting Birds (NOAA/ESI)
 - Bald eagle
 - Great blue heron
 - Seabirds
- Pigeon Guillemot Nesting Sites (IC)
 - Pigeon Guillemot Nesting Sites (IC)
- + Octopus Protection Area (DFW)
- Coastal Atlas
- Drift Cells 2
 - DZ
 - Left to Right
 - No Appreciable Drift
 - Right to Left
 - Undefined
- + Ocean Basemap

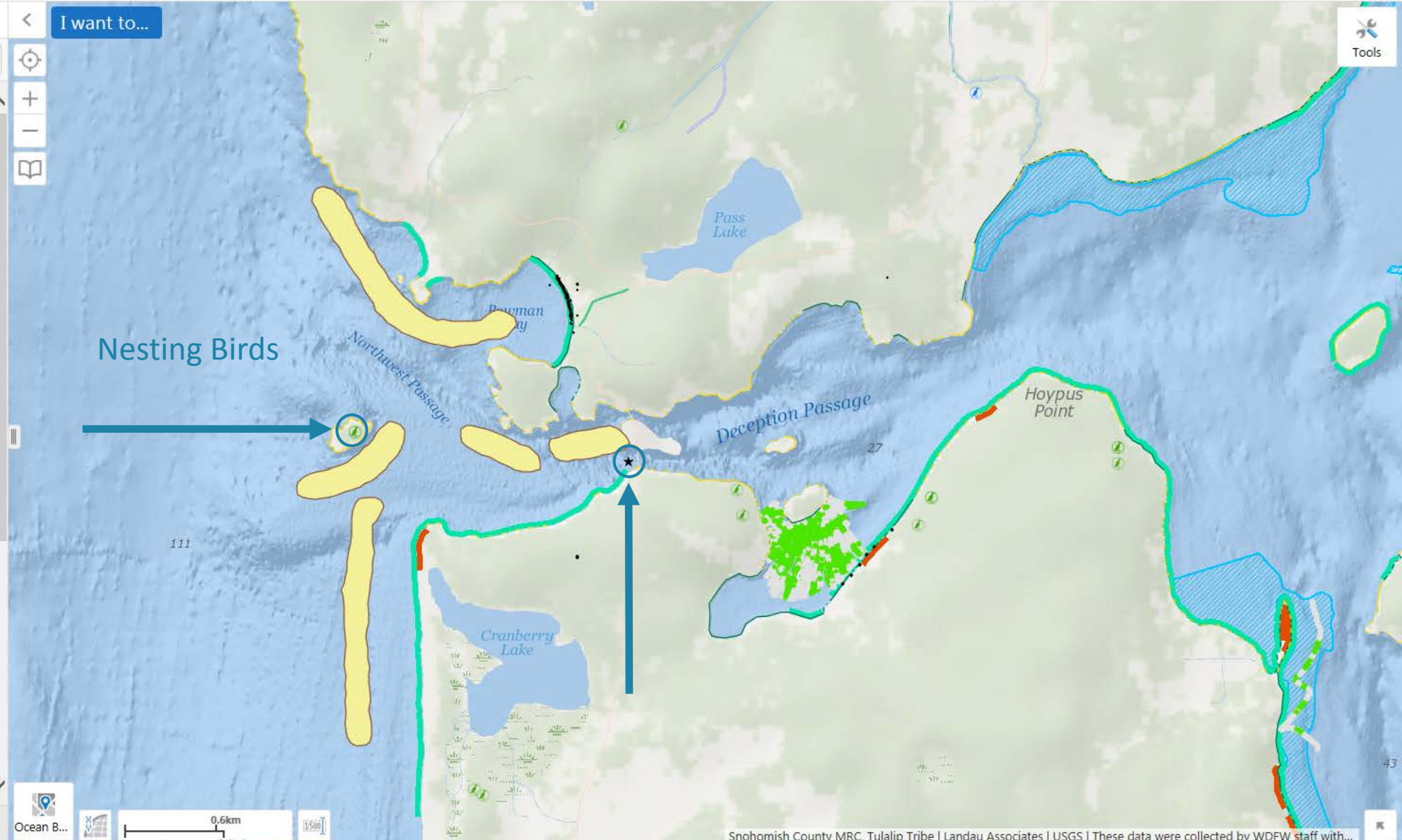


Legend

Filter Swatches...

- Kelp Rigg 1912 (WADNR)
 - Kelp Rigg 1912 (WADNR)
- + Nesting Birds (NOAA/ESI)
- Pigeon Guillemot Nesting Sites (IC)
 - Pigeon Guillemot Nesting Sites (IC)
- All SalmonScape Species
 - Coho Salmon
 - Pink Salmon
 - Steelhead Trout
 - Chinook Salmon
 - Chum Salmon
- Forage Fish Spawn Surveys Sites 2013-2015 (NWS Foundation/SC/IC)
 - Survey locations with no eggs
 - Surf smelt eggs
- + Kelp (WADNR)
- + Eelgrass (WADNR)
- Eelgrass 2014 (Island)
 - Z japonica
 - Z marina
 - Z marina & Z japonica

Home Legend

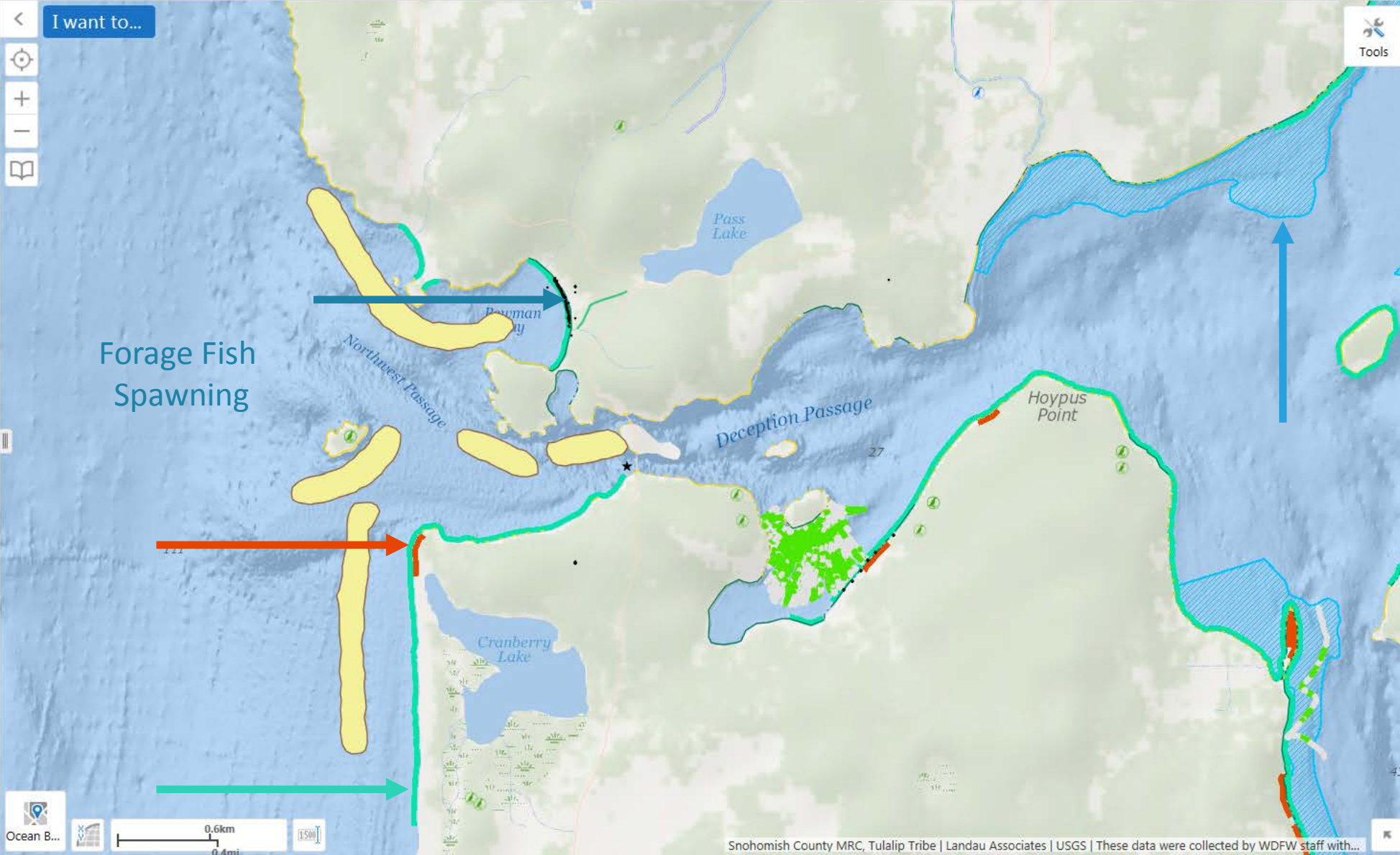


Legend

Filter Swatches... Filter

- Kelp Rigg 1912 (WADNR)
 - Kelp Rigg 1912 (WADNR)
- + Nesting Birds (NOAA/ESI)
- Pigeon Guillemot Nesting Sites (IC)
 - Pigeon Guillemot Nesting Sites (IC)
- All SalmonScape Species
 - Coho Salmon
 - Pink Salmon
 - Steelhead Trout
 - Chinook Salmon
 - Chum Salmon
- Forage Fish Spawn Surveys Sites 2013-2015 (NWS Foundation/SC/IC)
 - Survey locations with no eggs
 - Surf smelt eggs
- + Kelp (WADNR)
- + Eelgrass (WADNR)
- Eelgrass 2014 (Island)
 - Z japonica
 - Z marina
 - Z marina & Z japonica

Home Legend

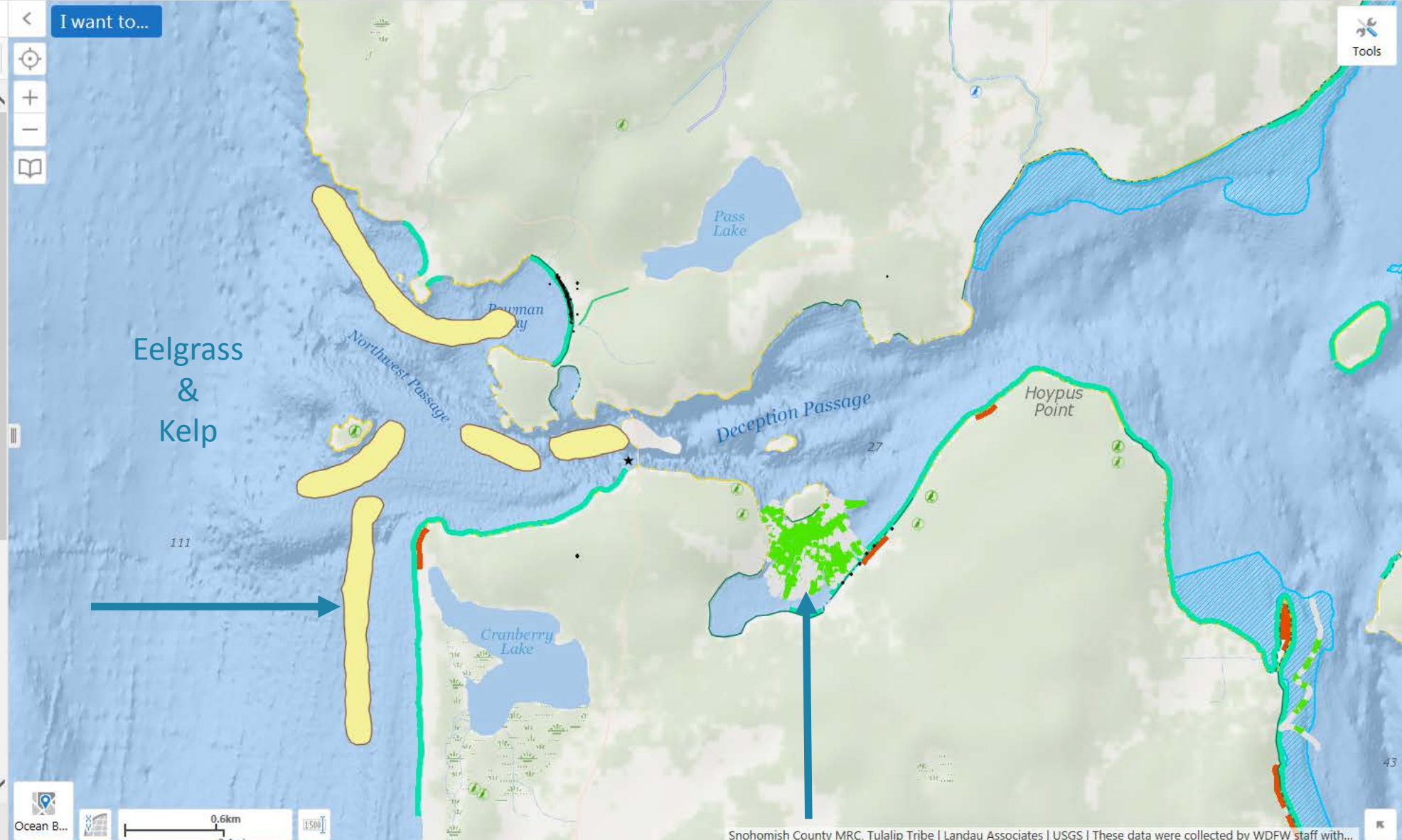


Legend

Filter Swatches...

- Kelp Rigg 1912 (WADNR)
 - Kelp Rigg 1912 (WADNR)
- + Nesting Birds (NOAA/ESI)
- Pigeon Guillemot Nesting Sites (IC)
 - Pigeon Guillemot Nesting Sites (IC)
- All SalmonScape Species
 - Coho Salmon
 - Pink Salmon
 - Steelhead Trout
 - Chinook Salmon
 - Chum Salmon
- Forage Fish Spawn Surveys Sites 2013-2015 (NWS Foundation/SC/IC)
 - Survey locations with no eggs
 - Surf smelt eggs
- + Kelp (WADNR)
- + Eelgrass (WADNR)
- Eelgrass 2014 (Island)
 - Z japonica
 - Z marina
 - Z marina & Z japonica

Home Legend



BMP
JPEG
PNG
TIFF
GeoTIFF
PDF

Include Georeference Data

Create Image

Share

Facebook

Twitter

LinkedIn

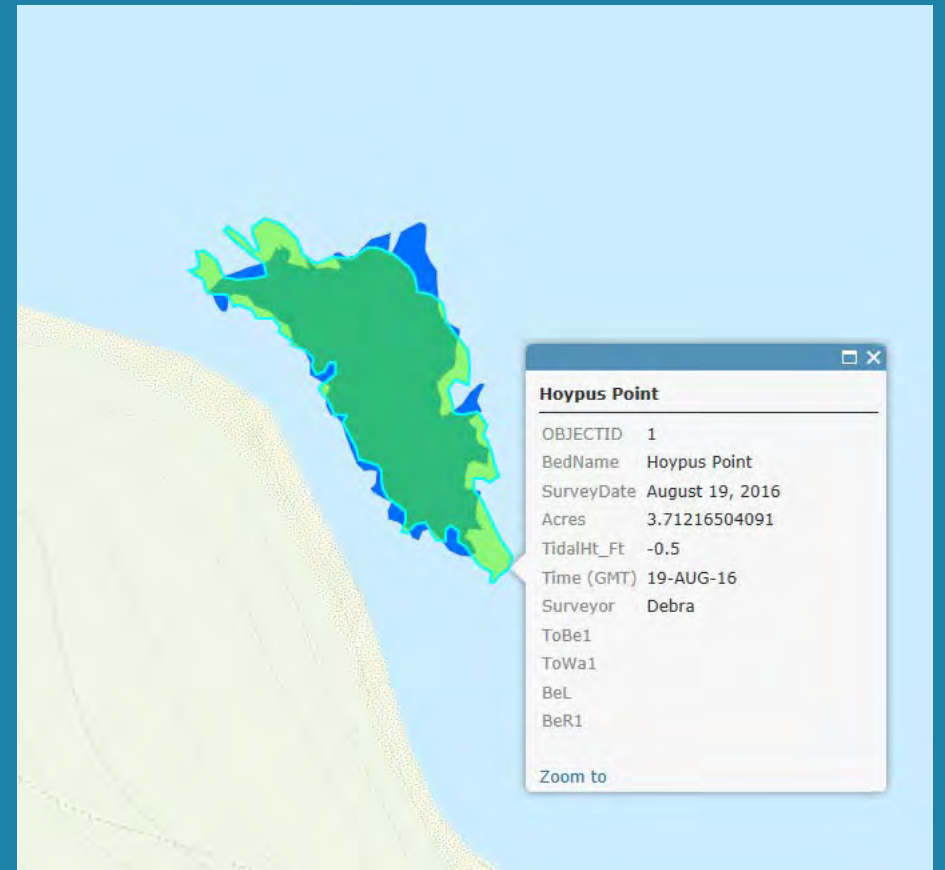
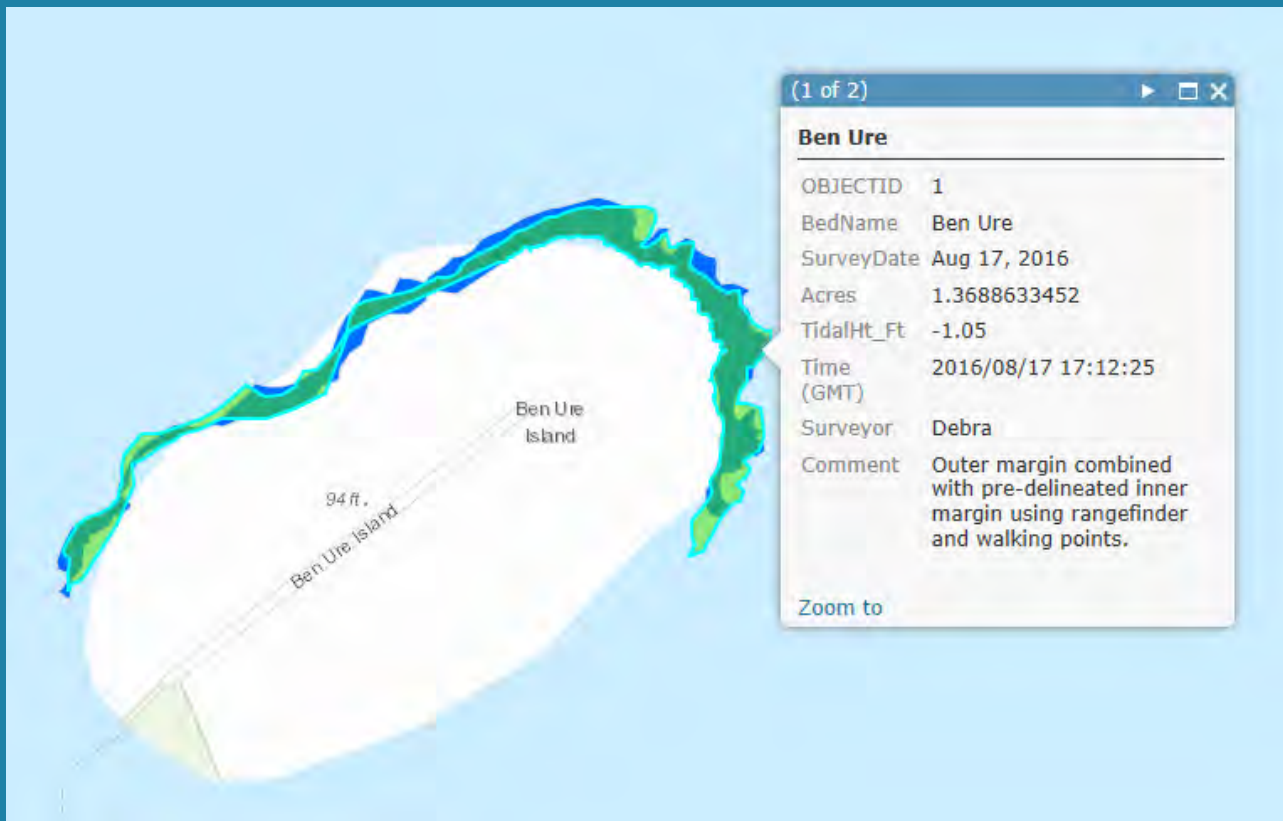
Google+

Email

Legend

- Hoypus_Point_2016 - August
- Hoypus_Point_2017_July25
- Coffin_Rocks_2016 - Aug
- CoffinRocks 2017_Aug21
- Ben_Ure_2016 - Aug 17
- Ben_Ure_2017_Sept







Northwest Straits Bull Kelp Survey

This app, developed by NW Straits Initiative, provides a tool to inventory summer 2017 bull kelp beds along the Salish Sea shorelines via photo submissions from citizen scientists.

Kelp Bed Photo *

Take a photo of the kelp bed and enter some information about it below.

Click here to upload file. (<10MB, support: jpg, jpeg, png, gif)

Where was the photo taken from? *

Select one:

-Please Select-

Where are you? *

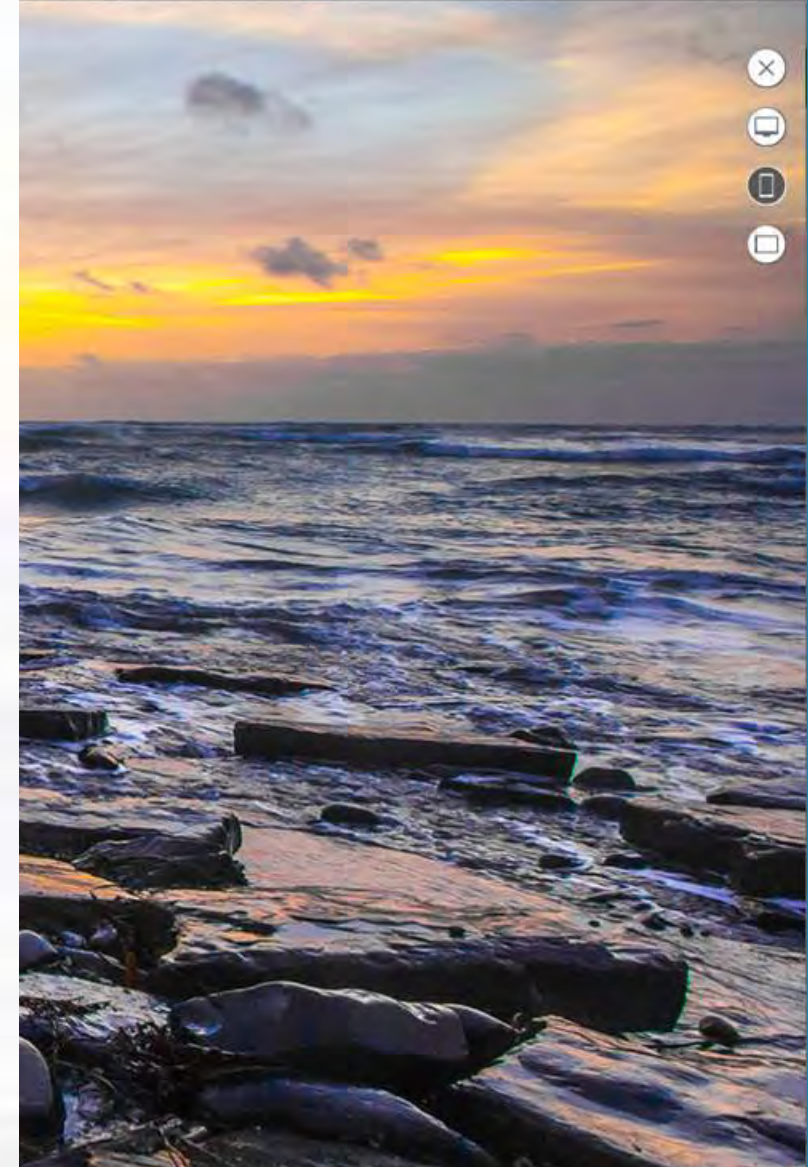
Provide name of beach or nearby landmark to label your photo.

Select an estimated size of kelp bed (in square meters)

- Less than 5
- Between 5 and 10
- Greater than 10

Comments

i.e. presence of kelp crabs, otters, urchins etc...



About Content Legend

Legend

- Northwest Straits Bull Kelp Survey_fieldworker
 - Survey Point
- Northwest Straits Kelp Surveys by Number of Years
 - 1
 - 2
 - 3
- Bull Kelp (WADNR 2001)
 - PATCHY
 - CONTINUOUS
- Hoypus_Point_Island_County_MRC_August_2016
- Coffin_Rocks_Skagit_County_MRC_August_2016
- Coffin_Rocks_Skagit_County_MRC_August_2017
- Ben_Ure_Island_County_MRC_August_2016
- Ben_Ure_Island_MRC_August_2017
- Historic_kelp_Rigg1912

surveyPoint

Where was the photo taken from? Photo from shore

Where was the photo taken from? Other -

Where are you? Hiking nw from Bowman bay to Rosario Head. Photo taken looking nw into Sharpe cove

Select an estimated size of kelp bed (in ...)

Between_S_and_10

Zoom to Get Directions Edit

estimated
size of kelp
bed (in
square
meters)

Comments

E-mail Russell@pedillebay.gov

Date: 6/26/2017, 12:00 AM

Time 11:17:00

Attachments:

IMG_4202.JPG

Edited on 6/26/17 at 2:30 PM

[Zoom to](#) [Get Directions](#) [Edit](#)






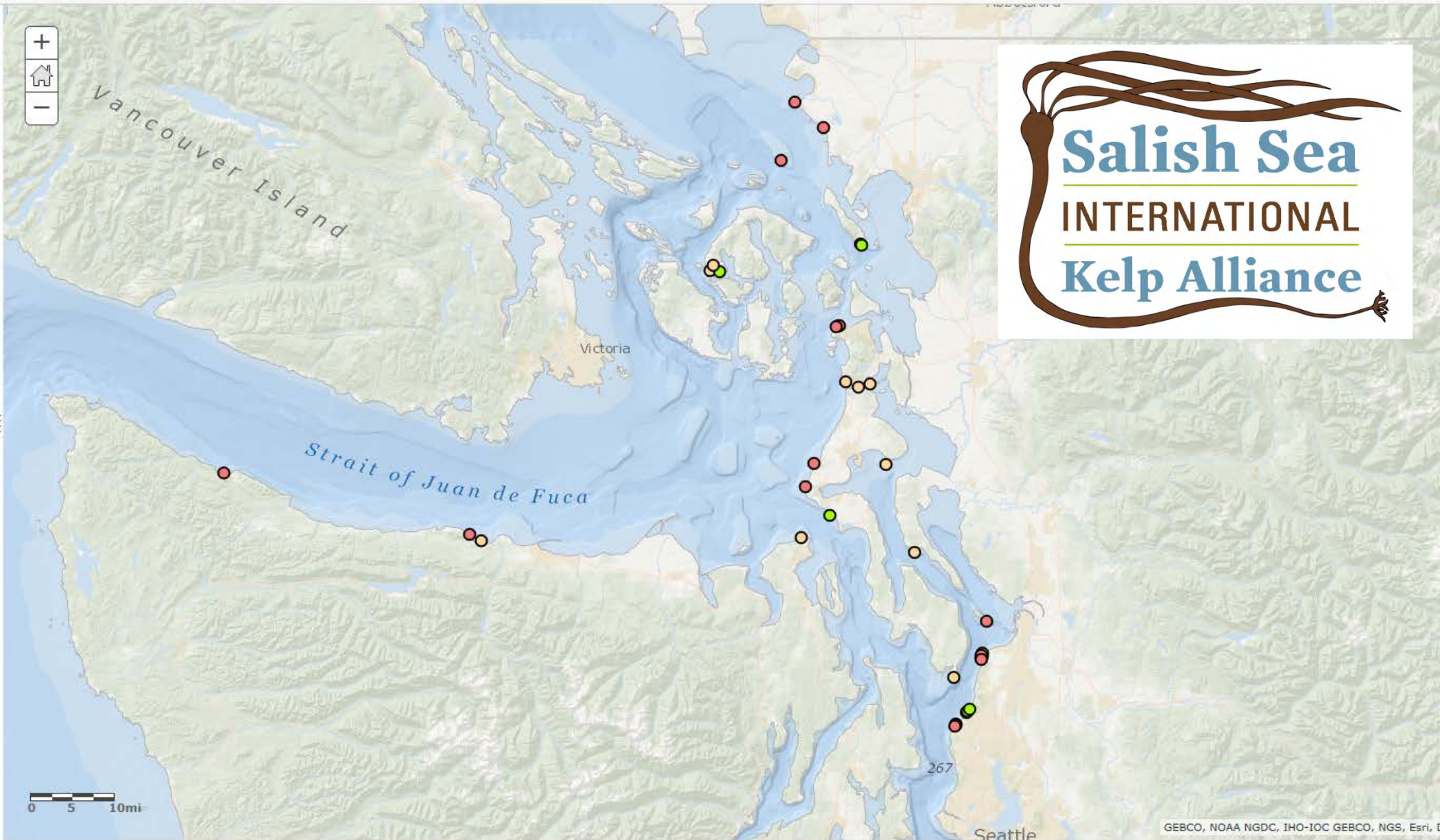
Coffin Rocks 2016-2017

Legend

MRC Kelp Kayak Survey Sites

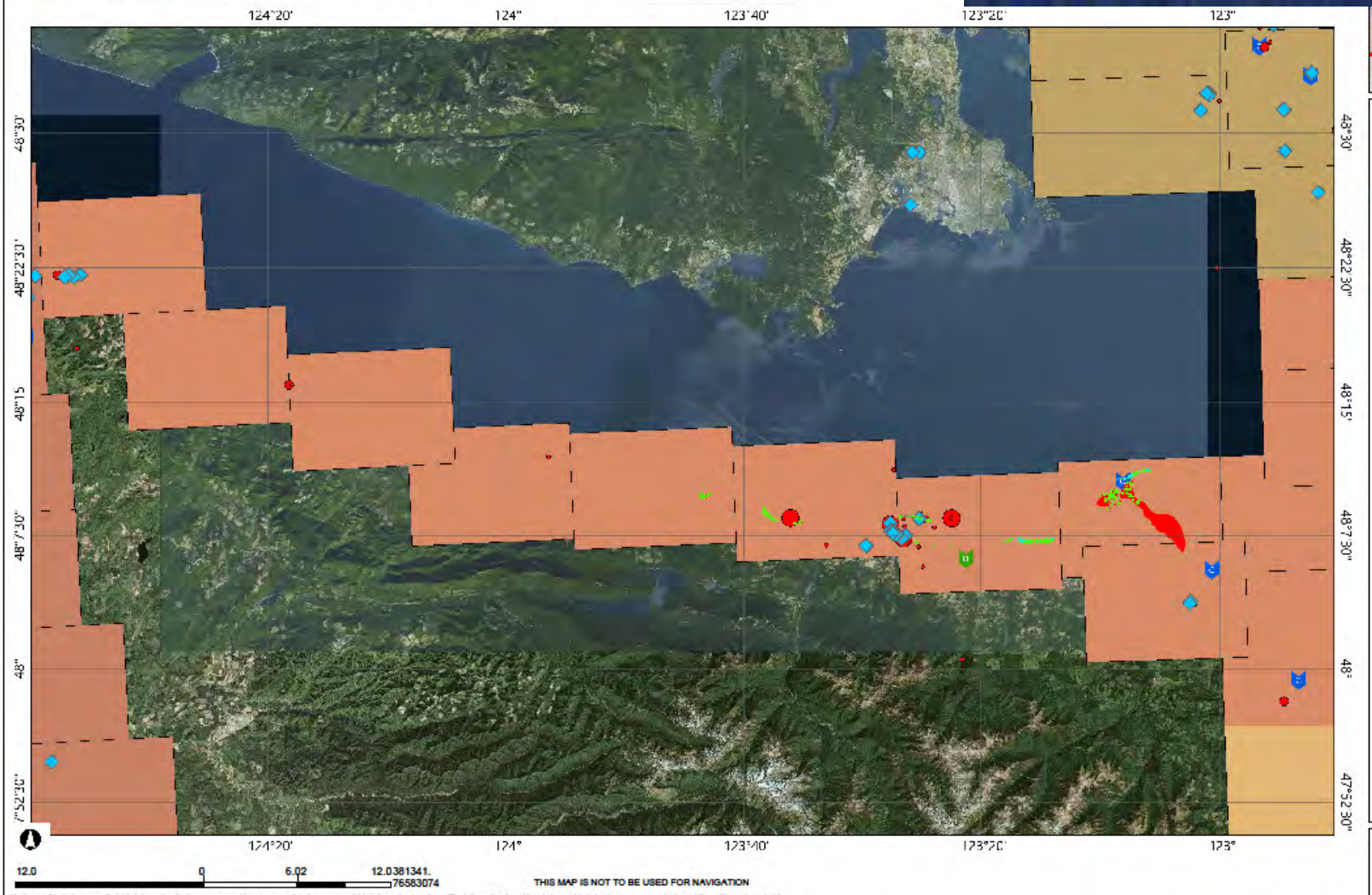
No. of Years Surveyed

-  1
-  2
-  3





ISLAND COUNTY
MARINE RESOURCES
COMMITTEE



- Eelgrass & Surf Grass 2006 & 2009
- Z marina
- Surfgrass
- Eelgrass polys 2009 (Clallam)
- Eelgrass polys 2009 (Clallam)
- Eelgrass polys 2006 (Clallam)
- Eelgrass polys 2006 (Clallam)
- Spill Maps
- ◆ WRRL Equipment Caches
- Incident 3
- 1.000000 - 10.000000
- 10.000001 - 100.000000
- 100.000001 - 1000.000000
- 1000.000001 - 11000.000000
- Coastal Protection Fund
- Direct Restoration Project

Northwest Straits has compiled this information for its own use and is not responsible for any use of this information by others. The information found herein is provided simply as a courtesy to the public and is not intended for any third party use in any official, professional or other authoritative capacity. Persons using this information do so at their own risk and by such use agree to defend, indemnify and hold harmless Northwest Straits as to any claims, damages, liability, losses or suits arising out of such use. Printed from <http://www.kmap.org/sounds>.

— Human Structures (JC)

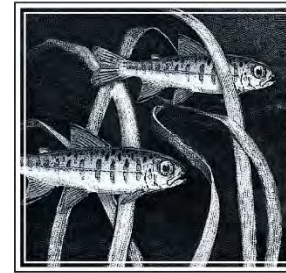
■ Dock-Pier

■ Jetty-Groin

🚤 Launch Ramp

🚂 Rail Launch

🪜 Stairs



Jefferson County
**Marine
Resources
Committee**

Eelgrass 2007, 2010, 2014&2015 (Jefferson)

- Z marina
- Z japonica
- Both Zm and Zj
- Realtime Zm observed, not post-processed
- No Eelgrass Present
- No Eelgrass, not post processed



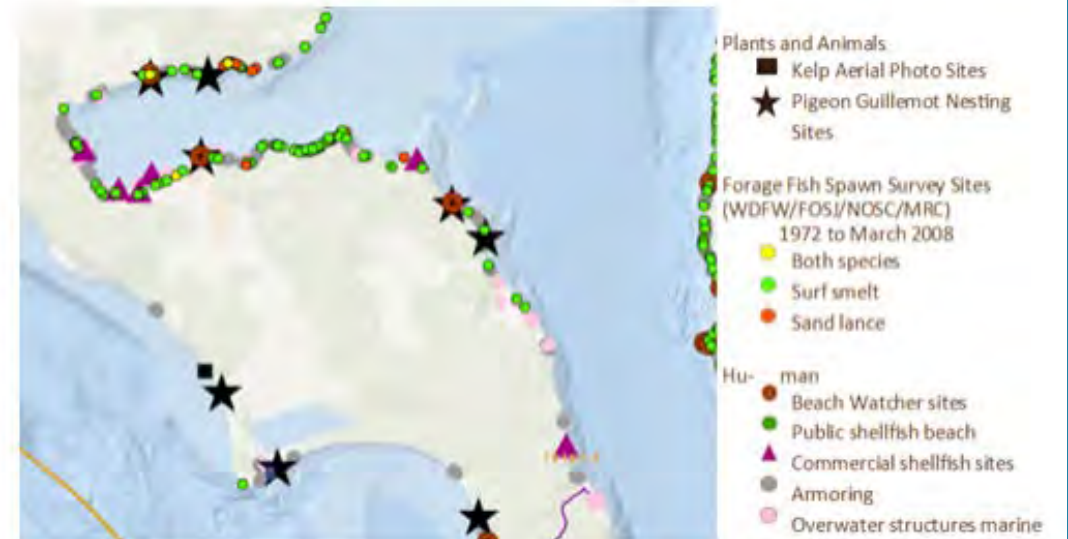


SoundIQ

A PROJECT OF THE
NORTHWEST STRAITS COMMISSION

WHAT CAN YOU DO WITH SOUNDIQ?

- Learn about MRC projects
- Find MRC data and reports
- View and change visible map data layers
- Print or share a map
- Search and download data
- Get inspired to fill additional data gaps



[Click here for the step-by-step guide for navigating SoundIQ.](http://www.nwstraits.org/our-work/soundiq/)

<http://www.nwstraits.org/our-work/soundiq/>

http://www.arcgis.com/home/index.html

ArcGIS Online

ArcGIS Features Plans Gallery Map Scene Help

Sign In

ArcGIS

Country Population Estimates, 2015, from

Crime Rate Comparison Map

Seismic Seafloor Feature Anomalies

Southern Pine Beetle Prevention Program

✓ Sign-up now
Get a free ArcGIS Online account and start making web maps today.

✉ Make a Map
Create a map that can be viewed in a browser, desktop or mobile device. Share it on a blog, via email, or embed it in a website.

📄 ArcGIS for Developers
Build custom web and mobile applications that incorporate your maps and data.

🎓 Discover Lessons
Take hands-on lessons based on real-world problems.

Esri.com | Help | Terms of Use | Privacy | Contact Esri | Report Abuse

<http://arcgisonline.com/>

Northwest Straits Bull Kelp Survey

This app, developed by NW Straits Initiative, provides a tool to inventory summer 2017 bull kelp beds along the Salish Sea shorelines via photo submissions from citizen scientists.

Kelp Bed Photo *

Take a photo of the kelp bed and enter some information about it below.

[Click here to upload file.](#) (<10MB, support: jpg, jpeg, png, gif)

Where was the photo taken from? *

Select one:

-Please Select-

Where are you? *

Provide name of beach or nearby landmark to label your photo.

Select an estimated size of kelp bed (in square meters)

- Less than 5
- Between 5 and 10
- Greater than 10

Comments

i.e. presence of kelp crebs, otters, urchins etc...

E-mail

Not required.

Date *

Time *

<https://tinyurl.com/y8m5x7n6>

Tribes
Marine Conservation
Commission
Puget Sound Partnership
Whatcom San Juan
Island Snohomish
SoundIQ Clallam
Foundation
Skagit
Jefferson



MRC

CITIZEN SCIENCE



Blending strong science with grassroots consensus-building, the Northwest Straits Marine Conservation Initiative takes a locally-based approach to resource conservation.

