



# Northwest Straits

## INITIATIVE

*partners in marine conservation*



Twitter: @nwstraits

Facebook: @nwstraits

Instagram: @nwstraits

Sanctuary idea...not very popular locally.





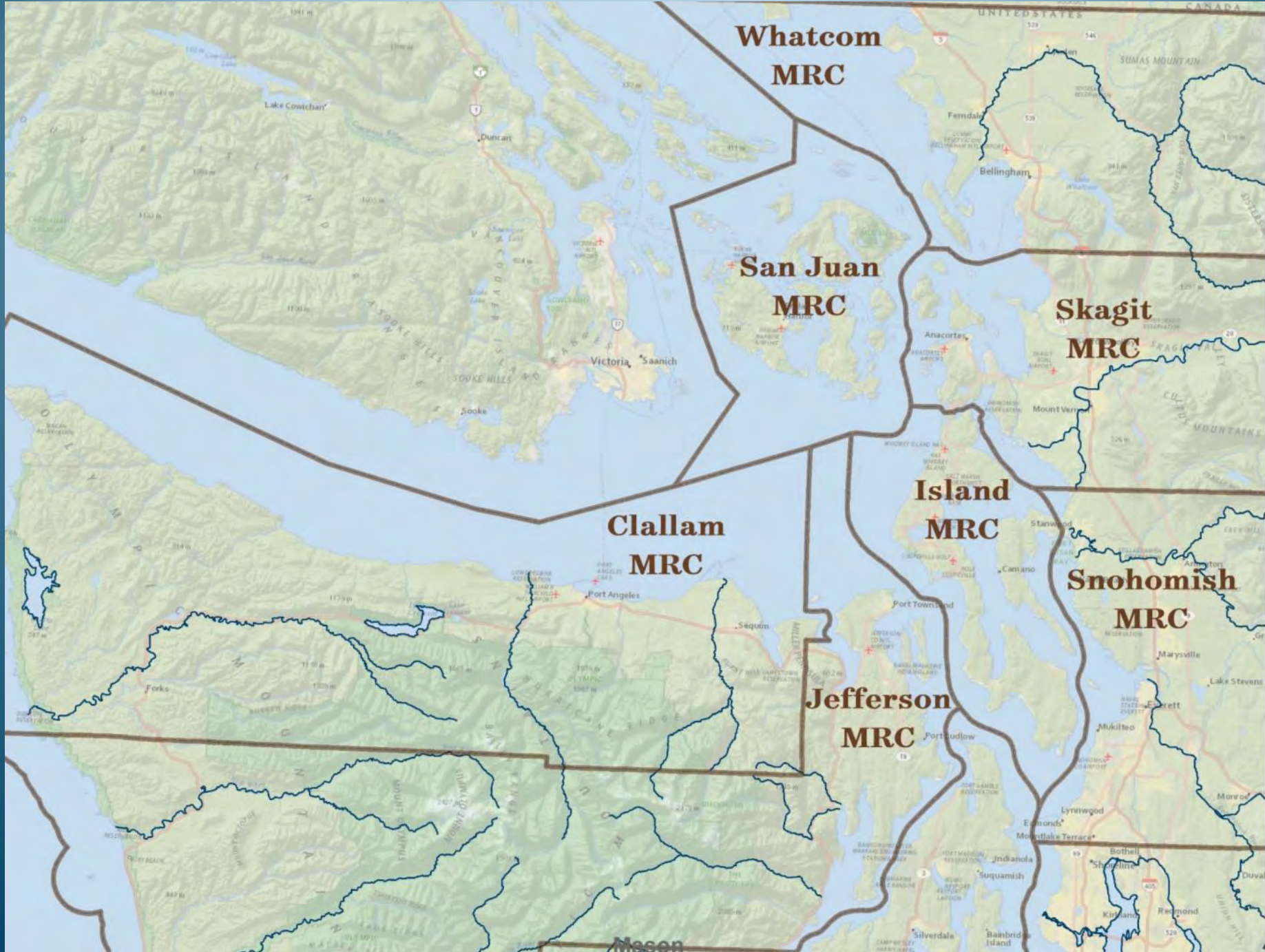
# History of the Northwest Straits Initiative

- The Murray-Metcalf Commission
- Congressional Authorization
- Bottom-up approach
- Modeled after San Juan MRC



# Created to...

Protect and restore marine waters, species and habitats of the Northwest Straits to achieve ecosystem health and sustainable resource use through a **local-based approach.**



**Whatcom  
MRC**

**San Juan  
MRC**

**Skagit  
MRC**

**Clallam  
MRC**

**Island  
MRC**

**Snohomish  
MRC**

**Jefferson  
MRC**

**Mason**



# Northwest Straits Commission - 2019



A board of directors for the organization.

# Northwest Straits Commission Staff 2019







- Provides base funding for MRCs
- Regional focus and strategic plan
- Data storage and sharing/ bibliography and Sound IQ
- Training and coordination among MRCs
- Integrates work with other regional programs

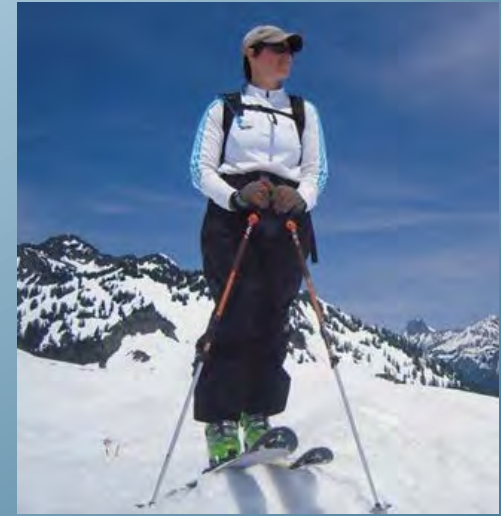


# Northwest Straits Foundation 2019



**Governance of the organization, fundraising**

# Northwest Straits Foundation Staff 2019

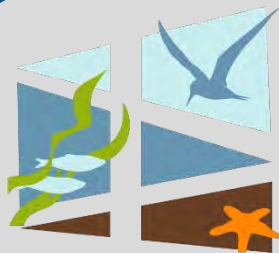






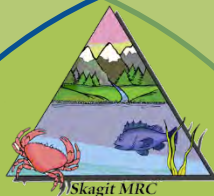
*partners in marine conservation*

- Non-profit organization – solicit funding from public and private sources
- Leverages support for MRC projects supplemental to core (federal) support
- Manages state-wide derelict fishing gear removal program
- Manages large restoration projects



# Northwest Straits

## INITIATIVE



CLALLAM COUNTY  
Marine Resources Committee

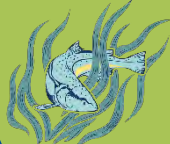
Northwest Straits  
COMMISSION

MRC  
Whatcom County



Snohomish County  
Marine Resources  
Committee

Northwest Straits  
FOUNDATION



ISLAND COUNTY  
MARINE RESOURCES  
COMMITTEE



Jefferson County  
Marine Resources  
Committee





# Initiative Funding

## Federal

EPA funds

Project  
funding

## State

Project  
funding

Biennial  
appropriation

## Other

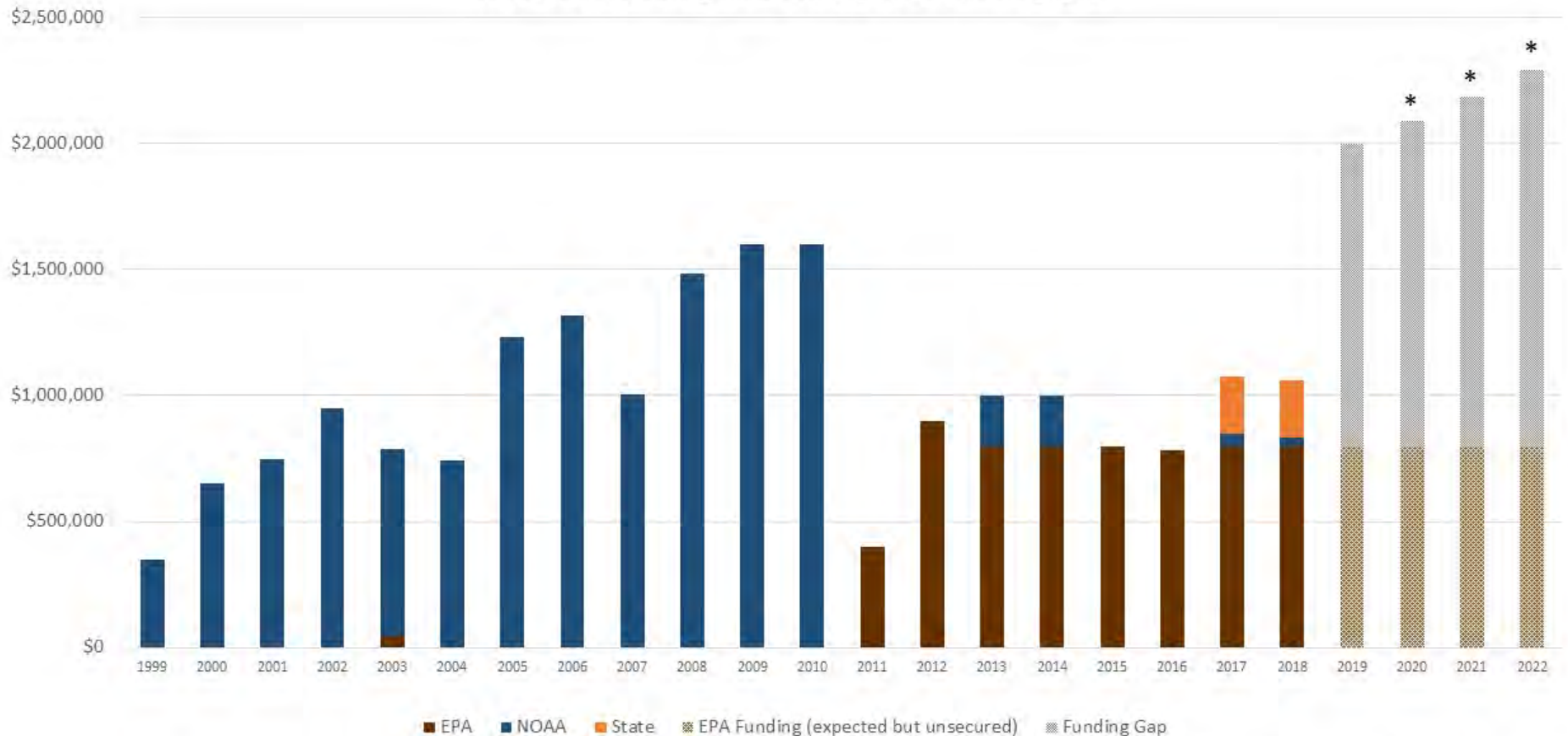
Opportunity  
fund

County  
contributions

Grant  
opportunities

# Northwest Straits Commission funding

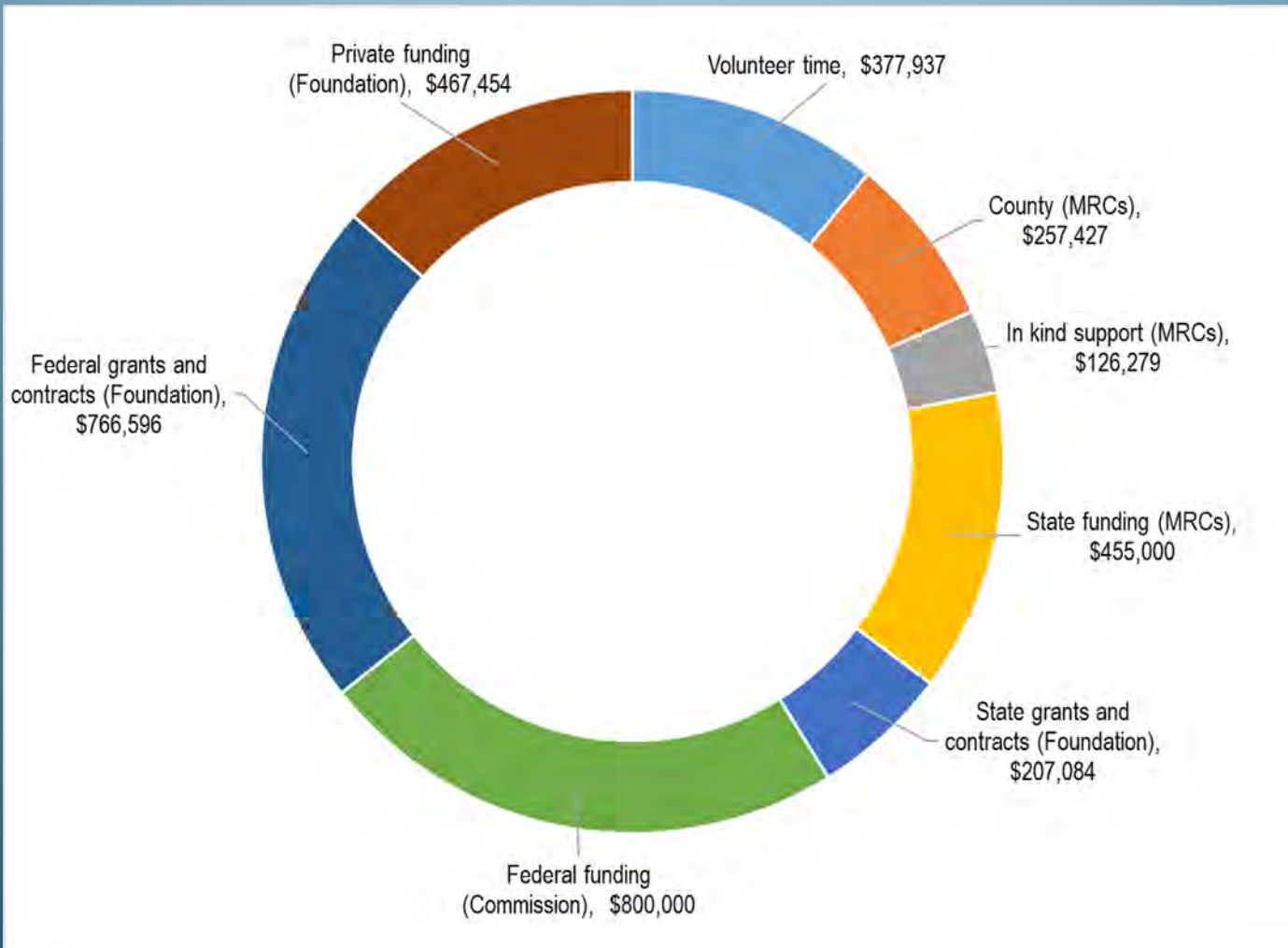
Northwest Straits Commission  
historical funding and anticipated funding gap



\*4.5% increase/year reflects cost of living, inflation and mandated staff salary adjustments



# 2018/2019 Initiative funding and match sources



Over 3:1 Leverage on \$800,000 federal investment

# Elected official connections







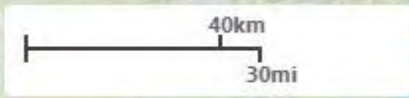
Northwest  
Straits  
Commission

Northwest  
Straits  
Commission

Northwest  
Straits  
Commission  
COMMISSION DE BASSIN COASTIER PACIFIQUE







# Welcome to SoundIQ!

## What can I do with SoundIQ?

SoundIQ allows you to search for Puget Sound-area information and create custom maps. This mapping interface is flexible and should work on desktop, tablet and phone devices.

Among other things, you can:

- Find published MRC reports for a site

Use the I want to button and choose "Run a Beach Report", click on the map to select the area, and wait for the tool to finish. Your report will include relevant reports for that area.

- Search for a location

Find map features and other results by using





Forage Fish Spawn Habitat Suitability

Search...

Layers

- (WDFW)
- Sand Lance - Spawning (WDFW)

- Forage Fish Spawn-Habitat Suitability (NWSI)

Not likely any eggs

Low likelihood of eggs

Moderate likelihood of eggs

High likelihood of eggs

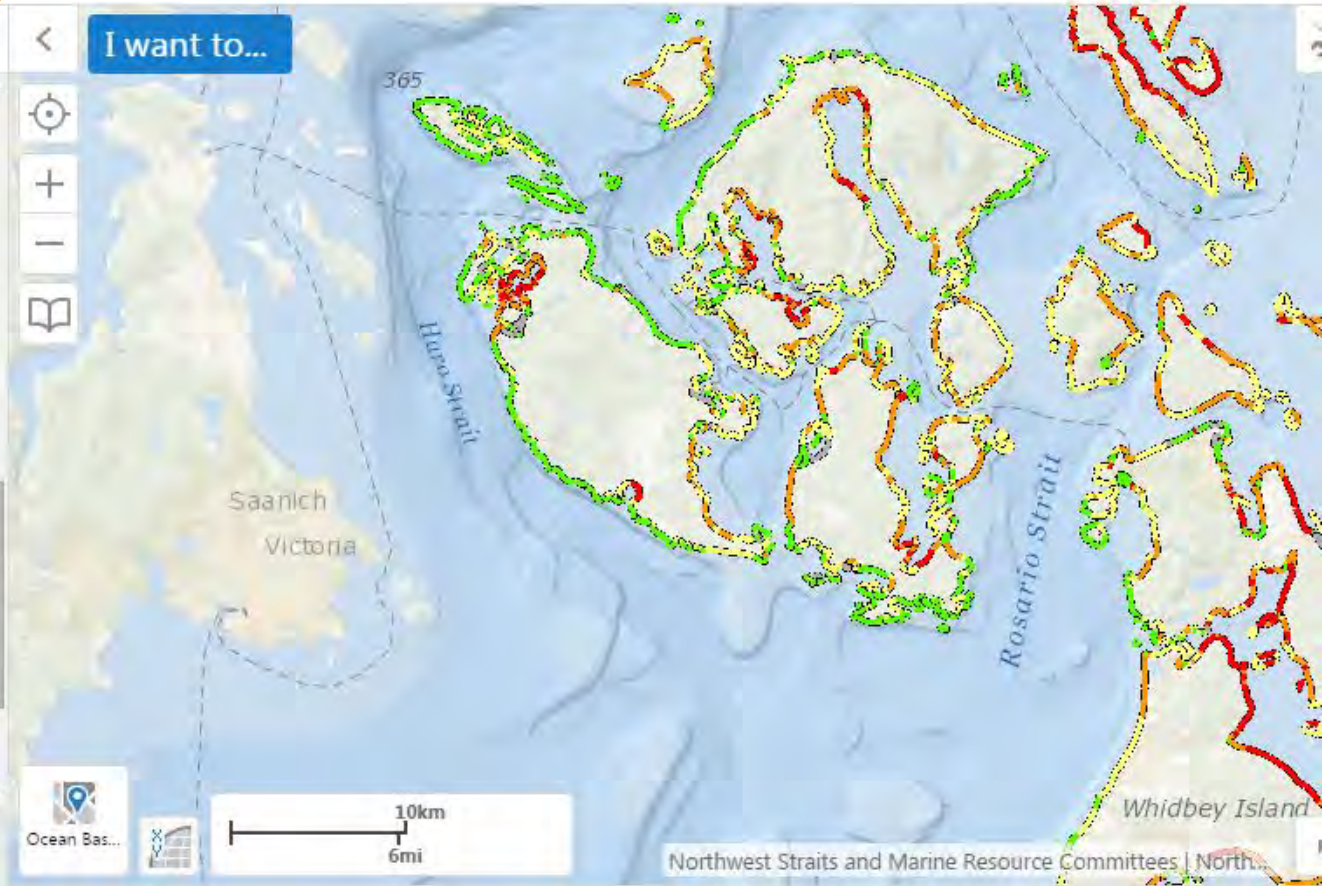
Very High likelihood of eggs

+  Birds

+  Marine Mammals

+  Management Areas

I want to...









# Forage Fish Spawning Surveys







CATCH  
MORE  
CRAB!

Seven helpful  
tips to prevent your  
crab pot from becoming  
one of the **12,000 pots lost in  
Puget Sound** each year:

- **Avoid high traffic**, marine transit and ferry lanes.
- **Check tides and currents.** Avoid crabbing during strong tidal changes and currents.
- **Make buoys more visible.** Add a second buoy or a stick and flag.
- **Use a weighted line** to sink below the surface and avoid being cut by passing boats.
- **Weight your crab pots** so they do not move with currents or tidal changes.
- **Use longer line.** Use 1/3 more line than the water depth to allow for changes in tides and currents.
- **Secure lid and escape panels with cotton (biodegradable) escape cord.** Crabs can escape from lost pots after the cord degrades.



for more information visit  
[derelictgear.org](http://derelictgear.org)

# #CatchMoreCrab

















# Expand your work with an Internship Program





# CLEAN WATER

## Wanna help?

- Pick up pet waste.
- Dispose of medicines properly.
- Check your car for oil leaks.

Jefferson County  
Marine Resources Committee  
jeffersonmrc.org

### Flowing from the Lake to the Bay

#### The Terrell Creek Watershed

A watershed is the area of land that collects water flowing to a particular body of water. Small streams and wetlands in the upper watershed drain into Lake Terrell. From there Terrell Creek winds through a mix of agricultural lands, residential areas, open space and industry, picking up water from smaller streams that run into it. When it reaches the large marsh area at the southern end of the park the creek turns along the shoreline, emptying into Birch Bay.

#### 1 A Healthy Stream, Healthy Habitat Riparian Areas

Overhanging vegetation provides a shading canopy for riparian fish, a source of food which also traps debris that the water has difficulty moving past and is not as dispersed as debris.

#### 2 The Stream

Stream banks in low reach provide food for salmon, and the pool and side channels are a resting place for fish heading to spawning grounds.

Salmon need clean water, good water flows and a variety of stream depths for their life. After spawning, most salmon will die and serve as a food source for other animals. Their decaying carcasses feed the riparian ecosystem and the nutrients are carried downstream to reach the marine environment.

#### 3 The Chumpy Journey

Small chum salmon (pinkish salmon) return to their home in the upper watershed, like salmon or sockeye salmon. As a salmon returns to the lake to the stream to start their life cycle, after spending three to five years at spawning and growing, the egg they lay will hatch in three to four months and the young fish will head towards the sea, to begin the cycle again.

#### 4 Join the Journey

The Nooksack Salmon Enhancement Association and the Club of Fishers are two volunteer organizations that work to improve salmon and wildlife habitat quality in the Nooksack watershed.

**ACRC**



Jefferson County  
**Marine  
Resources  
Committee**

