

Jefferson County Marine Resources Committee



Protecting & Restoring Marine Resources & Habitats



Jefferson County
**Marine
Resources
Committee**

www.jeffersonmrc.org

 **Northwest
Straits**
INITIATIVE
partners in marine conservation



Jefferson County **Marine Resources Committee**

20 members

County Dept: WSU Cooperative Extension

Diverse Representation



- Citizens
- Recreational interests
- Tribal
- Fishermen
- Scientists
- Economic interests
- Environmental
- Local government

Jefferson MRC Projects

- Rain gardens
- Eelgrass protection areas
- Olympia oysters
- Forage fish & kelp monitoring
- Educational programs





Jefferson County
**Marine
Resources
Committee**



**Northwest
Straits**
INITIATIVE

partners in marine conservation

PugetSoundPartnership

LEADING PUGET SOUND RECOVERY



United States
Environmental Protection
Agency



www.jeffersonmrc.org

North Olympic Salmon Coalition

Presented by: Rebecca Benjamin Executive Director



Charles Espey

EDUCATE ◀ RESTORE ◀ CELEBRATE

MRC Conference
Session: Building Community in
Conservation

November 16, 2019
Everett, WA

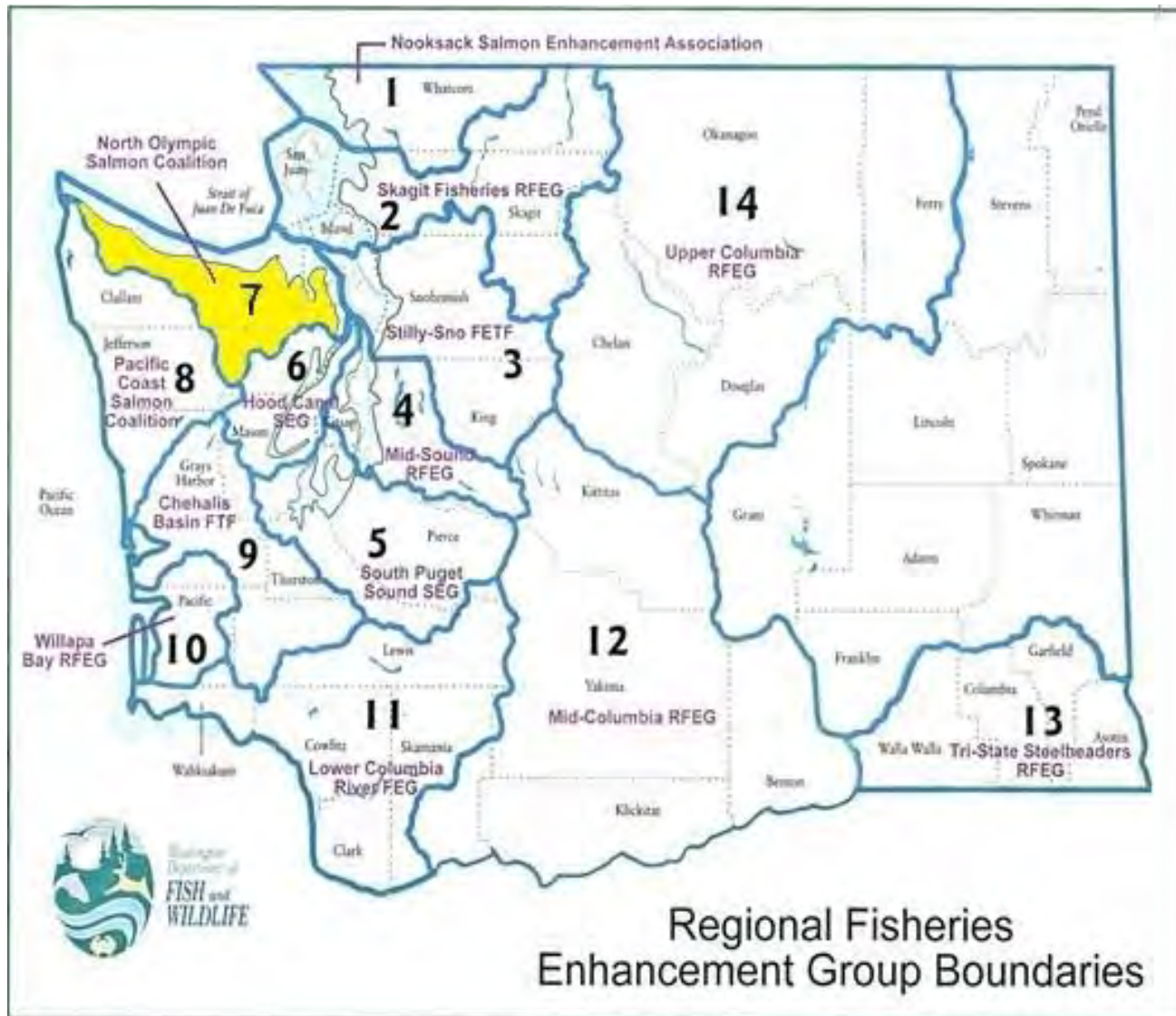




Community Stewardship ♦ Collaborative Restoration

The North Olympic Salmon Coalition works to promote robust wild salmon stocks for families, fishers, and local economies by furthering habitat restoration and education on the North Olympic Peninsula. We are one of fourteen Regional Fisheries Enhancement Groups in Washington State, working directly with State agencies, tribal governments and local communities across the Olympic Peninsula.







**NORTH OLYMPIC
SALMON
COALITION**

2,100
Participants in Outreach
and Education Activities

5,280
Feet of Habitat
Restored

32
Acres of
Invasive Species
Removed

10,800
WA Conservation Corps
Volunteer Hours

11,046
Native Riparian
Trees Planted

3,112
Volunteer
Hours

1,760
K-12 Students
Reached

1,800
Participants in
Hands-on Outreach,
Education & Monitoring Activities

21
Field Trips/
Classroom Visits

2
Habitat Restoration
Projects Completed



Photo: Courtesy WDFW





Boy Scouts planting trees along the Dungeness River. Photo by Nate Roberts.





Habitat Assessments



Spawner Surveys



Education Program



Winter Tree Plantings





Coastal Observation and Seabird Survey Team

COASST

Session: Building Community Connections
Julia K. Parrish, University of Washington

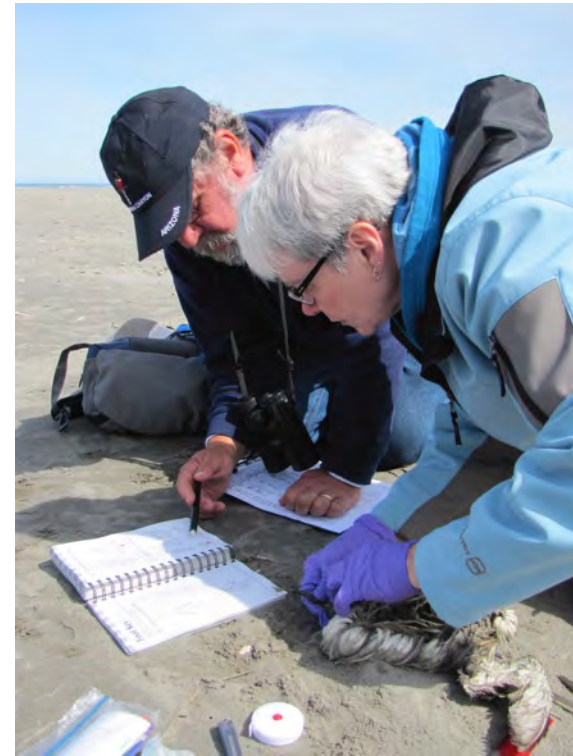
Northwest Straits Initiative: Partners in Marine Conservation
21st Annual MRC Committee Conference
Nov 2019, Everett, WA

COASST

COAST Beached Birds

What does it mean to participate?
(1-5 hours/month, depending on the beach)

- **survey** for beachcast carcasses of marine birds on *your* beach monthly
- **measure, collect condition information, identify and photograph** carcasses



What does it mean to participate? *(2-8 hours/month, depending on the beach)*

- **survey** and collect **samples** of marine debris on *your* beach monthly
- **characterize** and **photograph** marine debris samples, record quantity and indicators of source and environmental impact



COASST Stats



- 20 years
- 1,000 monthly participants
- ~5,000 people since inception
- 400 sites from Mendocino to Kotzebue
- 90 coastal communities
- 83,400 bird carcasses; 185 bird species



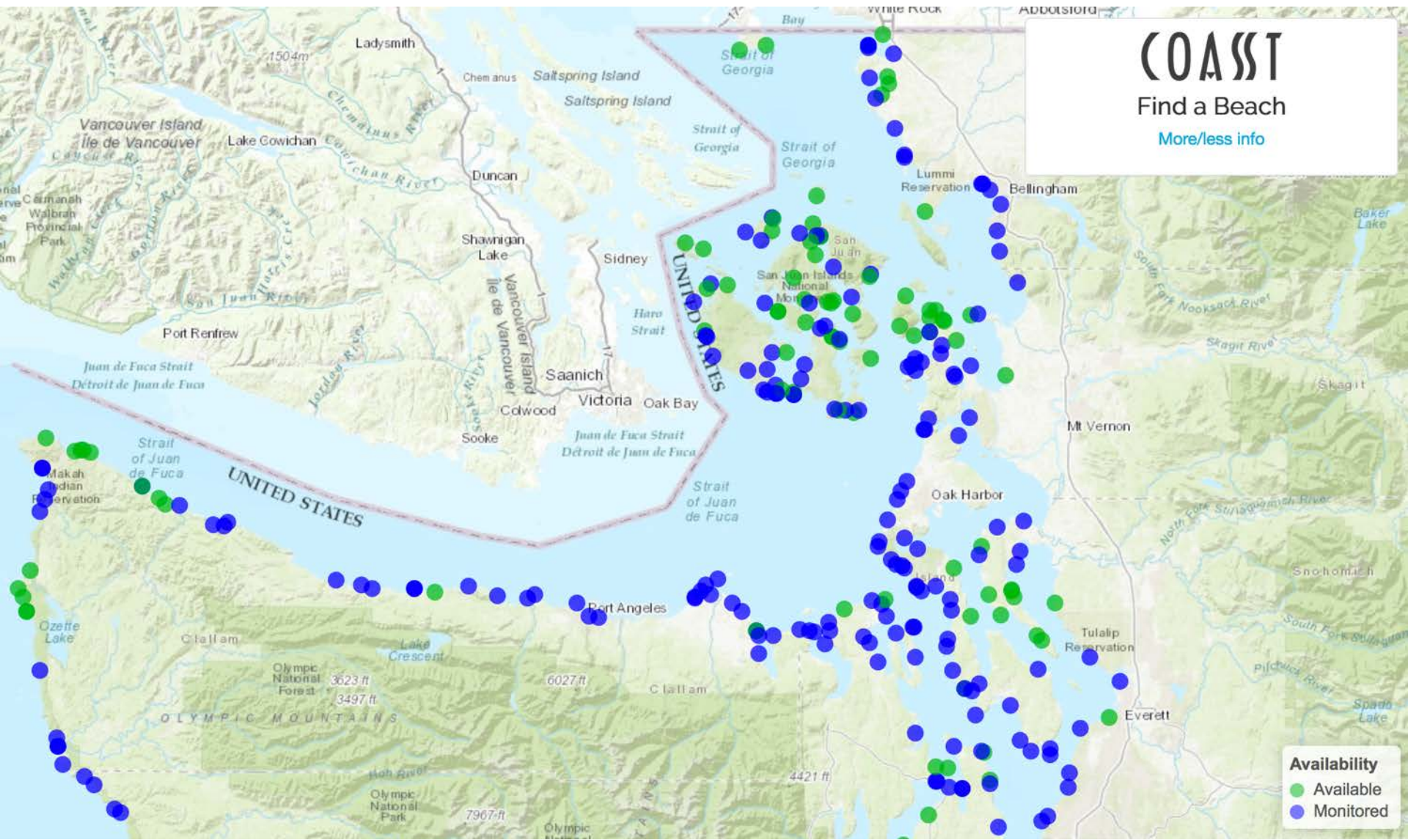
as of Nov 2019



COAST

Find a Beach

[More/less info](#)



Availability

- Available
- Monitored

Who is COASST? *(in the office)*



Julia Parrish
*Executive
Director*



Hillary Burgess
*Science
Coordinator*



Jackie Lindsey
*Volunteer
Coordinator*



Yurong He
*Post-Doctoral
Researcher*



Tim Jones
*Post-Doctoral
Researcher*



Charlie Wright
Data Verifier



Jazzmine Allen
Graduate Student



~15 Student Interns

COASST Science Team



Mainstream Science Team

Mark Hipfner



Parker MacCready



Nick Bond



Kris Bovy

Pamela Lestenkof



Kirsten Lindquist



Lisa Ballance



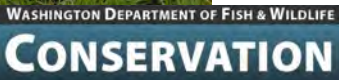
Lauren Divine



Jan Roletto

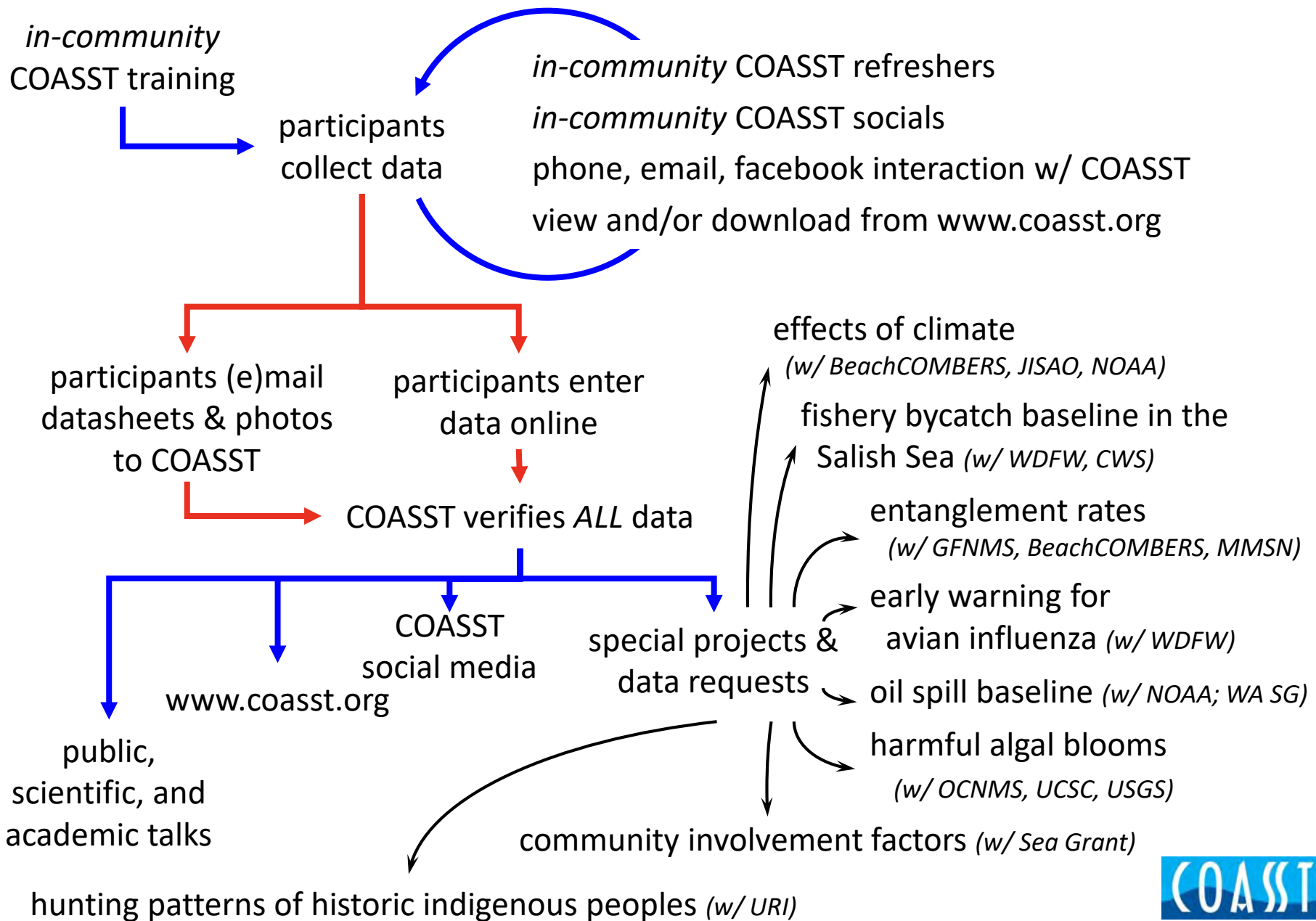


Eric Bjorkstedt



Scott Pearson

How Does COASST Work?



COASST Data Have Been Used to Assess:

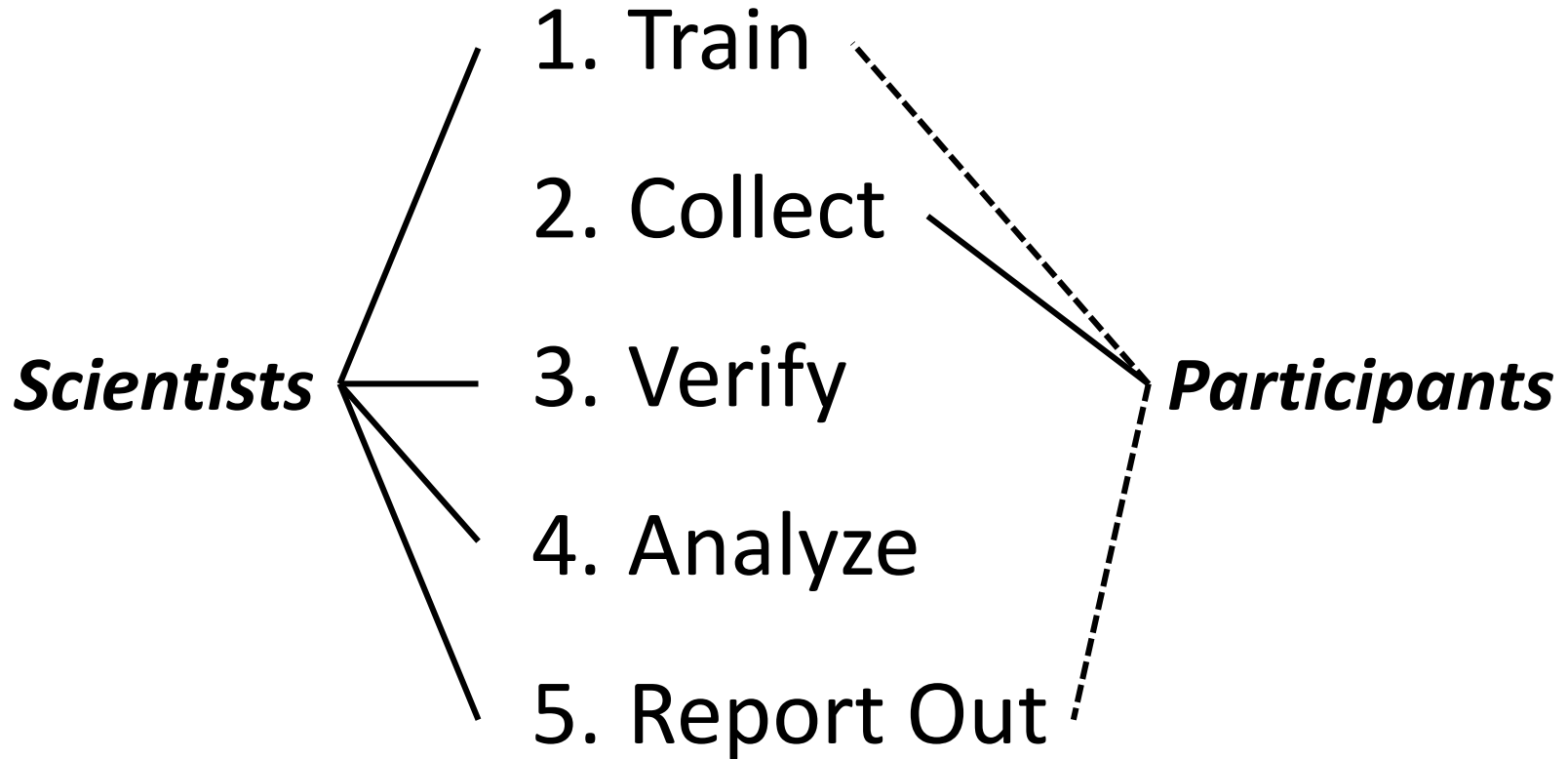
Science

- Fisheries Impacts; Predicting Bycatch
- Impacts of Harmful Algal Blooms
- Shifting Baselines; Chronic Change
- Indigenous Use of Seabird Resources
- Climate Impacts

Resource Management

- Status of Threatened & Endangered Species
- Avian Influenza; Disease
- Hunting Limits
- Indicators:
 - *California Current Integrated Ecosystem Assessment*
 - *Alaska Ocean Observing System*
 - *North Pacific Fishery Management Council*

Rigorous Citizen Science



—— primary job

----- secondary job

COASST Social Networks!

