



## **SNOHOMISH COUNTY MARINE RESOURCES ADVISORY COMMITTEE**



## **2007 ANNUAL REPORT & RECOMMENDATIONS**

# **Snohomish County Marine Resources Advisory Committee (MRC)**

---

## **Background**

The Snohomish County Marine Resource Advisory Committee (MRC) was established in 1999 to advise Snohomish County on approaches to conserve the local marine environment. The MRC is authorized by Chapter 2.800 of the Snohomish County Code to advise the County Council and Executive on marine resource issues. This report outlines the MRC's accomplishments for the period of March 2006 – August 2007, and includes a description of current projects and recommendations for the Snohomish County Executive and Council.

The MRC is composed of eleven citizen members representing economic, recreational, conservation, and environmental interests along with local and tribal governments. The MRC participates in the Northwest Straits Marine Conservation Initiative, a non-partisan regional effort to protect and restore marine resources in northern Puget Sound and the Strait of Juan de Fuca. Staff support for the Snohomish County MRC is provided by the Surface Water Management Division of the Public Works Department.

Since its inception, the MRC has developed an effective citizen-based process for examining local marine resource issues, engaging and

educating the public and initiating small-scale efforts to address established priorities. Additionally, the MRC has developed a wide variety of partnerships with agencies, non-profit organizations and citizen groups to share resources and improve our chances for long-term success. Public education and involvement, including the training and use of volunteers, is an integral part of the MRC's work. Without the help of volunteers, the MRC would not be able to successfully complete many of its important projects.

The MRC's initial efforts have provided a strong foundation of tools and knowledge to fulfill their mission. With a strong emphasis on accountability, the MRC strives to maximize results, build stakeholder confidence and leverage external funds and partnerships.

The MRC is now implementing a number of marine conservation outreach, research and on-the-ground projects focused to leverage funds and expand partnerships throughout the county. The MRC is proud of its accomplishments over the past year, and looks forward to continuing its efforts to benefit the marine resources and the citizens of Snohomish County in 2008.



*Above: MRC Members*

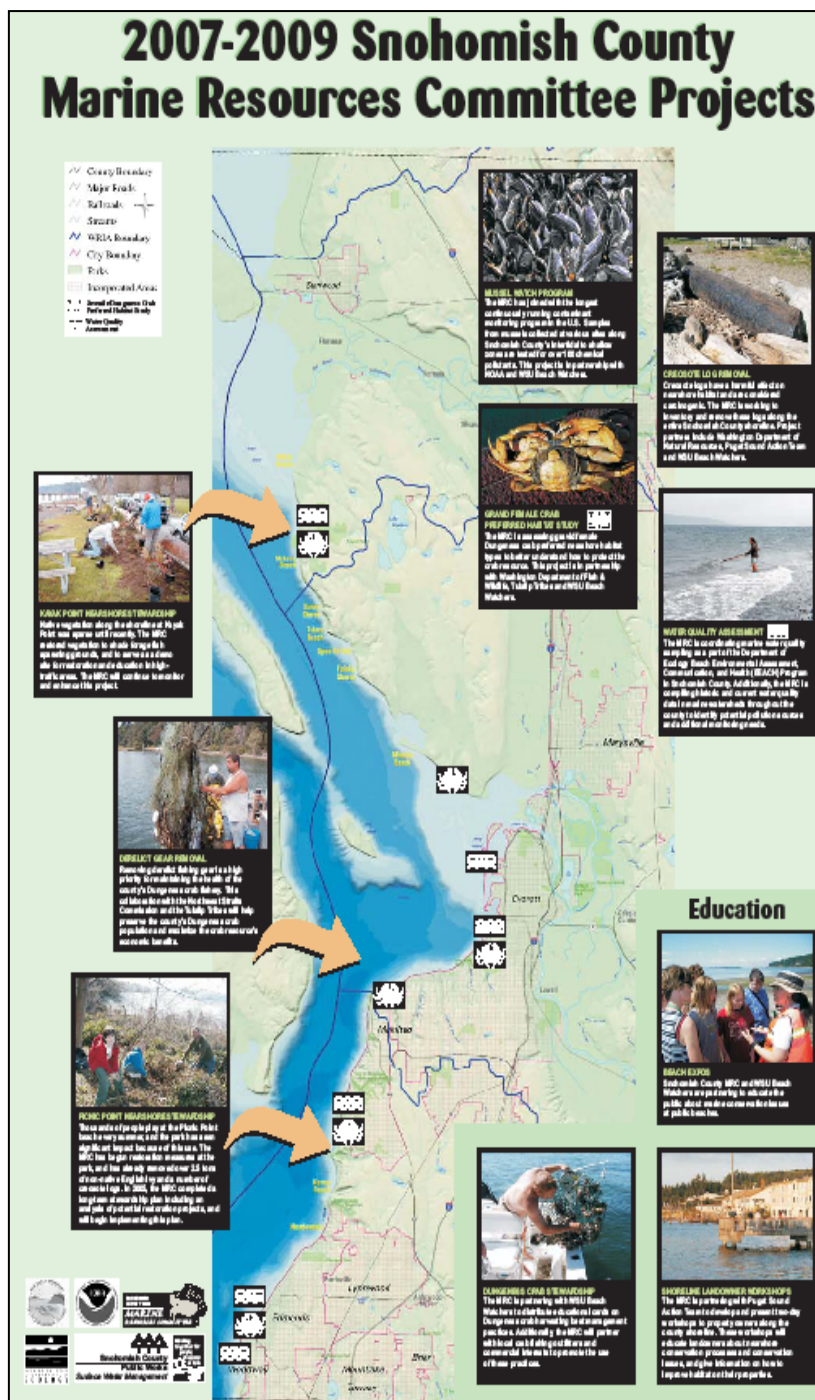
# Work Plan 2007-2009

The MRC prepared a two year Work Plan for the period between July 2007 and June 2009. This Work Plan defines strategic goals and projects to achieve on-the-ground results in five priority areas:

- **Public Education, Outreach, and Community Empowerment**
- **Dungeness Crab Stewardship**
- **Nearshore Habitat Protection**
- **Marine Water Quality**

The targeted priorities are supported by subcommittees appointed by the MRC to increase public awareness, improve the best available marine science in Snohomish County, make recommendations, and implement successful on-the-ground restoration, monitoring, and protection projects. This Work Plan will improve the MRC's effectiveness and ability to make science-based recommendations to the County Executive and Council.

Highlights of the MRC's 2006-2007 achievements are summarized in this report. In addition, highlighted projects in the 2007-2009 Work Plan are also included. The 2007-2009 Work Plan & Funding Source Summary Chart is included in the Attachments section.



Above: Snohomish County Marine Resources Committee's poster highlighting MRC projects anticipated for 2007-2009



# Public Education and Outreach

## 2006-2007 Accomplishments

- **Volunteer Work Groups-** Organized Day of Caring, Jetty Island Clean-up. Over 230 volunteers logged a total of 900 hours for removing invasive plants, picking up litter, and surveying creosote logs. Partners: Northwest Straits commission, Washington Department of Natural Resources, WSU Beach Watchers, US Navy, Port of Everett, Stilly-Snohomish Fishery Enhancement Task Force, United Way, People for Puget Sound, and Snohomish Conservation District.
- **Publicity-** Generated publicity regarding the Jetty Island Day of Caring including an article in the Everett Herald and a 2-minute news story on KIRO 7 TV.
- **Beach Expos-** Conducted Beach Expos with guided beach walks at Kayak Point, Mukilteo, Hat Island and Howarth Park.
- **Shoreline Landowner Workshops-** Hosted five, day-long landowner workshops for over 270 shoreline residents throughout Snohomish County to improve stewardship.
- **Dungeness Crab Escape Cord Outreach-** Spoke with over 1200 recreational crabbers at Snohomish County boat ramps about using escape cord on crab traps to minimize loss of harvestable crab if pots become lost.
- **Educational Booths-** Participated in the Stillaguamish Festival of the River in August 2006.
- **Presentations-** Provided marine resource presentations to interested groups.



Above: Beach Watchers distribute escape cord education materials



Above: MRC display at a Beach Expo

## 2007-2009 Work Plan Highlights

### 1. Shoreline Landowner Workshops

The MRC will continue to provide workshops at various locations in Snohomish County to educate shoreline landowners on marine ecology, bluff stabilization, native vegetation, healthy lawn practices and zoning requirements to improve stewardship of Puget Sound. Partners for this project include: Puget Sound Partnership (formerly Puget Sound Action Team), WSU Beach Watchers, People For Puget Sound, City of Everett, City of Mukilteo, City of Edmonds,

Right: Participants at shoreline landowner workshop



Stillaguamish Tribe, and others.

### 2. Dungeness Crab Escape Cord Outreach

Snohomish County MRC and WSU Beach Watchers will continue to work in partnership to increase recreational crabbers' use of biodegradable escape cords in Snohomish County. Escape cord is a cotton cord that will disintegrate over time and allow captured crabs to escape from a lost trap.

Right: Biodegradable cotton escape cord



# Dungeness Crab Stewardship

## 2006-2007 Accomplishments

- **Juvenile Dungeness Crab Habitat Survey-** Cooperated with Washington State Department of Fish & Wildlife (WDFW), Tulalip Tribes, and WSU Beach Watchers to survey juvenile Dungeness crab habitat. Volunteers logged over 1700 hours counting crabs. Data will be used by WDFW to protect juvenile crab habitat in hydraulic permits by documenting Priority & Habitat Species. Presented the final report at the Georgia Basin Puget Conference.
- **Derelict Fishing Gear Survey-** Coordinated with the Northwest Straits Commission & Stillaguamish Tribe to survey for additional derelict fishing gear in Port Gardner.
- **Crab Harvest Data Collection-** Compiled WDFW crab harvest data to determine trends in harvest rates among user groups.
- **Degradation Rates of Escape Cord Materials-** Partnered with WDFW and the Port Townsend Marine Science Center to determine degradation rates of escape cord materials.



*Above: Volunteers survey for juvenile Dungeness crab*



*Above: A crab pot from the degradation rate study*

## 2007-2009 Work Plan Highlights

1. **Gravid Female Dungeness Crab Habitat Survey-** This study will identify gravid female crab habitat areas in Snohomish County. Collected data will be analyzed and used to promote appropriate means of protection for productive gravid female crab habitat. The study protocols and preliminary maps were completed June 2007, and field mapping is anticipated for completion by February 2008.



*Left: Gravid female Dungeness crab holding up to 2.5 million fertilized eggs*

2. **Derelict Gear Removal Project-** In 2006, MRC coordinated efforts with the Northwest Straits

Commission to survey and remove derelict fishing gear in Port Gardner. With additional grant funds, the MRC will continue to work with the Northwest Straits Commission to expand the inventory of derelict gear and locate traps in 100-250 foot depths from Mukilteo to Tulalip Bay.

*Right: Approximately 10,000 crabs are lost each year in Port Gardner due to derelict gear*



3. **Crab Harvest Data Collection-** Continue coordinating with WDFW in collecting crab harvest data to determine trends in harvest rates among user groups.

# Nearshore Habitat Protection & Restoration

## 2006-2007 Accomplishments

- **Creosote Identification Training-** Trained WSU Beach Watchers in creosote identification to survey Snohomish County.
- **Jetty Island Clean Up-** WSU Beach Watchers removed invasive vegetation and tagged over 70 tons of creosote treated logs on Jetty Island. Washington Department of Natural Resources removed them by helicopter the following week.
- **Eelgrass Mapping and Protection–** Eelgrass communities provide valuable habitat for many marine species along the shoreline. Washington State has lost an estimated 33% of its eelgrass beds. The MRC mapped eelgrass habitat along the County marine shoreline, and distributed this information to Snohomish County Planning & Development Services to include in the Shoreline Management Program.



*Left:  
Volunteers  
survey  
creosote logs  
on Jetty Island*



*Right:  
Helicopter  
removing 70  
tons of creosote  
from Jetty Island*

## 2007-2009 Work Plan Highlights

1. **Jetty Island Expansion Project-** Approximately 60,000 cubic yards of hydraulically clean river sand was placed to extend the existing island southward approximately 900 feet. The MRC is partnering with the Port of Everett to evaluate the effectiveness of using dredged river sand to restore shoreline functions on hardened shorelines and for nourishment of small stream deltas in Puget Sound. Five surveys are planned between fall 2007 and spring 2009.
2. **Kayak Point Restoration-** This project is in partnership with Snohomish County Parks & Recreation to relocate the loop road and restore backshore habitat and sediment transport processes. In addition, this project will assess emerging threats from an existing bulkhead and develop a feasibility and design study for a “soft” armoring design intended to enhance long-term ecosystem function while protecting existing park infrastructure. Other project partners include People For Puget Sound, Northwest Straits Foundation, WSU Beach Watchers, and many others.
3. **Port Susan Marine Stewardship Area-** The Port Susan Marine Stewardship Area Working Group includes the Northwest Straits Commission, Tulalip Tribes, Stillaguamish Tribe, the Snohomish and Island County Marine Resource Committees and others. The Working Group is scoping the feasibility of establishing a Marine Stewardship Area in Port Susan, focused on improving sustainable fisheries practices, bolstering nearshore habitat restoration & protection efforts, and coordinating effective public outreach for Port Susan landowners. The Working Group plans to create a coordinated communication network among Tribes, conservation groups, stakeholders, and government agencies to obtain on-the-ground results that benefit Port Susan’s marine resources.
4. **Creosote Piling Removal and Osprey Nest Relocation-** Port Gardner holds claim to the largest osprey nest colony on the west coast, and brings birdwatchers world-wide. Many osprey nests are on timber pilings treated with creosote. These pilings are in a state of slow collapse. The MRC is partnering with Washington State’s Department of Natural Resource’s (DNR), Pilchuck Audubon Society and Tulalip Tribes to remove creosote pilings in Port Gardner and replace osprey nests on creosote pilings with nests on concrete pilings. The MRC is coordinating creosote piling removal and will provide funding for the placement of one replacement concrete piling for the osprey nests. The insertion of four other pilings will be funded by project partners.



# Marine Water Quality

## 2006-2007 Accomplishments

- **Water Quality Monitoring** - Participated in Washington Department of Ecology B.E.A.C.H. Program to monitor water quality at public beaches along the Snohomish County marine shoreline.
- **Water Quality Data Compilation**-Initiated synthesis investigation and collection of data on human and wildlife health issues associated with marine water quality. Compiled and evaluated data from existing marine water quality monitoring programs throughout Snohomish County programs to assess local marine water quality conditions. In addition, the information will be used to identify data gaps and to identify the next steps to improve marine water quality in Snohomish County.



*Above: Participant of the Washington Department of Ecology's B.E.A.C.H. Program at Picnic Point Park*

## 2007-2009 Work Plan Highlights

### 1. Snohomish County Mussel Watch

The MRC is expanding NOAA's nationwide water quality Mussel Watch Program from three to six sites in Snohomish County. Mussels are collected, processed and analyzed for more than 100 chemicals including PCBs, PAHs, trace metals, and others. The purpose of this project is to obtain information on the relative concentrations of chemical contaminants in nearshore waters of Snohomish County. The MRC anticipates continuing this long-term monitoring program to identify trends over time. Partners for this project include NOAA, the Stillaguamish Tribe, the MRC, and WSU Beach Watchers.

*Right: Mussel Watch Training at Mukilteo Lighthouse Park*



### 2. Pharmaceutical Take Back Education and Research

There is a growing concern throughout the country with little known about the harmful impacts of pharmaceuticals on freshwater and marine ecosystems. Wastewater treatment facilities and septic systems do not remove most pharmaceuticals when flushed. Pharmaceuticals in landfills can contaminate groundwater. The MRC is partnering

with the Washington PH:ARM (Pharmaceuticals from Households: A Return Mechanism) to implement a first-in-the-nation pilot take-back program aimed to decrease the threat of pharmaceutical contamination, safeguard public health and create sustainable approaches to problematic waste streams. PH:ARM partners are working to create a simple, low-cost and secure take-back system to collect unwanted medications from household and small quantity sources on an on-going basis. MRC funding will be used to identify stakeholders, provide educational workshops, and to widely disseminate information. The project has broad support from a diverse coalition of government and non-profit representatives.

### 3. Monitoring Endocrine Disruptors in Adult Male Chinook Salmon

Endocrine disruptors are chemicals that disrupt cellular development and reproduction. The Stillaguamish Hatchery staff has noticed a number of sterile adult male Chinook salmon. This project will determine if male Stillaguamish hatchery and wild Chinook have elevated levels of endocrine disruptors in their blood.

### 4. Water Quality Data Compilation

The MRC will continue compiling existing water quality data from various agencies throughout Snohomish County. The data will be used to assess local marine water quality conditions and identify water quality data gaps and trends to obtain a county-wide perspective on water quality.

# Financial Summary

---

MRC activities are funded in large part by non-competitive grants from the Northwest Straits Commission and by Snohomish County General Funds. The source of the NWSC grants is Coastal Zone Management 310 funds administered by the Washington Department of Ecology, and have varied from \$40,000-\$100,000 annually since 2001, with an average of approximately \$60,000 per year.

Since inception in 1999, Snohomish County has received over \$750,000 in support from the Northwest Straits Commission to contribute to the MRC's Work Plans.

The County's share of MRC funding is critical to ensure the fulfillment of the Work Plan. Between 1999-2006, the County invested \$189,000 in the Marine Resources Program, averaging about \$31,500 per year. By 2006, County funds had been leveraged at a ratio of about 1:4 with external support from grants, gifts and in-kind support from MRC partners.

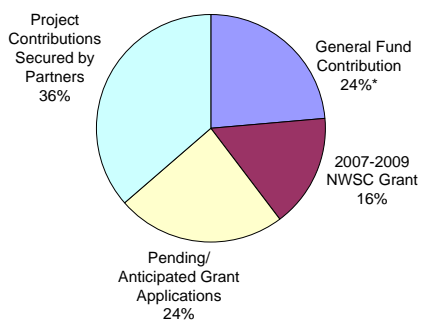
Snohomish County increased its General Fund contribution to the Marine Resources Program to \$135,000 for FY2007. These additional funds have resulted in a strengthened work program, expanded partnerships, increased volunteer participation, and larger on-the-ground projects *while maintaining a 4:1 ratio of leveraged funds.*

Since January 2007, The MRC received another 2-year grant award from NWSC for \$184,000, and has secured \$374,000 in partnership pledges to support the work plan. Additionally, the MRC and partners have applied for \$273,000 in additional grant funds. Results of these additional grant applications are pending. The MRC and its partners are continuing to apply for upcoming grants and other community-based funding sources to maximize leverage of County resources (see *Attachment 1* for budget details).

***These actions have only been possible due to the recent increase in County General Fund contributions. Many of the MRC's projects in its heightened work plan cannot be implemented without continued investment at existing levels.***

Existing funding levels will ensure that the MRC's efforts will reach a level with measurable improvements in on-the-ground stewardship and restoration. Currently, MRC staff support is at 1.25 FTE, plus two 6-month temporary positions. The Marine Resources Program has further leveraged its staffing capacity through a recent award from the Department of Ecology Washington Conservation Corps. An Individual Placement position will support the program for 12 months, with anticipated support in future years. This staffing level supports administrative functions, committee operations and coordinates actions to implement the MRC Work Plan and recommendations.

**2007-2009 MRC Work Plan Contributions**



\* Projected at comment levels, pending Executive Council approvals.



# Recommendations to Snohomish County Executive & Council

---

The following recommendations are presented for consideration by the Snohomish County Council and Executive. These include actions that Council and/or the Executive could take, in addition to general support of the current MRC work program. The MRC welcomes further discussion of these recommendations.

## **Primary Recommendations**

1. Continue current level of General Fund investment in the MRC, which is critical to the programs' success.
2. Provide continued staff support for the MRC.
3. Endorse the MRC's role in the Port Susan Marine Stewardship Area (MSA) Working Group, which will identify goals and actions involved in establishing a community-supported MSA that results in policy actions and on-the-ground activities.
4. Prioritize marine resource stewardship in departmental work plans, budget development, and local and regional initiatives, such as transportation and economic development.
5. Adopt the Snohomish County Shoreline Management Program.
6. Ensure that marine shoreline development projects in Snohomish County are coordinated with respect to mitigation of comprehensive and cumulative effects on our shoreline and marine resources.
7. Support partner and agency efforts to protect and restore marine shoreline habitat.

## **Additional Recommendations**

### **Public Involvement and Education**

1. Encourage citizen involvement in marine resource monitoring and protection opportunities.
2. Expand partnerships with agencies, tribes, municipalities, universities, community colleges, non-profit organizations and citizen groups.

### **Dungeness Crab Stewardship**

1. Expand partnerships with agencies, tribes, municipalities, universities, community colleges, non-profit organizations and citizen groups to

protect and restore Dungeness crab habitat and develop appropriate harvest regulations.

2. Support statewide development of a Priority Habitat & Species designation for Dungeness crab habitat

### **Nearshore Habitat Protection and Restoration**

1. Support partnerships targeted to protect and restore marine shoreline habitat.
2. Design and implement nearshore habitat restoration capital projects, especially soft shore protection demonstration projects.
3. Support efforts to address the impact of climate change and anticipated sea level rise on marine resources, in addition to landowners living along the marine shoreline.

### **Marine Water Quality**

1. Examine the threat of oil spills to Snohomish County marine resources.
2. Monitor the development of Washington's administrative rules that will implement new legislation for on-water fuel spill prevention.

### **Regional Puget Sound Conservation Efforts**

1. Participate in the Puget Sound Partnership's Ecosystem Coordination Board and serve a leadership role in the Whidbey Island Action Area to improve Puget Sound's health and enhance Snohomish County citizens' quality of life.



# Acknowledgements

---

The accomplishments and current activities of the Snohomish County MRC depend on contributions from volunteers, Snohomish County staff members, and people from other organizations. Many of our MRC partners are listed below. Their interest and participation in MRC activities is greatly appreciated. We apologize for any omissions.

## Snohomish County MRC Members

Mary Cunningham, MRC Chair, City of Everett Planning and Community Development, Senior Planner  
Dawn Lawrence, MRC Vice Chair, Cascade High School, Biology Teacher  
Kirby Johnson, NWSC Representative, Boeing Engineer  
Jen Sevigny, Stillaguamish Tribe, Wildlife Biologist (Alternate: Francesca Perez, Conservation Biologist and Outreach Coordinator)  
Heather McCartney, City of Mukilteo, Planning Director  
Alan Mearns, Ph.D., National Oceanic and Atmospheric Administration, Marine Biologist

Chet Motekaitis, Recreational Boat Safety Consultant  
Sally van Niel, Conservation Co-Chair, Pilchuck Audubon Society  
Daryl Williams, Tulalip Tribes Environmental Liaison  
Kent Scudder, Norquest, Ltd., Real Estate Analyst  
Charlie LaNasa, Bestworth-Rommel, Manager  
Karen Stewart, Senior Planner, Snohomish County PDS, Ex Officio position  
Chrys Bertolotto, WSU Beach Watchers / Snohomish County, Ex Officio position

## WSU Beach Watchers- Snohomish County

Anne Uhl  
Becky Spiker  
Bernie Bush  
Beverly Odland  
Billy Johnsen  
Bob McCort  
Carol Forsberg  
Caroline Tarpley  
Chris Betchley  
Chris Mitchell  
Cindy Ridgeway

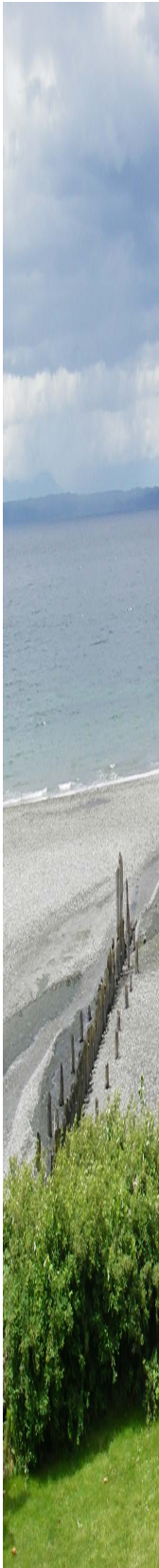
David Normal  
David Reidway  
Denise Mannery  
Fred Benedetti  
GayLynn Beighton  
Harlen Forsberg  
Jacquelyn Styrna  
Judy Ness  
Kathe Stanness  
Kristie Marnz  
Lynn McCort

Maureen Hoban  
Tom Hoban  
Michelle Noval  
Nancy McDonald  
Ralph Porter  
Stef Frenzl  
Susan Dearn-Tarpley  
Theda Houck  
Wendy Fisher  
Yoshi Shelton

## Port Susan Marine Stewardship Area Working Group

Chrys Bertolotto, WSU Beach Watchers  
Ginny Broadhurst, Northwest Straits Commission  
Scott Chase, WSU Shore Stewards  
Stef Frenzl, Snohomish County MRC  
Phyllis Kind, Island County MRC  
Mary Cunningham, Snohomish County MRC

Kit Rawson, Tulalip Tribes  
Jen Sevigny, Stillaguamish Tribe  
Robert Warren, The Nature Conservancy  
Tim Walls, Snohomish Basin Salmon Recovery Forum  
Terry Williams, Tulalip Tribes  
Daryl Williams, Tulalip Tribes



## **Public Involvement and Education**

WSU Beach Watchers- Snohomish County  
Scott Chase, Camano Island Beach  
Watchers  
Michele Boyd, Westgate Elementary,  
Edmonds School District  
Owen Caddy, City of Edmonds Beach  
Rangers  
David Duggins, UW Friday Harbor  
Research Labs  
Kraig Hansen, City of Everett Parks  
Department  
Nancy Hasler, Totem Falls Elementary,  
Snohomish School District

Sally Lider, City of Edmonds Beach  
Rangers  
Linda Lyshall, Puget Sound Action Team  
Cynthia McIntyre, Everett High School  
Curt Moulton, Snohomish County/WSU  
Extension  
Kirby Schaufler, Cedarcrest Middle  
School, Marysville School District  
Ann Boyce, Stillaguamish-Snohomish  
Fisheries Enhancement Task Force  
Keeley O'Connell, People For Puget  
Sound  
Francesca Perez, Stillaguamish Tribe  
Maria Calvi, Tulalip Tribes

## **Dungeness Crab Stewardship**

All 72 Juvenile Dungeness crab survey  
volunteers  
Tom Murphy, Edmonds Community College  
and the LEAF Program  
Escape Cord Education Volunteers  
Tom Cowan, Northwest Straits Foundation  
Hilary Culverwell, Puget Sound Action  
Team  
Paul Dinnel, Skagit MRC/Shannon Point  
Marine Center

Jennifer Hernandez, University of  
Washington  
Bruce Higgins, Edmonds Underwater  
Park  
Jeff June, Natural Resources Consultants  
Mike McHugh, Tulalip Tribes  
David Meister, WDFW  
Don Velasquez, WDFW

## **Nearshore Habitat Protection and Restoration**

All 23 Snohomish Camano Nearshore  
Cooperative Members  
Naval Station Everett Jetty Island  
Volunteers  
United Way Day of Caring Volunteers  
Graham Anderson, Port of Everett  
Amrita Candela-Beal, Naval Station Everett  
Rick Dinicola, US Geological Survey  
Tracy Fuentes, US Geological Survey  
Doug Meyers, Puget Sound Action Team  
Hugh Shipman, Washington Department of  
Ecology

Les Hastings, Naval Station Everett  
Jerry Heller, Port of Everett  
Jon Houghton, Pentec Environmental  
Tarang Khangaonkar, Pacific Northwest  
National Laboratory/Battelle  
Lisa Kaufman, Department of Natural  
Resources  
Reg Reisenbichler, US Geological Survey  
David Roberts, Department of Natural  
Resources  
Todd Zackey, Tulalip Tribes  
Maria Calvi, Tulalip Tribes

## **Marine Water Quality**

WSU Beach Watchers  
Kathryn Davis  
Lynn Schneider, WA Department of  
Health/Ecology

Ginny Broadhurst, Northwest Straits  
Commission  
Karen Peck, NOAA





## Data Compilation and Analysis

Snohomish Camano Nearshore  
Cooperative Members  
Snohomish Basin Salmon Recovery Forum  
Allison Bailey, Sound GIS  
Betty Bookheim, Washington Department of  
Natural Resources  
Duane Bowman, City of Edmonds  
Paul Crane, City of Everett  
Cinde Donoghue, Washington Department  
of Ecology  
Dennis Gregoire, Port of Everett  
Jason Griffith, Stillaguamish Tribe  
Jon Houghton, Pentec Environmental  
Dan Mathias, City of Everett  
Peter Namtvedt Best, City of Bainbridge  
Island

Jim Norris, Marine Resources Consultants  
Tony Petrillo, Blue Water Engineering  
Services  
Dan Penttila, Washington Department of  
Fish and Wildlife  
Allison Reak, Landau Associates  
Darren Syverson, Survey Volunteer  
Paul Szewczykowski, Survey Volunteer  
Curtis Tanner, U.S. Fish and Wildlife  
Service  
Chris Townsend, Sound Transit  
Jacques White, The Nature Conservancy  
Gary Wood, Island County MRC/Regional  
Forage Fish Coordinator  
Todd Zackey, Tulalip Tribes

## Snohomish County Staff Members

---

### Public Works Department, Surface Water Management Division

---

Bob Aldrich, Principal Watershed Steward  
Laura Audette, GIS Analyst  
Chris Betchley, Associate Planner  
Suzy Brunzell, GIS Analyst  
Sean Edwards, Senior Planner  
Wendy Fisher, Marine Resources Intern  
Stef Frenzl, MRC Lead Staff  
Jacquie Gauthier, WCC IP  
Jake Jacobson, Watershed Steward  
Karen Kerwin, Interim Director  
Scott Moore, Native Plant Steward

Morgan Neal, Marine Resources Intern  
Ted Parker, Habitat Technician  
Tracy Patton, Associate Planner  
Lynda Ransley, SPA Supervisor  
Robyn Redekopp, Intern  
Suzi Wong Swint, Senior Planner  
Tim Walls, Associate Planner  
Dave Ward, Principal Steward  
Lily Wescott, Associate Planner

---

### Department of Parks and Recreation

---

Ken Alskog, M&O Supervisor  
Jack Davidson, Senior Park Ranger  
Doug Dailer, Park Ranger  
Pat Kenyon, Principal Park Planner

Dale Kolbe, Habitat Steward  
Marc Krandel, Planning Supervisor  
Sharon Walker, Senior Planner  
James Yap, Senior Planner

---

### Snohomish County Executive

---

Aaron G. Reardon

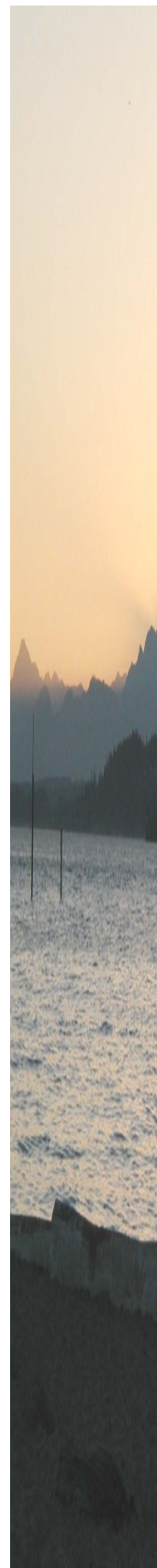
---

### Snohomish County Council

---

John Koster- District 1  
Kirke Sievers- District 2  
Gary Nelson- District 3

Dave Gossett, Chair- District 4  
Dave Somers, Vice Chair- District 5



## **Attachments**

**Attachment A..... 2007-2009 MRC Work Plan  
& Funding Source Summary**

<b><u>Attachment A</u></b>  <b>Snohomish County MRC 2-Year Work Plan &amp; Funding Source Summary</b>	<b>Snohomish County MRC Budget</b>				<b>Project Contributions Secured by Partners</b>	<b>Total Project Cost</b>
	<b>Anticipated 2-Year General Fund Contribution</b>	<b>2007-2009 NWSC Grant</b>	<b>Pending/ Anticipated Grant Applications</b>	<b>Total MRC Program Budget</b>		
<b>MRC Administration</b> NWSC Grant Admin Requirements (meetings, work plan, annual reports, etc) MRC Program Fundraising MRC Conferences Strategic Plan	<b>\$64,500</b>	<b>\$30,000</b>	<b>\$0</b>	<b>\$94,500</b>	<b>\$0</b>	<b>\$94,500</b>
<b>Dungeness Crab Program</b> Derelict Gear Removal/Strategy Gravid Female Habitat Map- Part II Escape Cord Education- Recreational Crab Harvest Regulation Packet to WDFW	<b>\$18,000</b>	<b>\$73,000</b>	<b>\$0</b>	<b>\$91,000</b>	<b>\$6,000</b>	<b>\$97,000</b>
<b>Nearshore Stewardship Program</b> Kayak Point County Park Restoration Candidate Sites Analysis Snohomish County Shore Stewards Landowner Wrkshps/Tech Assistance Picnic/Kayak Stwrship- Sound Stewards Jetty Island Beach Expansion Monitoring Osprey Nest Relocation Project Port Susan Marine Stewardship Area	<b>\$112,000</b>	<b>\$18,000</b>	<b>\$243,000</b>	<b>\$373,000</b>	<b>\$224,000</b>	<b>\$597,000</b>
<b>Water Quality</b> Ph:arm Take Back Program Mussel Watch Water Quality Program Monitor Endocrine Disruptors in salmon Creosote Piling Removal Water Quality Investigation	<b>\$42,500</b>	<b>\$43,000</b>	<b>\$30,000</b>	<b>\$115,500</b>	<b>\$64,000</b>	<b>\$179,500</b>
<b>Community Empowerment</b> WSU Beach Watchers Program	<b>\$33,000</b>	<b>\$20,000</b>	<b>\$0</b>	<b>\$53,000</b>	<b>\$120,000</b>	<b>\$173,000</b>
	<b>\$270,000</b>	<b>\$184,000</b>	<b>\$273,000</b>	<b>\$727,000</b>	<b>\$414,000</b>	<b>\$1,141,000</b>