

Voluntary No-Anchor Zones of the Salish Sea

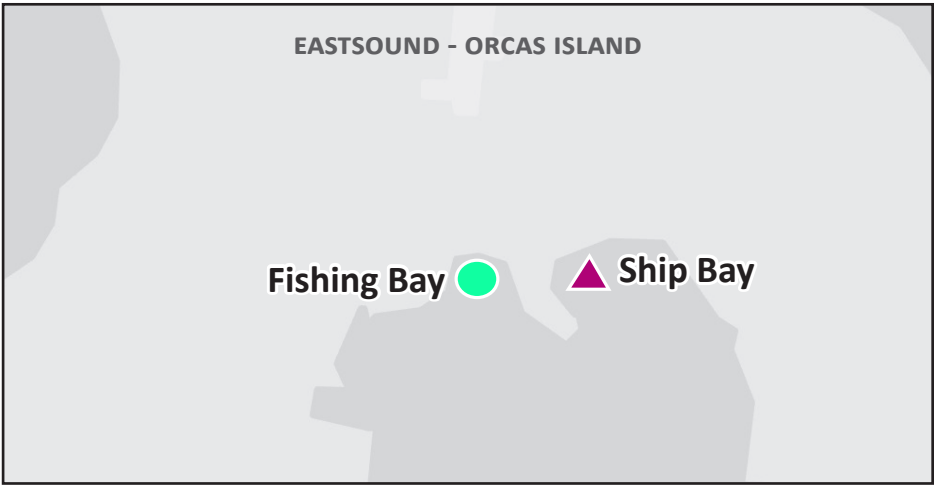
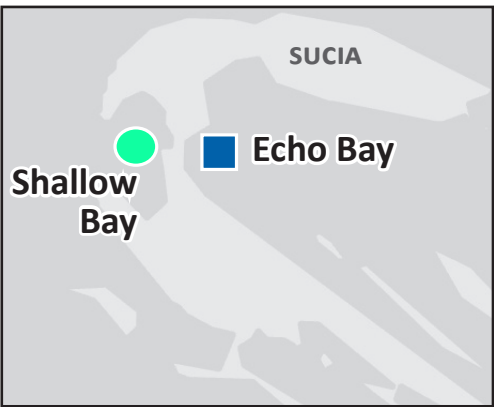
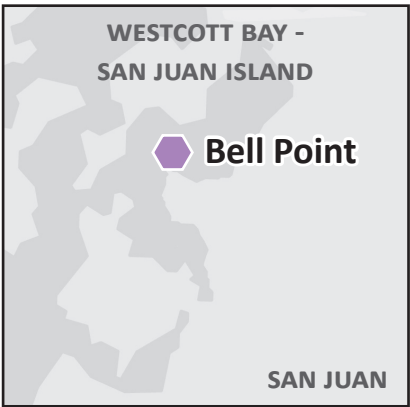
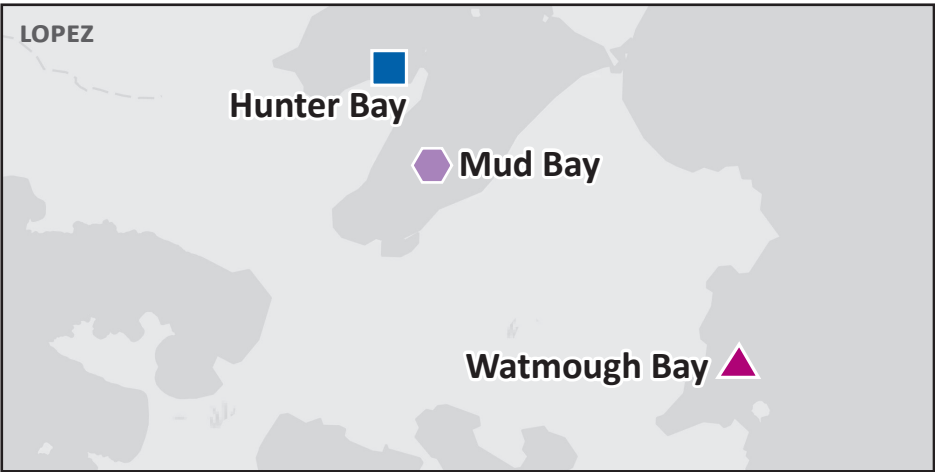
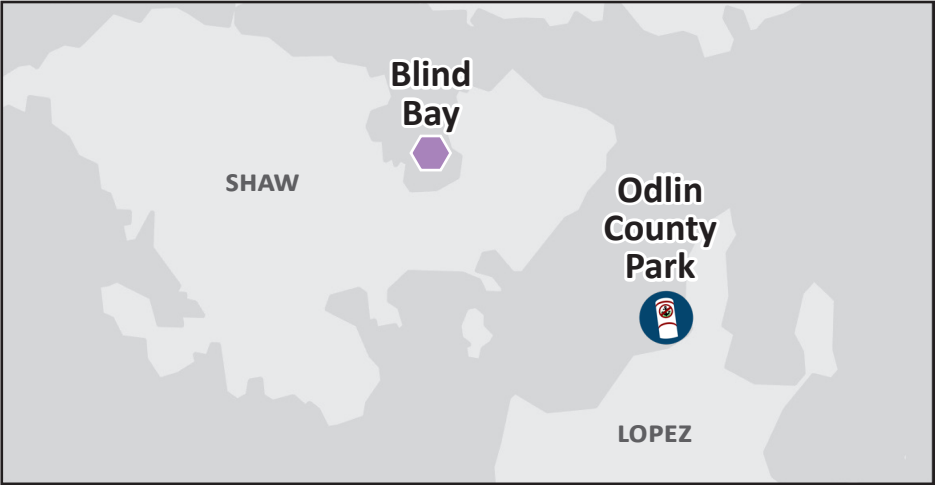
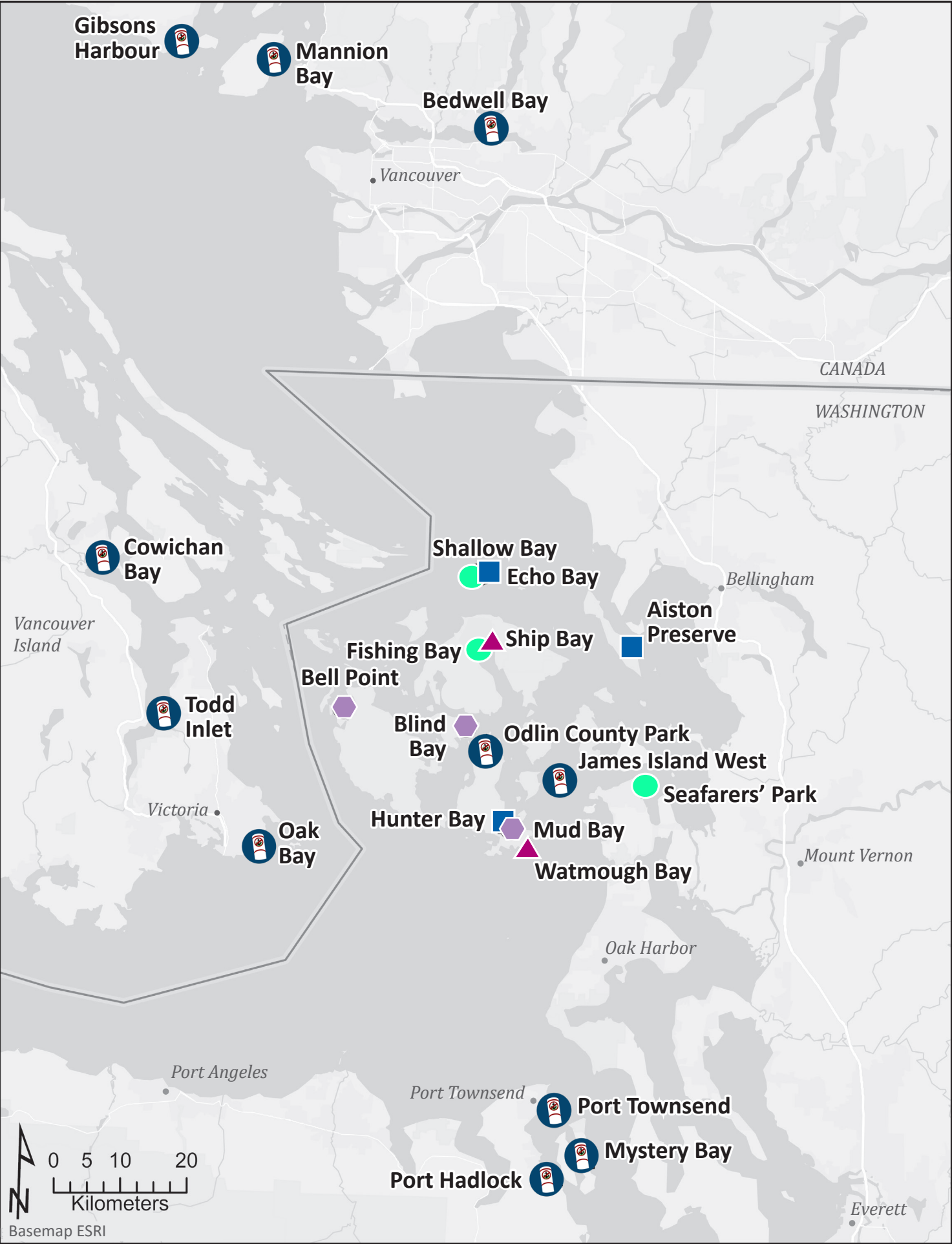
Anchor Out Depth (Virtual)

- 10 feet (3 m)
- 15 feet (4.5 m)
- 20 feet (6 m)
- 25 feet (8 m)

Colored symbols indicate depth to anchor out of eelgrass habitat for the **virtual voluntary no-anchor zone** (may appear on some navigation devices)

Marker Buoys

Buoy icons indicate where informational buoys mark the deep water edge of eelgrass.



Disclaimer: This map is for awareness of no-anchor zones only, and not intended for navigational use. Voluntary no-anchor zones don't preclude prior authorized uses such as WA DNR permitted mooring buoys or docks.